

Datasheet for ABIN6736387  
**anti-GABRP antibody (AA 28-77)**[Go to Product page](#)

## 2 Images

## Overview

Quantity:	100 µL
Target:	GABRP
Binding Specificity:	AA 28-77
Reactivity:	Mouse, Human, Rat, Dog, Horse, Rabbit, Monkey, Pig
Host:	Rabbit
Clonality:	Polyclonal
Conjugate:	This GABRP antibody is un-conjugated
Application:	Western Blotting (WB), Immunohistochemistry (IHC), Immunohistochemistry (Paraffin-embedded Sections) (IHC (p))

## Product Details

Brand:	IHC-plus™
Immunogen:	Synthetic peptide located between aa28-77 of human GABRP (O00591, NP_055026). Percent identity by BLAST analysis: Human, Chimpanzee, Gorilla, Monkey, Marmoset, Mouse, Rat, Panda, Dog, Rabbit, Horse, Pig (100%), Gibbon, Galago, Elephant, Bovine, Guinea pig (92%), Opossum, Platypus (85%), Turkey (84%).  Type of Immunogen: Synthetic peptide
Specificity:	Human GABRP
Predicted Reactivity:	Percent identity by BLAST analysis: Human, Mouse, Rat, Dog, Rabbit, Horse (100%).
Purification:	Immunoaffinity purified

## Target Details

Target:	GABRP
Alternative Name:	GABRP ( <a href="#">GABRP Products</a> )
Background:	Name/Gene ID: GABRP Subfamily: GABA A receptor Family: Ion Channel  Synonyms: GABRP, GABA(A) receptor, pi, GABA A receptor pi, GABA(A) receptor subunit pi
Gene ID:	2568
NCBI Accession:	<a href="#">NP_055026</a>
UniProt:	<a href="#">O00591</a>

## Application Details

Application Notes:	Approved: IHC, IHC-P (2.5 µg/mL), WB (0.2 - 1 µg/mL)  Usage: Immunohistochemistry: This antibody was validated for use in immunohistochemistry on a panel of 21 formalin-fixed, paraffin-embedded (FFPE) human tissues after heat induced antigen retrieval in pH 6.0 citrate buffer. After incubation with the primary antibody, slides were incubated with biotinylated secondary antibody, followed by alkaline phosphatase-streptavidin and chromogen. The stained slides were evaluated by a pathologist to confirm staining specificity. The optimal working concentration for this antibody was determined to be 2.5 µg/mL.
Comment:	Target Species of Antibody: Human
Restrictions:	For Research Use only

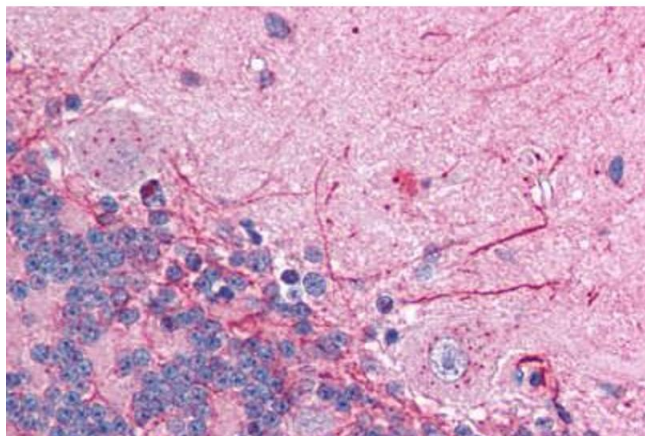
## Handling

Format:	Lyophilized
Reconstitution:	Distilled water
Concentration:	Lot specific
Buffer:	Lyophilized from PBS with 2 % sucrose
Handling Advice:	Avoid repeated freezing and thawing.
Storage:	4 °C, -20 °C

## Handling

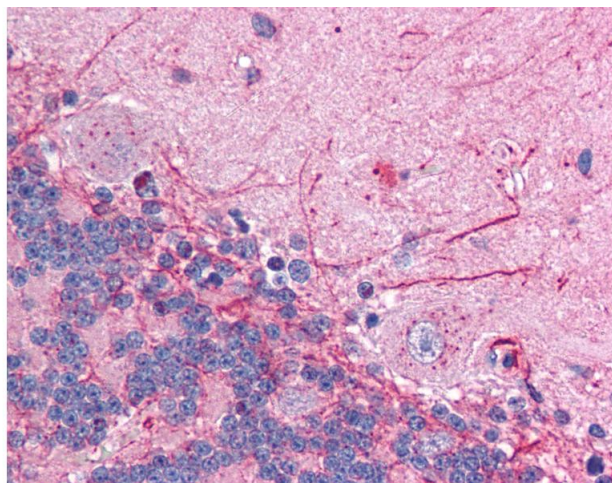
Storage Comment: Short term: 4°C. Long term: Store at -20°C. Avoid freeze-thaw cycles.

## Images



### Immunohistochemistry (Paraffin-embedded Sections)

**Image 1.** Human Brain, Cerebellum (formalin-fixed, paraffin-embedded) stained with GABRP antibody ABIN214761 at 2.5 ug/ml followed by biotinylated goat anti-rabbit IgG secondary antibody ABIN481713, alkaline phosphatase-streptavidin and chromogen.



### Immunohistochemistry

**Image 2.** Anti-GABRP antibody IHC of human brain, cerebellum. Immunohistochemistry of formalin-fixed, paraffin-embedded tissue after heat-induced antigen retrieval. Antibody concentration 5 ug/ml. This image was taken for the unconjugated form of this product ...