

Datasheet for ABIN6736390
anti-Cx40/GJA5 antibody (AA 86-135)[Go to Product page](#)

2 Images

Overview

| | |
|----------------------|--|
| Quantity: | 100 µL |
| Target: | Cx40/GJA5 (GJA5) |
| Binding Specificity: | AA 86-135 |
| Reactivity: | Human, Dog, Cow, Horse |
| Host: | Rabbit |
| Clonality: | Polyclonal |
| Conjugate: | This Cx40/GJA5 antibody is un-conjugated |
| Application: | Western Blotting (WB), Immunohistochemistry (IHC), Immunohistochemistry (Paraffin-embedded Sections) (IHC (p)) |

Product Details

| | |
|-----------------------|---|
| Brand: | IHC-plus™ |
| Immunogen: | Synthetic peptide located between aa86-135 of human GJA5 (P36382, NP_005257). Percent identity by BLAST analysis: Human, Gorilla (100%), Gibbon, Pig (92%), Monkey, Elephant, Panda, Dog, Bovine (85%). Type of Immunogen: Synthetic peptide |
| Specificity: | Human GJA5 / Connexin 40 |
| Predicted Reactivity: | Percent identity by BLAST analysis: Human (100%) Dog (85%). |
| Purification: | Immunoaffinity purified |

Target Details

| | |
|-------------------|--|
| Target: | Cx40/GJA5 (GJA5) |
| Alternative Name: | GJA5 / CX40 / Connexin 40 (GJA5 Products) |
| Background: | Name/Gene ID: GJA5 Subfamily: Connexin Family: Ion Channel Synonyms: GJA5, Connexin 40, Connexin-40, Gap junction alpha-5 protein, ATFB11, CX40, Gap junction protein alpha 5 |
| Gene ID: | 2702 |
| NCBI Accession: | NP_005257 |
| UniProt: | P36382 |
| Pathways: | Cell-Cell Junction Organization |

Application Details

| | |
|--------------------|--|
| Application Notes: | Approved: IHC, IHC-P (5 µg/mL), WB (0.2 - 1 µg/mL) Usage: Immunohistochemistry: This antibody was validated for use in immunohistochemistry on a panel of 21 formalin-fixed, paraffin-embedded (FFPE) human tissues after heat induced antigen retrieval in pH 6.0 citrate buffer. After incubation with the primary antibody, slides were incubated with biotinylated secondary antibody, followed by alkaline phosphatase-streptavidin and chromogen. The stained slides were evaluated by a pathologist to confirm staining specificity. The optimal working concentration for this antibody was determined to be 5 µg/mL. |
| Comment: | Target Species of Antibody: Human |
| Restrictions: | For Research Use only |

Handling

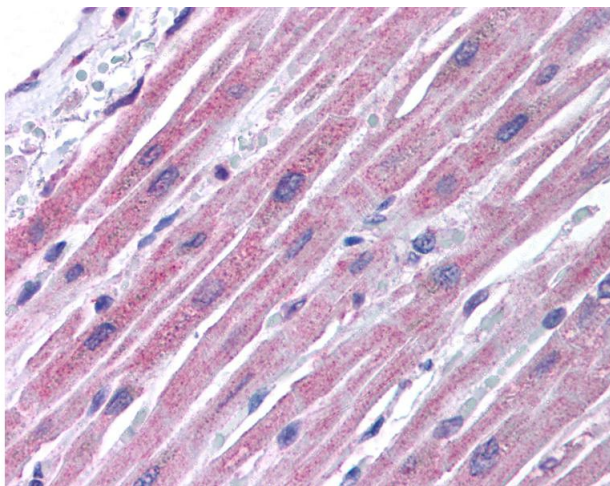
| | |
|------------------|---|
| Format: | Lyophilized |
| Reconstitution: | After adding water, will consist of PBS buffer with 2 % sucrose |
| Concentration: | Lot specific |
| Buffer: | Lyophilized from PBS with 2 % sucrose |
| Handling Advice: | Avoid repeat freeze-thaw cycles. |

Handling

Storage: 4 °C, -20 °C

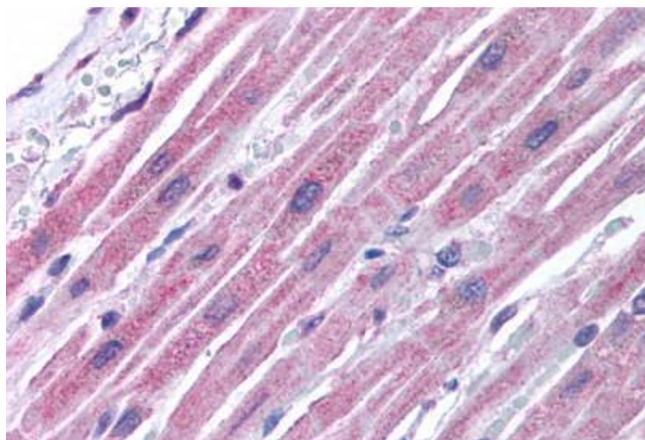
Storage Comment: Long term: -20°C, the use of 50% glycerol is recommended if storing aliquots in -20°C for long term use (up to 1 year)
Short term (less than 1 week): 4°C. Avoid freeze-thaw cycles.

Images



Immunohistochemistry

Image 1. Anti-GJA5 / Connexin 40 antibody IHC of human heart. Immunohistochemistry of formalin-fixed, paraffin-embedded tissue after heat-induced antigen retrieval. Antibody concentration 5 ug/ml. This image was taken for the unconjugated form of this product ...



Immunohistochemistry (Paraffin-embedded Sections)

Image 2. Human Heart (formalin-fixed, paraffin-embedded) stained with GJA5 antibody ABIN214764 at 5 ug/ml followed by biotinylated goat anti-rabbit IgG secondary antibody ABIN481713, alkaline phosphatase-streptavidin and chromogen.