

Datasheet for ABIN6736398 anti-HIPK2 antibody (AA 384-433)



[Go to Product page](#)

2 Images

Overview

Quantity:	100 µL
Target:	HIPK2
Binding Specificity:	AA 384-433
Reactivity:	Human, Mouse, Rat, Dog, Cow, Guinea Pig, Horse, Rabbit, Zebrafish (Danio rerio), Bat, Hamster, Monkey, Pig
Host:	Rabbit
Clonality:	Polyclonal
Conjugate:	This HIPK2 antibody is un-conjugated
Application:	Western Blotting (WB), Immunohistochemistry (IHC), Immunohistochemistry (Paraffin-embedded Sections) (IHC (p))

Product Details

Brand:	IHC-plus™
Immunogen:	Synthetic peptide located between aa384-433 of human HIPK2 (Q9H2X6, NP_073577). Percent identity by BLAST analysis: Human, Chimpanzee, Gorilla, Galago, Marmoset, Mouse, Rat, Hamster, Panda, Dog, Bat, Rabbit, Horse, Pig, Guinea pig (100%), Elephant, Opossum, Turkey, Chicken, Lizard (92%), Zebrafish (86%), Bovine (85%). Type of Immunogen: Synthetic peptide
Specificity:	Human HIPK2
Predicted Reactivity:	Percent identity by BLAST analysis: Human, Mouse, Rat, Dog, Horse, Guinea pig (100%) Rabbit,

Product Details

Chicken (92%) Zebrafish (86%) Bovine (85%).

Purification: Immunoaffinity purified

Target Details

Target: HIPK2

Alternative Name: HIPK2 ([HIPK2 Products](#))

Background: Name/Gene ID: HIPK2

Subfamily: MNB/DYRK

Family: Protein Kinase

Synonyms: HIPK2, HHIPk2, PRO0593, Stank

Gene ID: 28996

NCBI Accession: [NP_073577](#)

UniProt: [Q9H2X6](#)

Pathways: [Cell Division Cycle](#)

Application Details

Application Notes: Approved: IHC, IHC-P (5 µg/mL), WB (0.06 µg/mL)

Usage: Immunohistochemistry: This antibody was validated for use in immunohistochemistry on a panel of 21 formalin-fixed, paraffin-embedded (FFPE) human tissues after heat induced antigen retrieval in pH 6.0 citrate buffer. After incubation with the primary antibody, slides were incubated with biotinylated secondary antibody, followed by alkaline phosphatase-streptavidin and chromogen. The stained slides were evaluated by a pathologist to confirm staining specificity. The optimal working concentration for this antibody was determined to be 5 µg/mL.

Comment: Target Species of Antibody: Human

Restrictions: For Research Use only

Handling

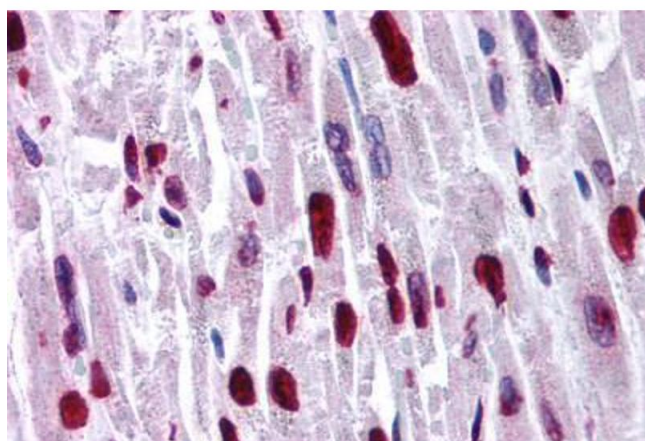
Format: Lyophilized

Reconstitution: After adding water, will consist of PBS buffer with 2 % sucrose

Handling

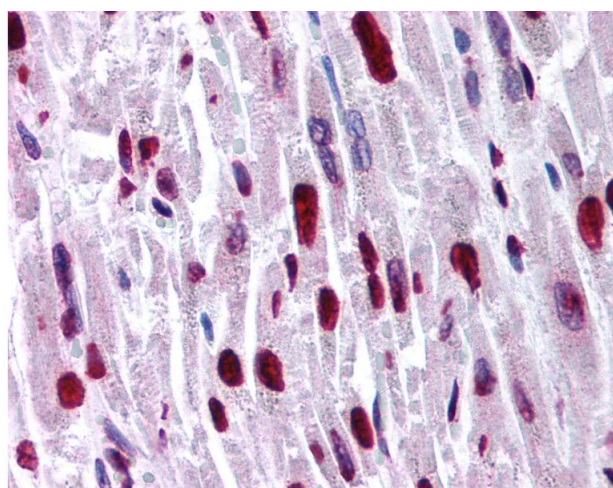
Concentration:	Lot specific
Buffer:	Lyophilized from PBS with 2 % sucrose
Handling Advice:	Avoid repeat freeze-thaw cycles.
Storage:	4 °C,-20 °C
Storage Comment:	Long term: -20°C, the use of 50% glycerol is recommended if storing aliquots in -20°C for long term use (up to 1 year) Short term (less than 1 week): 4°C. Avoid freeze-thaw cycles.

Images



Immunohistochemistry (Paraffin-embedded Sections)

Image 1. Human Heart (formalin-fixed, paraffin-embedded) stained with HIPK2 antibody ABIN214774 at 5 ug/ml followed by biotinylated goat anti-rabbit IgG secondary antibody ABIN481713, alkaline phosphatase-streptavidin and chromogen.



Immunohistochemistry

Image 2. Anti-HIPK2 antibody IHC of human heart. Immunohistochemistry of formalin-fixed, paraffin-embedded tissue after heat-induced antigen retrieval. Antibody concentration 5 ug/ml. This image was taken for the unconjugated form of this product. Other form ...