

Datasheet for ABIN6736400

anti-Serotonin Receptor 1A antibody (N-Term)**2** Images[Go to Product page](#)

Overview

Quantity:	100 µL
Target:	Serotonin Receptor 1A (HTR1A)
Binding Specificity:	N-Term
Reactivity:	Human
Host:	Rabbit
Clonality:	Polyclonal
Conjugate:	This Serotonin Receptor 1A antibody is un-conjugated
Application:	Western Blotting (WB), Immunohistochemistry (IHC), Immunohistochemistry (Paraffin-embedded Sections) (IHC (p))

Product Details

Brand:	IHC-plus™
Immunogen:	Synthetic peptide from N-Terminus of human HTR1A (P08908, NP_000515). Percent identity by BLAST analysis: Human, Gorilla, Orangutan, Gibbon (100%), Chimpanzee (92%), Monkey (85%). Type of Immunogen: Synthetic peptide
Specificity:	Human HTR1A / 5-HT1A
Predicted Reactivity:	Percent identity by BLAST analysis: Human (100%).
Purification:	Immunoaffinity purified

Target Details

Target:	Serotonin Receptor 1A (HTR1A)
Alternative Name:	HTR1A / 5-HT1A Receptor (HTR1A Products)
Background:	Name/Gene ID: HTR1A Subfamily: Serotonin Family: GPCR Synonyms: HTR1A, 5-HT-1A, 5HT1a, 5-HT1a receptor, 5HT1ar, 5HT1A receptor, 5-HT1A, ADRBRL1, ADRB2RL1, PFMCD, Serotonin 5-HT-1a receptor, Serotonin type 1a receptor, Serotonergic type 1A receptor, G-21, Serotonin 1a receptor, Serotonin receptor 1A
Gene ID:	3350
NCBI Accession:	NP_000515
UniProt:	P08908
Pathways:	JAK-STAT Signaling , Synaptic Membrane , Feeding Behaviour

Application Details

Application Notes:	Approved: IHC, IHC-P (2.5 µg/mL), WB (0.06 µg/mL) Usage: Immunohistochemistry: This antibody was validated for use in immunohistochemistry on a panel of 21 formalin-fixed, paraffin-embedded (FFPE) human tissues after heat induced antigen retrieval in pH 6.0 citrate buffer. After incubation with the primary antibody, slides were incubated with biotinylated secondary antibody, followed by alkaline phosphatase-streptavidin and chromogen. The stained slides were evaluated by a pathologist to confirm staining specificity. The optimal working concentration for this antibody was determined to be 2.5 µg/mL.
Comment:	Target Species of Antibody: Human
Restrictions:	For Research Use only

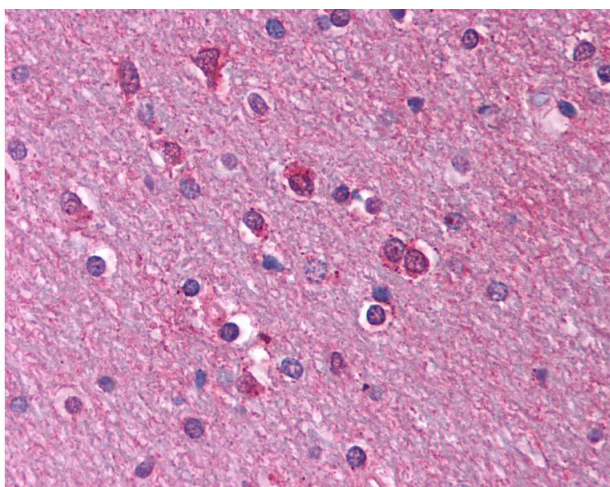
Handling

Format:	Lyophilized
Reconstitution:	Distilled water
Concentration:	Lot specific

Handling

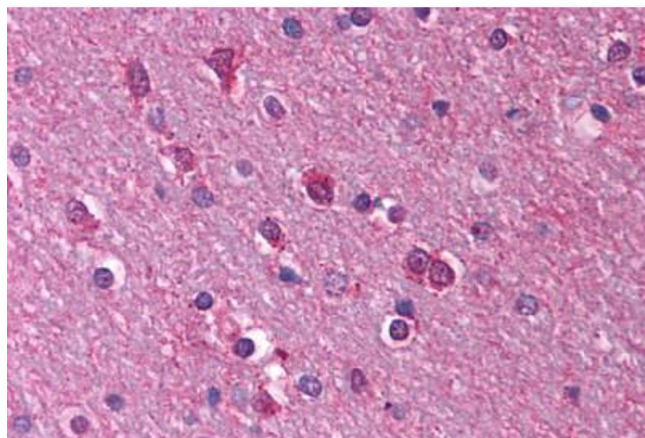
Buffer:	Lyophilized from PBS with 2 % sucrose
Handling Advice:	Avoid repeat freeze-thaw cycles.
Storage:	4 °C, -20 °C
Storage Comment:	Long term: -20°C, the use of 50% glycerol is recommended if storing aliquots in -20°C for long term use (up to 1 year) Short term (less than 1 week): 4°C. Avoid freeze-thaw cycles.

Images



Immunohistochemistry

Image 1. Anti-5HT1A Receptor antibody IHC of human brain, cortex, white matter. Immunohistochemistry of formalin-fixed, paraffin-embedded tissue after heat-induced antigen retrieval. Antibody concentration 5 ug/ml. This image was taken for the unconjugated f ...



Immunohistochemistry (Paraffin-embedded Sections)

Image 2. Human Brain, Cortex, White Matter (formalin-fixed, paraffin-embedded) stained with HTR1A antibody ABIN214777 at 2.5 ug/ml followed by biotinylated goat anti-rabbit IgG secondary antibody ABIN481713, alkaline phosphatase-streptavidin and chromogen.