

Datasheet for ABIN6736402
anti-KCNA7 antibody (C-Term)[Go to Product page](#)

2 Images

Overview

Quantity:	100 µL
Target:	KCNA7
Binding Specificity:	C-Term
Reactivity:	Human
Host:	Rabbit
Clonality:	Polyclonal
Conjugate:	This KCNA7 antibody is un-conjugated
Application:	Immunohistochemistry (IHC), Western Blotting (WB), Immunohistochemistry (Paraffin-embedded Sections) (IHC (p))

Product Details

Brand:	IHC-plus™
Immunogen:	Synthetic peptide from C-Terminus of human KCNA7 (Q96RP8, NP_114092). Percent identity by BLAST analysis: Human, Chimpanzee, Gorilla, Gibbon (100%), Galago, Marmoset, Mouse, Rat, Guinea pig (92%). Type of Immunogen: Synthetic peptide
Specificity:	Human KCNA7 / Kv1.7
Predicted Reactivity:	Percent identity by BLAST analysis: Human (100%) Mouse, Rat, Guinea pig (92%).
Purification:	Immunoaffinity purified

Target Details

Target:	KCNA7
Alternative Name:	KCNA7 / Kv1.7 (KCNA7 Products)
Background:	Name/Gene ID: KCNA7 Subfamily: Potassium channel - Kv1 Shaker Family: Ion Channel Synonyms: KCNA7, HAK6, RK6, KV1.7
Gene ID:	3743
NCBI Accession:	NP_114092
UniProt:	Q96RP8

Application Details

Application Notes:	Approved: IHC, IHC-P (5 µg/mL), WB (0.2 - 1 µg/mL) Usage: Immunohistochemistry: This antibody was validated for use in immunohistochemistry on a panel of 21 formalin-fixed, paraffin-embedded (FFPE) human tissues after heat induced antigen retrieval in pH 6.0 citrate buffer. After incubation with the primary antibody, slides were incubated with biotinylated secondary antibody, followed by alkaline phosphatase-streptavidin and chromogen. The stained slides were evaluated by a pathologist to confirm staining specificity. The optimal working concentration for this antibody was determined to be 5 µg/mL.
Comment:	Target Species of Antibody: Human
Restrictions:	For Research Use only

Handling

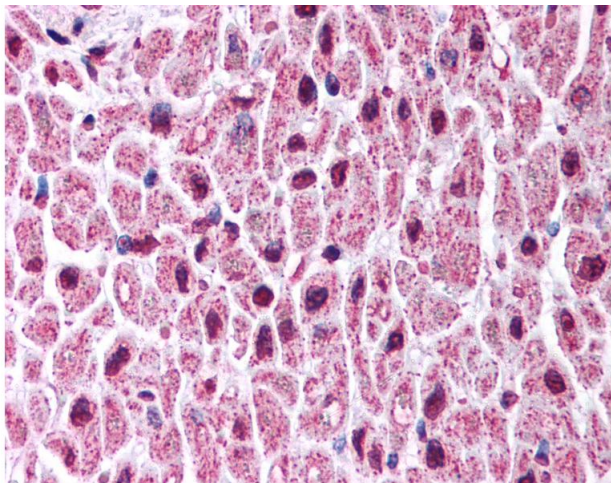
Format:	Lyophilized
Reconstitution:	After adding water, will consist of PBS buffer with 2 % sucrose
Concentration:	Lot specific
Buffer:	Lyophilized from PBS with 2 % sucrose
Handling Advice:	Avoid repeat freeze-thaw cycles.
Storage:	4 °C, -20 °C

Handling

Storage Comment: Long term: -20°C, the use of 50% glycerol is recommended if storing aliquots in -20°C for long term use (up to 1 year)

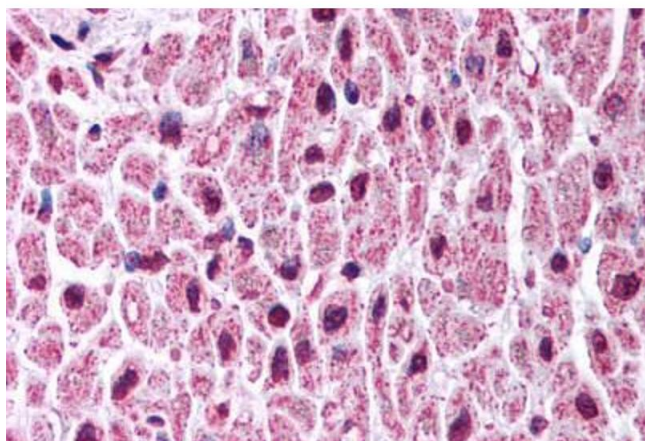
Short term (less than 1 week): 4°C. Avoid freeze-thaw cycles.

Images



Immunohistochemistry

Image 1. Anti-KCNA7 / Kv1.7 antibody IHC of human heart. Immunohistochemistry of formalin-fixed, paraffin-embedded tissue after heat-induced antigen retrieval. Antibody concentration 5 ug/ml. This image was taken for the unconjugated form of this product. Ot ...



Immunohistochemistry (Paraffin-embedded Sections)

Image 2. Human Heart (formalin-fixed, paraffin-embedded) stained with KCNA7 antibody ABIN214779 at 5 ug/ml followed by biotinylated goat anti-rabbit IgG secondary antibody ABIN481713, alkaline phosphatase-streptavidin and chromogen.