

Datasheet for ABIN6736405
anti-KCNH5 antibody (AA 156-205)

2 Images

[Go to Product page](#)

Overview

Quantity:	100 µL
Target:	KCNH5
Binding Specificity:	AA 156-205
Reactivity:	Human, Rat, Mouse, Dog, Cow, Guinea Pig, Horse, Rabbit, Zebrafish (Danio rerio), Bat, Chicken, Monkey, Pig, Xenopus laevis
Host:	Rabbit
Clonality:	Polyclonal
Conjugate:	This KCNH5 antibody is un-conjugated
Application:	Immunohistochemistry (IHC), Western Blotting (WB), Immunohistochemistry (Paraffin-embedded Sections) (IHC (p))

Product Details

Brand:	IHC-plus™
Immunogen:	<p>Synthetic peptide located between aa156-205 of human KCNH5 (Q8NCM2-2, NP_758963). Percent identity by BLAST analysis: Human, Chimpanzee, Gorilla, Gibbon, Monkey, Galago, Marmoset, Mouse, Rat, Elephant, Panda, Dog, Bovine, Bat, Rabbit, Horse, Pig, Opossum, Guinea pig, Turkey, Zebra finch, Chicken, Platypus, Lizard, Xenopus, Zebrafish (100%).</p> <p>Type of Immunogen: Synthetic peptide</p>
Specificity:	Human KCNH5 / Kv10.2
Predicted Reactivity:	Percent identity by BLAST analysis: Human, Bovine, Rabbit, Horse, Pig, Chicken (100%) Mouse,

Product Details

Rat, Guinea pig (92%) Zebrafish (85%).

Purification: Immunoaffinity purified

Target Details

Target: KCNH5

Alternative Name: KCNH5 / Kv10.2 ([KCNH5 Products](#))

Background: Name/Gene ID: KCNH5
Subfamily: Potassium channel - Eag-related
Family: Ion Channel

Synonyms: KCNH5, EAG2, H-EAG2, HEAG2, Kv10.2, Potassium channel HEAG2

Gene ID: 27133

NCBI Accession: [NP_758963](#)

UniProt: [Q8NCM2](#)

Application Details

Application Notes: Approved: IHC, IHC-P (5 µg/mL), WB (0.2 - 1 µg/mL)

Usage: Immunohistochemistry: This antibody was validated for use in immunohistochemistry on a panel of 21 formalin-fixed, paraffin-embedded (FFPE) human tissues after heat induced antigen retrieval in pH 6.0 citrate buffer. After incubation with the primary antibody, slides were incubated with biotinylated secondary antibody, followed by alkaline phosphatase-streptavidin and chromogen. The stained slides were evaluated by a pathologist to confirm staining specificity. The optimal working concentration for this antibody was determined to be 5 µg/mL.

Comment: Target Species of Antibody: Human

Restrictions: For Research Use only

Handling

Format: Lyophilized

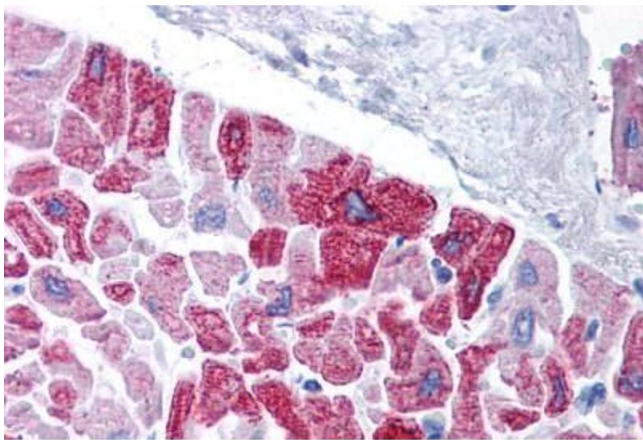
Reconstitution: Distilled water

Concentration: Lot specific

Handling

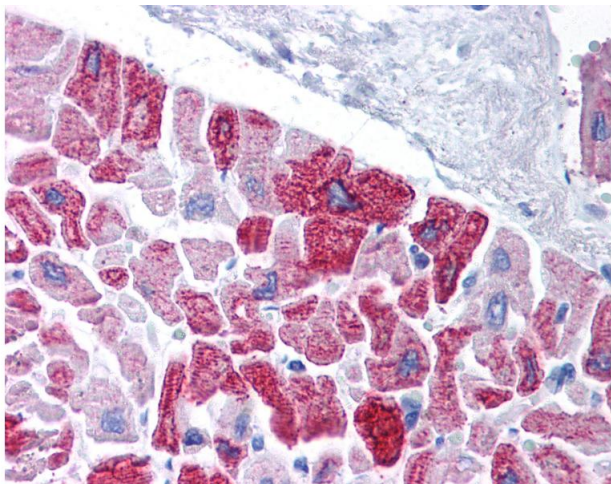
Buffer:	Lyophilized from PBS with 2 % sucrose
Handling Advice:	Avoid repeat freeze-thaw cycles.
Storage:	4 °C, -20 °C
Storage Comment:	Long term: -20°C, the use of 50% glycerol is recommended if storing aliquots in -20°C for long term use (up to 1 year) Short term (less than 1 week): 4°C. Avoid freeze-thaw cycles.

Images



Immunohistochemistry (Paraffin-embedded Sections)

Image 1. Human Heart (formalin-fixed, paraffin-embedded) stained with KCNH5 antibody ABIN214782 at 5 ug/ml followed by biotinylated goat anti-rabbit IgG secondary antibody ABIN481713, alkaline phosphatase-streptavidin and chromogen.



Immunohistochemistry

Image 2. Anti-KCNH5 / Kv10.2 antibody IHC of human heart. Immunohistochemistry of formalin-fixed, paraffin-embedded tissue after heat-induced antigen retrieval. Antibody concentration 5 ug/ml. This image was taken for the unconjugated form of this product. O ...