

Datasheet for ABIN6736406 anti-KCNH6 antibody (AA 628-677)



[Go to Product page](#)

1 Image

Overview

Quantity:	100 µL
Target:	KCNH6
Binding Specificity:	AA 628-677
Reactivity:	Human, Rat, Mouse, Guinea Pig, Zebrafish (Danio rerio), Bat
Host:	Rabbit
Clonality:	Polyclonal
Conjugate:	This KCNH6 antibody is un-conjugated
Application:	Western Blotting (WB), Immunohistochemistry (IHC), Immunohistochemistry (Paraffin-embedded Sections) (IHC (p))

Product Details

Brand:	IHC-plus™
Immunogen:	Synthetic peptide located between aa628-677 of human KCNH6 (Q9H252, NP_110406). Percent identity by BLAST analysis: Human, Chimpanzee, Gibbon, Marmoset, Bat, Guinea pig (100%), Gorilla, Monkey, Galago, Elephant, Dog, Bovine, Rabbit, Horse, Pig (92%), Mouse, Rat (85%), Opossum (84%). Type of Immunogen: Synthetic peptide
Specificity:	Human KCNH6 / Kv11.2
Predicted Reactivity:	Percent identity by BLAST analysis: Human, Guinea pig (100%) Dog, Bovine, Rabbit, Horse, Pig (92%) Mouse, Rat (85%).

Product Details

Purification: Immunoaffinity purified

Target Details

Target: KCNH6

Alternative Name: KCNH6 / Kv11.2 / ERG2 ([KCNH6 Products](#))

Background: Name/Gene ID: KCNH6
Subfamily: Potassium channel - Eag-related
Family: Ion Channel

Synonyms: KCNH6, Eag related protein 2, Eag-related gene member 2, ERG-2, Eag-related protein 2, ERG2, HERG-2, HERG2, Kv11.2

Gene ID: 81033

NCBI Accession: [NP_110406](#)

UniProt: [Q9H252](#)

Application Details

Application Notes: Approved: IHC, IHC-P (5 µg/mL), WB (0.2 - 1 µg/mL)

Usage: Immunohistochemistry: This antibody was validated for use in immunohistochemistry on a panel of 21 formalin-fixed, paraffin-embedded (FFPE) human tissues after heat induced antigen retrieval in pH 6.0 citrate buffer. After incubation with the primary antibody, slides were incubated with biotinylated secondary antibody, followed by alkaline phosphatase-streptavidin and chromogen. The stained slides were evaluated by a pathologist to confirm staining specificity. The optimal working concentration for this antibody was determined to be 5 µg/mL.

Comment: Target Species of Antibody: Human

Restrictions: For Research Use only

Handling

Format: Lyophilized

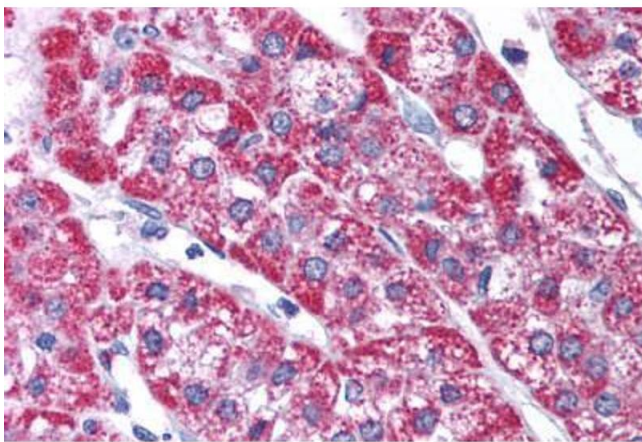
Reconstitution: After adding water, will consist of PBS buffer with 2 % sucrose

Concentration: Lot specific

Handling

Buffer:	Lyophilized from PBS with 2 % sucrose
Handling Advice:	Avoid repeat freeze-thaw cycles.
Storage:	4 °C, -20 °C
Storage Comment:	Long term: -20°C, the use of 50% glycerol is recommended if storing aliquots in -20°C for long term use (up to 1 year) Short term (less than 1 week): 4°C. Avoid freeze-thaw cycles.

Images



Immunohistochemistry

Image 1. Human Adrenal (formalin-fixed, paraffin-embedded) stained with KCNH6 antibody ABIN214783 at 5 ug/ml followed by biotinylated goat anti-rabbit IgG secondary antibody ABIN481713, alkaline phosphatase-streptavidin and chromogen.