

Datasheet for ABIN6736407  
**anti-KCNIP4 antibody (AA 27-76)**

## 2 Images

[Go to Product page](#)

## Overview

Quantity:	100 µL
Target:	KCNIP4
Binding Specificity:	AA 27-76
Reactivity:	Human, Mouse, Rat, Rabbit, Monkey
Host:	Rabbit
Clonality:	Polyclonal
Conjugate:	This KCNIP4 antibody is un-conjugated
Application:	Western Blotting (WB), Immunohistochemistry (IHC), Immunohistochemistry (Paraffin-embedded Sections) (IHC (p))

## Product Details

Brand:	IHC-plus™
Immunogen:	Synthetic peptide located between aa27-76 of human KCNIP4 (Q6PIL6, NP_079497). Percent identity by BLAST analysis: Human, Chimpanzee, Gibbon, Monkey, Mouse, Rat, Rabbit (100%), Dog, Bovine (93%), Marmoset, Platypus (86%), Lizard (80%).  Type of Immunogen: Synthetic peptide
Specificity:	Human KCNIP4
Predicted Reactivity:	Percent identity by BLAST analysis: Human, Mouse (100%) Dog (93%) Rabbit (86%).
Purification:	Immunoaffinity purified

## Target Details

Target:	KCNIP4
Alternative Name:	KCNIP4 / KCHIP4 ( <a href="#">KCNIP4 Products</a> )
Background:	Name/Gene ID: KCNIP4 Family: Ion Channel  Synonyms: KCNIP4, CALP, Calsenilin-like protein, KCHIP4
Gene ID:	80333
NCBI Accession:	<a href="#">NP_079497</a>
UniProt:	<a href="#">Q6PIL6</a>

## Application Details

Application Notes:	Approved: IHC, IHC-P (2.5 µg/mL), WB (0.2 - 1 µg/mL)  Usage: Immunohistochemistry: This antibody was validated for use in immunohistochemistry on a panel of 21 formalin-fixed, paraffin-embedded (FFPE) human tissues after heat induced antigen retrieval in pH 6.0 citrate buffer. After incubation with the primary antibody, slides were incubated with biotinylated secondary antibody, followed by alkaline phosphatase-streptavidin and chromogen. The stained slides were evaluated by a pathologist to confirm staining specificity. The optimal working concentration for this antibody was determined to be 2.5 µg/mL.
Comment:	Target Species of Antibody: Human
Restrictions:	For Research Use only

## Handling

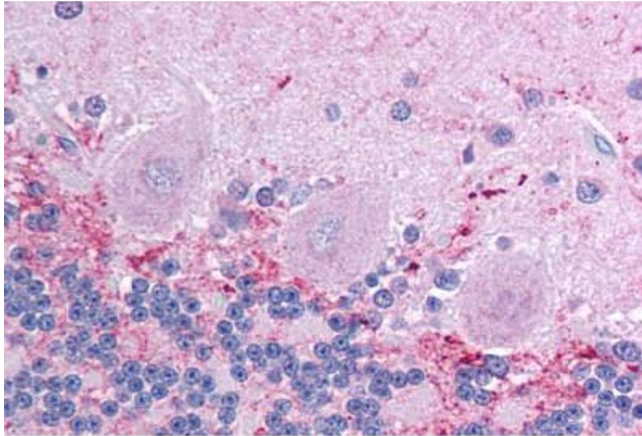
Format:	Lyophilized
Reconstitution:	After adding water, will consist of PBS buffer with 2 % sucrose
Concentration:	Lot specific
Buffer:	Lyophilized from PBS with 2 % sucrose
Handling Advice:	Avoid repeat freeze-thaw cycles.
Storage:	4 °C, -20 °C

## Handling

Storage Comment: Long term: -20°C, the use of 50% glycerol is recommended if storing aliquots in -20°C for long term use (up to 1 year)

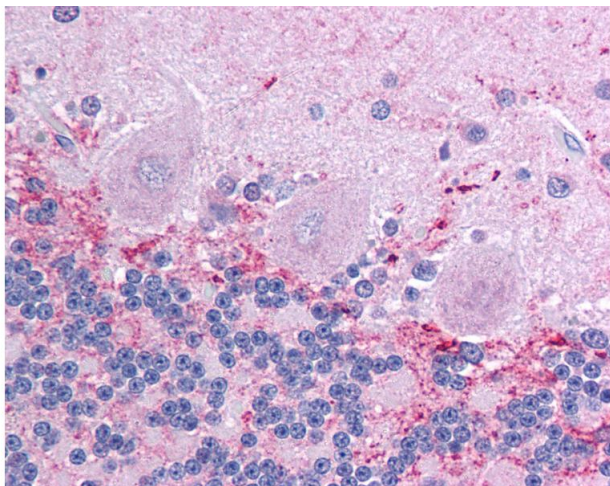
Short term (less than 1 week): 4°C. Avoid freeze-thaw cycles.

## Images



### Immunohistochemistry (Paraffin-embedded Sections)

**Image 1.** Human Brain, Cerebellum (formalin-fixed, paraffin-embedded) stained with KCNIP4 antibody ABIN214784 at 2.5 ug/ml followed by biotinylated goat anti-rabbit IgG secondary antibody ABIN481713, alkaline phosphatase-streptavidin and chromogen.



### Immunohistochemistry

**Image 2.** Anti-KCNIP4 antibody IHC of human brain, cerebellum. Immunohistochemistry of formalin-fixed, paraffin-embedded tissue after heat-induced antigen retrieval. Antibody concentration 5 ug/ml. This image was taken for the unconjugated form of this product ...