



Datasheet for ABIN6736410
anti-KCNN3 antibody (AA 642-691)



[Go to Product page](#)

3 Images

Overview

Quantity:	100 µL
Target:	KCNN3
Binding Specificity:	AA 642-691
Reactivity:	Human, Rat, Mouse, Dog, Cow, Guinea Pig, Rabbit, Bat, Monkey, Pig
Host:	Rabbit
Clonality:	Polyclonal
Conjugate:	This KCNN3 antibody is un-conjugated
Application:	Western Blotting (WB), Immunohistochemistry (IHC), Immunohistochemistry (Paraffin-embedded Sections) (IHC (p))

Product Details

Brand:	IHC-plus™
Immunogen:	Synthetic peptide located between aa642-691 of human KCNN3 (Q9UGI6, NP_002240). Percent identity by BLAST analysis: Human, Chimpanzee, Gorilla, Gibbon, Monkey, Galago, Marmoset, Mouse, Rat, Elephant, Panda, Dog, Bovine, Bat, Rabbit, Pig, Opossum, Guinea pig (100%), Horse (92%), Zebra finch (85%). Type of Immunogen: Synthetic peptide
Specificity:	Human KCNN3
Predicted Reactivity:	Percent identity by BLAST analysis: Human, Mouse, Rat, Dog, Bovine, Rabbit, Pig, Guinea pig (100%).

Product Details

Purification: Immunoaffinity purified

Target Details

Target: KCNN3

Alternative Name: KCNN3 / SK3 ([KCNN3 Products](#))

Background: Name/Gene ID: KCNN3
Subfamily: Potassium channel - calcium-activated
Family: Ion Channel

Synonyms: KCNN3, KCa2.3, HSK3, SKCa 3, SKCA3, K3, SK3

Gene ID: 3782

NCBI Accession: [NP_002240](#)

UniProt: [Q9UGI6](#)

Application Details

Application Notes: Approved: IHC, IHC-P (5 µg/mL), WB (0.2 - 1 µg/mL)

Usage: Immunohistochemistry: This antibody was validated for use in immunohistochemistry on a panel of 21 formalin-fixed, paraffin-embedded (FFPE) human tissues after heat induced antigen retrieval in pH 6.0 citrate buffer. After incubation with the primary antibody, slides were incubated with biotinylated secondary antibody, followed by alkaline phosphatase-streptavidin and chromogen. The stained slides were evaluated by a pathologist to confirm staining specificity. The optimal working concentration for this antibody was determined to be 5 µg/mL.

Comment: Target Species of Antibody: Human

Restrictions: For Research Use only

Handling

Format: Lyophilized

Reconstitution: Distilled water

Concentration: Lot specific

Buffer: Lyophilized from PBS with 2 % sucrose

Handling

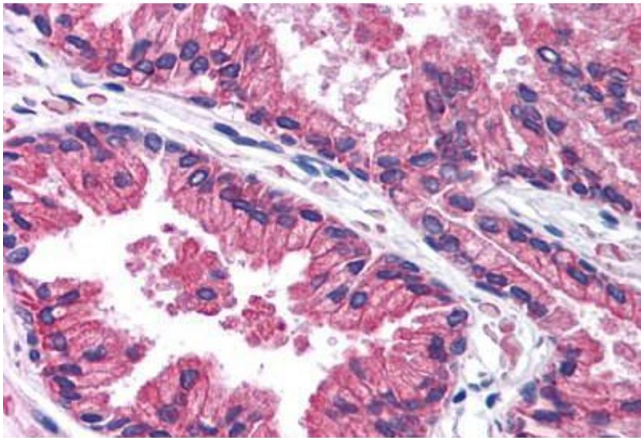
Handling Advice: Avoid repeat freeze-thaw cycles.

Storage: 4 °C, -20 °C

Storage Comment: Long term: -20°C, the use of 50% glycerol is recommended if storing aliquots in -20°C for long term use (up to 1 year)

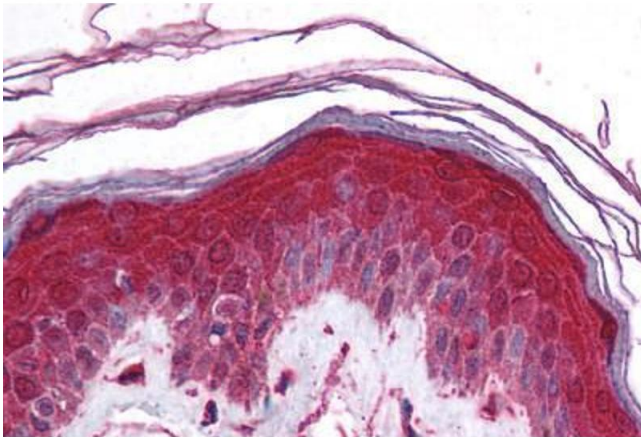
Short term (less than 1 week): 4°C. Avoid freeze-thaw cycles.

Images



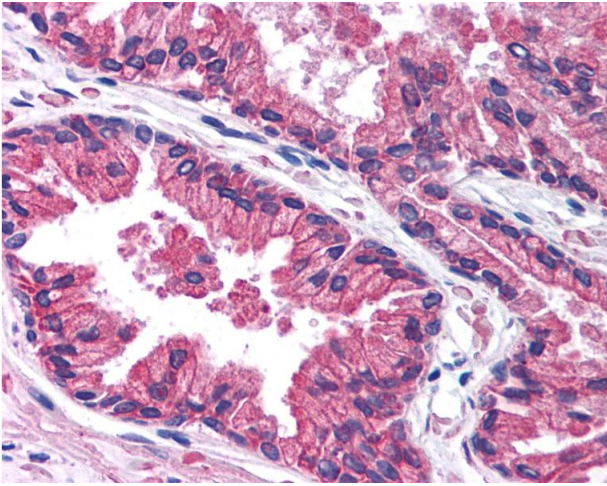
Immunohistochemistry (Paraffin-embedded Sections)

Image 1. Human Prostate (formalin-fixed, paraffin-embedded) stained with KCNN3 antibody ABIN214788 at 5 ug/ml followed by biotinylated goat anti-rabbit IgG secondary antibody ABIN481713, alkaline phosphatase-streptavidin and chromogen.



Immunohistochemistry (Paraffin-embedded Sections)

Image 2. Human Skin (formalin-fixed, paraffin-embedded) stained with KCNN3 antibody ABIN214788 at 5 ug/ml followed by biotinylated goat anti-rabbit IgG secondary antibody ABIN481713, alkaline phosphatase-streptavidin and chromogen.



Immunohistochemistry

Image 3. Anti-KCNN3 antibody IHC of human prostate. Immunohistochemistry of formalin-fixed, paraffin-embedded tissue after heat-induced antigen retrieval. Antibody concentration 5 ug/ml. This image was taken for the unconjugated form of this product. Other f ...