

Datasheet for ABIN6736419  
**anti-P2RX2 antibody (AA 55-104)**

## 2 Images

[Go to Product page](#)

## Overview

Quantity:	100 µL
Target:	P2RX2
Binding Specificity:	AA 55-104
Reactivity:	Human, Mouse, Rat, Guinea Pig, Monkey
Host:	Rabbit
Clonality:	Polyclonal
Conjugate:	This P2RX2 antibody is un-conjugated
Application:	Western Blotting (WB), Immunohistochemistry (IHC), Immunohistochemistry (Paraffin-embedded Sections) (IHC (p))

## Product Details

Brand:	IHC-plus™
Immunogen:	Synthetic peptide located between aa55-104 of human P2RX2 (Q9UBL9, NP_733782). Percent identity by BLAST analysis: Human, Monkey, Mouse, Rat, Guinea pig (100%), Galago, Panda, Dog, Bovine, Rabbit, Horse, Pig, Opossum, Turkey, Chicken, Platypus (92%), Xenopus (84%).  Type of Immunogen: Synthetic peptide
Specificity:	Human P2RX2 / P2X2
Predicted Reactivity:	Percent identity by BLAST analysis: Human, Mouse, Rat, Guinea pig (100%) Dog, Bovine, Rabbit, Horse, Pig, Chicken (92%).
Purification:	Immunoaffinity purified

## Target Details

Target:	P2RX2
Alternative Name:	P2RX2 / P2X2 ( <a href="#">P2RX2 Products</a> )
Background:	Name/Gene ID: P2RX2 Subfamily: P2X receptor Family: Ion Channel  Synonyms: P2RX2, ATP receptor, p2X2, p2X Receptor, subunit 2, Purinergic receptor, p2RX2, p2X receptor 2, p2X purinoceptor 2, p2X2 purinoceptor
Gene ID:	22953
NCBI Accession:	<a href="#">NP_733782</a>
UniProt:	<a href="#">Q9UBL9</a>
Pathways:	<a href="#">Skeletal Muscle Fiber Development</a> , <a href="#">Positive Regulation of Endopeptidase Activity</a>

## Application Details

Application Notes:	Approved: IHC, IHC-P (2.5 µg/mL), WB (0.2 - 1 µg/mL)  Usage: Immunohistochemistry: This antibody was validated for use in immunohistochemistry on a panel of 21 formalin-fixed, paraffin-embedded (FFPE) human tissues after heat induced antigen retrieval in pH 6.0 citrate buffer. After incubation with the primary antibody, slides were incubated with biotinylated secondary antibody, followed by alkaline phosphatase-streptavidin and chromogen. The stained slides were evaluated by a pathologist to confirm staining specificity. The optimal working concentration for this antibody was determined to be 2.5 µg/mL.
Comment:	Target Species of Antibody: Human
Restrictions:	For Research Use only

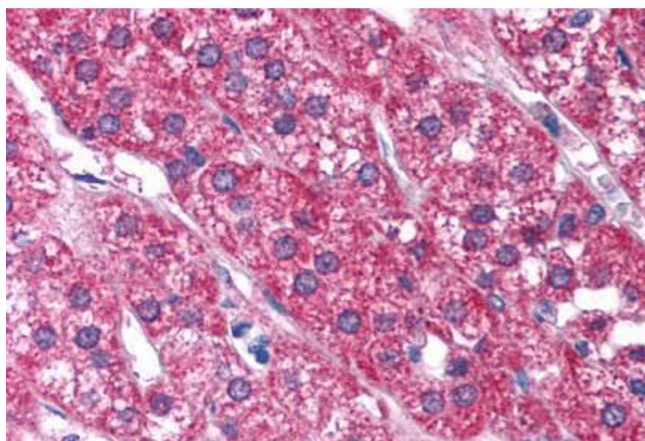
## Handling

Format:	Lyophilized
Reconstitution:	After adding water, will consist of PBS buffer with 2 % sucrose
Concentration:	Lot specific
Buffer:	Lyophilized from PBS with 2 % sucrose

## Handling

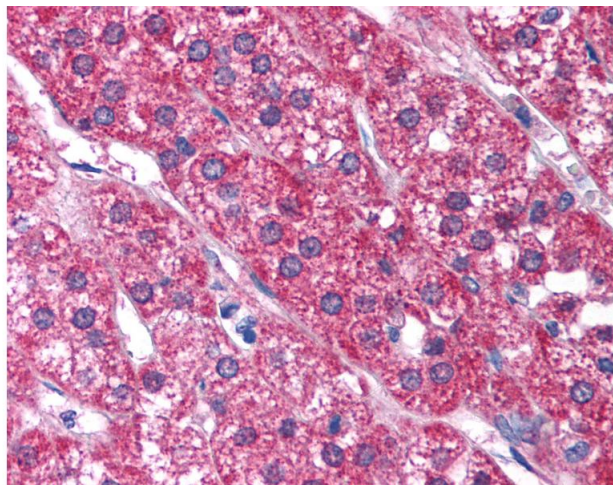
Handling Advice:	Avoid repeat freeze-thaw cycles.
Storage:	4 °C,-20 °C
Storage Comment:	Long term: -20°C, the use of 50% glycerol is recommended if storing aliquots in -20°C for long term use (up to 1 year) Short term (less than 1 week): 4°C. Avoid freeze-thaw cycles.

## Images



### Immunohistochemistry (Paraffin-embedded Sections)

**Image 1.** Human Adrenal (formalin-fixed, paraffin-embedded) stained with P2RX2 antibody ABIN214799 at 2.5 ug/ml followed by biotinylated goat anti-rabbit IgG secondary antibody ABIN481713, alkaline phosphatase-streptavidin and chromogen.



### Immunohistochemistry

**Image 2.** Anti-P2RX2 / P2X2 antibody IHC of human adrenal. Immunohistochemistry of formalin-fixed, paraffin-embedded tissue after heat-induced antigen retrieval. Antibody concentration 5 ug/ml. This image was taken for the unconjugated form of this product. O ...