

Datasheet for ABIN6736422  
**anti-PHKG2 antibody (N-Term)**

## 2 Images

[Go to Product page](#)

## Overview

Quantity:	100 µL
Target:	PHKG2
Binding Specificity:	N-Term
Reactivity:	Human, Dog, Cow, Goat, Guinea Pig, Rabbit, Sheep, Bat, Monkey, Pig
Host:	Rabbit
Clonality:	Polyclonal
Conjugate:	This PHKG2 antibody is un-conjugated
Application:	Western Blotting (WB), Immunohistochemistry (IHC), Immunohistochemistry (Paraffin-embedded Sections) (IHC (p))

## Product Details

Brand:	IHC-plus™
Immunogen:	Synthetic peptide from N-Terminus of human PHKG2 (P15735, NP_000285). Percent identity by BLAST analysis: Human, Chimpanzee, Gorilla, Gibbon, Galago, Marmoset, Sheep, Goat, Elephant, Panda, Dog, Bovine, Bat, Rabbit, Pig, Opossum, Guinea pig (100%), Mouse, Rat, Platypus, Xenopus, Seabass, Salmon, Stickleback, Zebrafish (92%).  Type of Immunogen: Synthetic peptide
Specificity:	Human PHKG2
Predicted Reactivity:	Percent identity by BLAST analysis: Human, Sheep, Dog, Bovine, Goat, Rabbit, Pig, Guinea pig (100%) Mouse, Rat, Zebrafish (92%) Xenopus (85%).

## Product Details

Purification: Immunoaffinity purified

## Target Details

Target: PHKG2

Alternative Name: PHKG2 ([PHKG2 Products](#))

Background: Name/Gene ID: PHKG2

Subfamily: PHK

Family: Protein Kinase

Synonyms: PHKG2, GSD9C, Phosphorylase kinase, gamma 2, PHK-gamma-T, PSK-C3

Gene ID: 5261

NCBI Accession: [NP\\_000285](#)

UniProt: [P15735](#)

Pathways: [Cellular Glucan Metabolic Process](#), [Regulation of Carbohydrate Metabolic Process](#)

## Application Details

Application Notes: Approved: IHC, IHC-P (5 µg/mL), WB (0.2 - 1 µg/mL)

Usage: Immunohistochemistry: This antibody was validated for use in immunohistochemistry on a panel of 21 formalin-fixed, paraffin-embedded (FFPE) human tissues after heat induced antigen retrieval in pH 6.0 citrate buffer. After incubation with the primary antibody, slides were incubated with biotinylated secondary antibody, followed by alkaline phosphatase-streptavidin and chromogen. The stained slides were evaluated by a pathologist to confirm staining specificity. The optimal working concentration for this antibody was determined to be 5 µg/mL.

Comment: Target Species of Antibody: Human

Restrictions: For Research Use only

## Handling

Format: Lyophilized

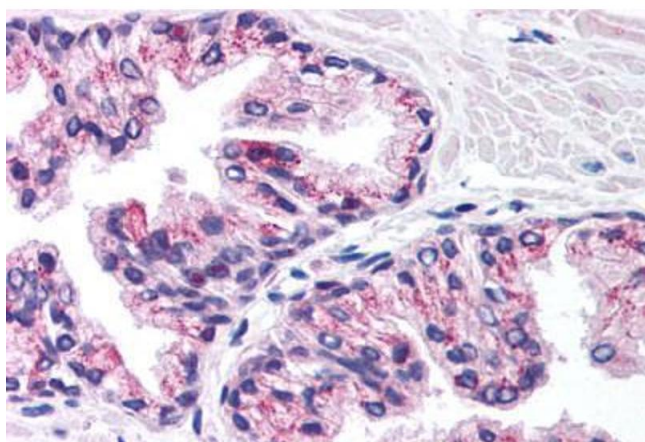
Reconstitution: After adding water, will consist of PBS buffer with 2 % sucrose

Concentration: Lot specific

## Handling

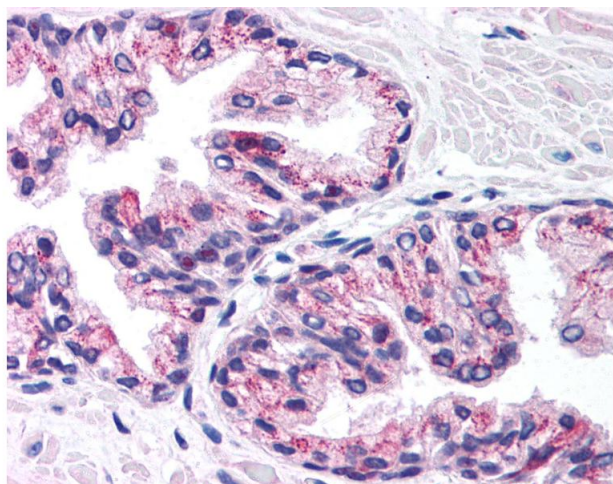
Buffer:	Lyophilized from PBS with 2 % sucrose
Handling Advice:	Avoid repeat freeze-thaw cycles.
Storage:	4 °C, -20 °C
Storage Comment:	Long term: -20°C, the use of 50% glycerol is recommended if storing aliquots in -20°C for long term use (up to 1 year) Short term (less than 1 week): 4°C. Avoid freeze-thaw cycles.

## Images



### Immunohistochemistry (Paraffin-embedded Sections)

**Image 1.** Human Prostate (formalin-fixed, paraffin-embedded) stained with PHKG2 antibody ABIN214802 at 5 ug/ml followed by biotinylated goat anti-rabbit IgG secondary antibody ABIN481713, alkaline phosphatase-streptavidin and chromogen.



### Immunohistochemistry

**Image 2.** Anti-PHKG2 antibody IHC of human prostate. Immunohistochemistry of formalin-fixed, paraffin-embedded tissue after heat-induced antigen retrieval. Antibody concentration 5 ug/ml. This image was taken for the unconjugated form of this product. Other f ...