



[Go to Product page](#)

Datasheet for ABIN6736424
anti-RAB14 antibody (C-Term)

4 Images

Overview

Quantity:	100 µL
Target:	RAB14
Binding Specificity:	C-Term
Reactivity:	Human, Rat, Mouse, Pig, Chicken, Monkey, Dog, Cow, Goat, Guinea Pig, Horse, Rabbit, Hamster, Xenopus laevis, Bat
Host:	Rabbit
Clonality:	Polyclonal
Application:	Western Blotting (WB), Immunohistochemistry (IHC), Immunohistochemistry (Paraffin-embedded Sections) (IHC (p))

Product Details

Brand:	IHC-plus™
Immunogen:	Synthetic peptide from C-Terminus of human RAB14 (P61106, NP_057406). Percent identity by BLAST analysis: Human, Chimpanzee, Gorilla, Orangutan, Gibbon, Monkey, Galago, Marmoset, Mouse, Rat, Goat, Hamster, Elephant, Dog, Bovine, Bat, Rabbit, Horse, Pig, Opossum, Guinea pig, Turkey, Zebra finch, Chicken, Platypus, Xenopus (100%), Zebrafish (93%), Salmon (87%). Type of Immunogen: Synthetic peptide
Specificity:	Human RAB14
Predicted Reactivity:	Percent identity by BLAST analysis: Human, Mouse, Rat, Dog, Bovine, Goat, Pig, Chicken, Xenopus (100%) Zebrafish (93%).

Product Details

Purification: Immunoaffinity purified

Target Details

Target: RAB14

Alternative Name: RAB14 ([RAB14 Products](#))

Background: Name/Gene ID: RAB14
Subfamily: RAS oncogene
Family: Ras GTPase superfamily IPR001806

Synonyms: RAB14, F protein-binding protein 1, FBP, RAB-14, Ras-related protein Rab-14

Gene ID: 51552

NCBI Accession: [NP_057406](#)

UniProt: [P61106](#)

Pathways: [Asymmetric Protein Localization](#), [SARS-CoV-2 Protein Interactome](#)

Application Details

Application Notes: Approved: IHC, IHC-P (5 µg/mL), WB (0.2 - 1 µg/mL)

Usage: Immunohistochemistry: This antibody was validated for use in immunohistochemistry on a panel of 21 formalin-fixed, paraffin-embedded (FFPE) human tissues after heat induced antigen retrieval in pH 6.0 citrate buffer. After incubation with the primary antibody, slides were incubated with biotinylated secondary antibody, followed by alkaline phosphatase-streptavidin and chromogen. The stained slides were evaluated by a pathologist to confirm staining specificity. The optimal working concentration for this antibody was determined to be 5 µg/mL.

Comment: Target Species of Antibody: Human

Restrictions: For Research Use only

Handling

Format: Lyophilized

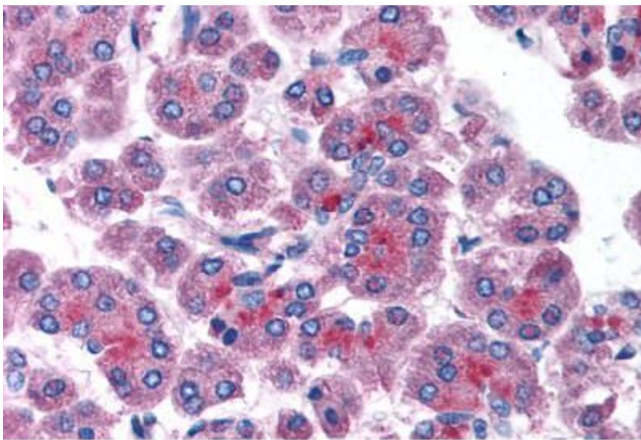
Reconstitution: After adding water, will consist of PBS buffer with 2 % sucrose

Concentration: Lot specific

Handling

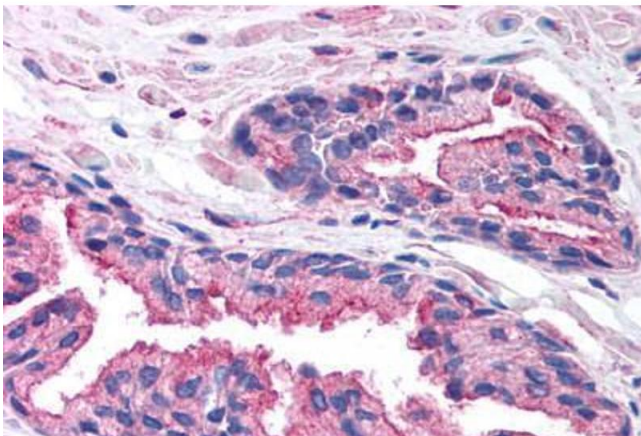
Buffer:	Lyophilized.
Handling Advice:	Avoid repeat freeze-thaw cycles.
Storage:	4 °C, -20 °C
Storage Comment:	Long term: -20°C, the use of 50% glycerol is recommended if storing aliquots in -20°C for long term use (up to 1 year) Short term (less than 1 week): 4°C. Avoid freeze-thaw cycles.

Images



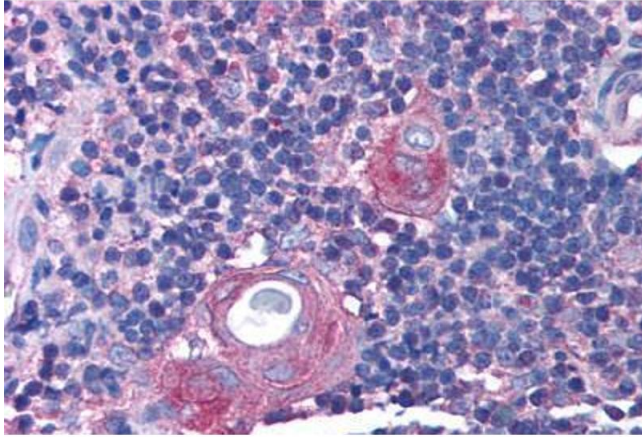
Immunohistochemistry (Paraffin-embedded Sections)

Image 1. Human Pancreas (formalin-fixed, paraffin-embedded) stained with RAB14 antibody ABIN214804 at 5 ug/ml followed by biotinylated goat anti-rabbit IgG secondary antibody ABIN481713, alkaline phosphatase-streptavidin and chromogen.



Immunohistochemistry (Paraffin-embedded Sections)

Image 2. Human Prostate (formalin-fixed, paraffin-embedded) stained with RAB14 antibody ABIN214804 at 5 ug/ml followed by biotinylated goat anti-rabbit IgG secondary antibody ABIN481713, alkaline phosphatase-streptavidin and chromogen.



Immunohistochemistry (Paraffin-embedded Sections)

Image 3. Human Thymus (formalin-fixed, paraffin-embedded) stained with RAB14 antibody ABIN214804 at 5 ug/ml followed by biotinylated goat anti-rabbit IgG secondary antibody ABIN481713, alkaline phosphatase-streptavidin and chromogen.

Please check the [product details page](#) for more images. Overall 4 images are available for ABIN6736424.