

Datasheet for ABIN6736425
anti-RGS10 antibody (C-Term)

3 Images

[Go to Product page](#)

Overview

Quantity:	100 µL
Target:	RGS10
Binding Specificity:	C-Term
Reactivity:	Human, Cow, Dog, Guinea Pig, Horse, Monkey
Host:	Rabbit
Clonality:	Polyclonal
Conjugate:	This RGS10 antibody is un-conjugated
Application:	Western Blotting (WB), Immunohistochemistry (IHC), Immunohistochemistry (Paraffin-embedded Sections) (IHC (p))

Product Details

Brand:	IHC-plus™
Immunogen:	Synthetic peptide from C-Terminus of human RGS10 (Q96GN0, NP_001005339). Percent identity by BLAST analysis: Human, Gorilla, Gibbon, Monkey, Galago, Marmoset, Dog, Horse, Opossum, Guinea pig (100%), Rat, Rabbit, Pig (90%), Elephant (83%), Bovine (81%). Type of Immunogen: Synthetic peptide
Specificity:	Human RGS10
Predicted Reactivity:	Percent identity by BLAST analysis: Human, Dog, Horse, Guinea pig (100%) Rat, Rabbit (90%) Bovine (81%).
Purification:	Immunoaffinity purified

Target Details

Target:	RGS10
Alternative Name:	RGS10 (RGS10 Products)
Background:	Name/Gene ID: RGS10 Family: Regulator of G-protein signalling Synonyms: RGS10
Gene ID:	6001
NCBI Accession:	NP_001005339
UniProt:	O43665
Pathways:	Myometrial Relaxation and Contraction, Regulation of G-Protein Coupled Receptor Protein Signaling

Application Details

Application Notes:	Approved: IHC, IHC-P (5 µg/mL), WB (0.2 - 1 µg/mL) Usage: Immunohistochemistry: This antibody was validated for use in immunohistochemistry on a panel of 21 formalin-fixed, paraffin-embedded (FFPE) human tissues after heat induced antigen retrieval in pH 6.0 citrate buffer. After incubation with the primary antibody, slides were incubated with biotinylated secondary antibody, followed by alkaline phosphatase-streptavidin and chromogen. The stained slides were evaluated by a pathologist to confirm staining specificity. The optimal working concentration for this antibody was determined to be 5 µg/mL. Not recommended for: Flo
Comment:	Target Species of Antibody: Human
Restrictions:	For Research Use only

Handling

Format:	Lyophilized
Reconstitution:	After adding water, will consist of PBS buffer with 2 % sucrose
Concentration:	Lot specific
Buffer:	Lyophilized.

Handling

Handling Advice:	Avoid repeat freeze-thaw cycles.
Storage:	4 °C,-20 °C
Storage Comment:	Long term: -20°C, the use of 50% glycerol is recommended if storing aliquots in -20°C for long term use (up to 1 year) Short term (less than 1 week): 4°C. Avoid freeze-thaw cycles.

Images

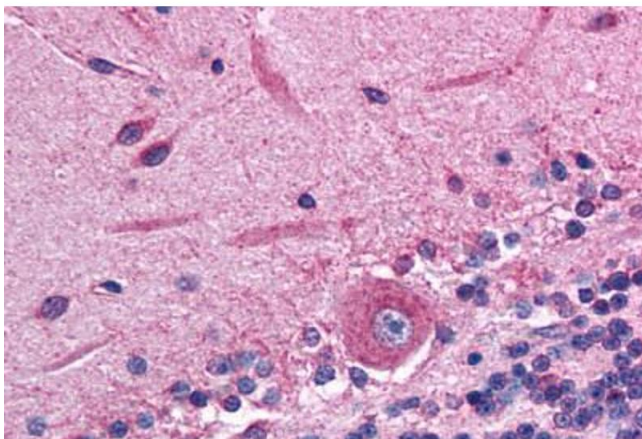


Image 1. Brain, cerebellum

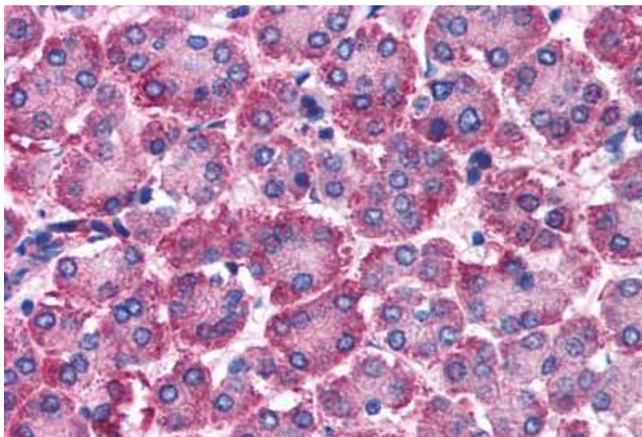
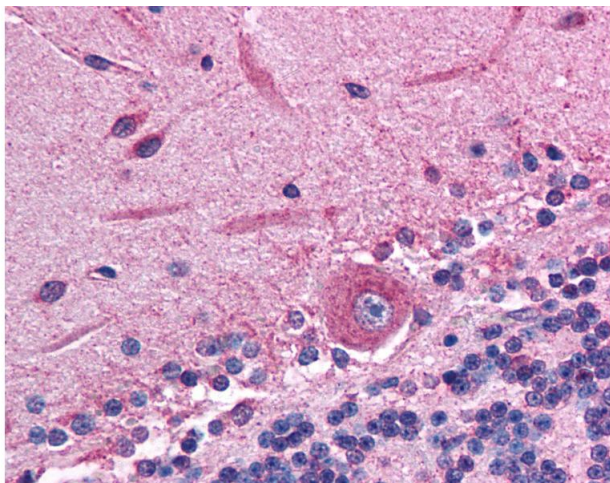


Image 2. Pancreas



Immunohistochemistry

Image 3. Anti-RGS10 antibody IHC of human brain, cerebellum. Immunohistochemistry of formalin-fixed, paraffin-embedded tissue after heat-induced antigen retrieval. Antibody concentration 5 ug/ml. This image was taken for the unconjugated form of this product ...