



[Go to Product page](#)

Datasheet for ABIN6736429  
**anti-SLC17A2 antibody (AA 230-279)**

2 Images

Overview

Quantity:	100 µL
Target:	SLC17A2
Binding Specificity:	AA 230-279
Reactivity:	Human, Mouse
Host:	Rabbit
Clonality:	Polyclonal
Conjugate:	This SLC17A2 antibody is un-conjugated
Application:	Western Blotting (WB), Immunohistochemistry (IHC), Immunohistochemistry (Paraffin-embedded Sections) (IHC (p))

Product Details

Brand:	IHC-plus™
Immunogen:	Synthetic peptide located between aa230-279 of human SLC17A2 (O00624, NP_005826). Percent identity by BLAST analysis: Human, Chimpanzee, Gorilla (100%), Gibbon, Monkey, Galago, Elephant (92%), Pig (91%), Guinea pig (90%), Marmoset, Mouse, Bovine (84%).  Type of Immunogen: Synthetic peptide
Specificity:	Human SLC17A2
Predicted Reactivity:	Percent identity by BLAST analysis: Human (100%) Pig (91%) Guinea pig (90%) Mouse (84%).
Purification:	Immunoaffinity purified

## Target Details

---

Target:	SLC17A2
Alternative Name:	SLC17A2 ( <a href="#">SLC17A2 Products</a> )
Background:	Name/Gene ID: SLC17A2 Subfamily: Sodium:phosphate symporter Family: Transporter  Synonyms: SLC17A2, Na(+)/PI cotransporter 3, NPT3, Sodium phosphate transporter 3
Gene ID:	10246
NCBI Accession:	<a href="#">NP_005826</a>
UniProt:	<a href="#">O00624</a>

## Application Details

---

Application Notes:	Approved: IHC, IHC-P (5 µg/mL), WB (0.2 - 1 µg/mL)  Usage: Immunohistochemistry: This antibody was validated for use in immunohistochemistry on a panel of 21 formalin-fixed, paraffin-embedded (FFPE) human tissues after heat induced antigen retrieval in pH 6.0 citrate buffer. After incubation with the primary antibody, slides were incubated with biotinylated secondary antibody, followed by alkaline phosphatase-streptavidin and chromogen. The stained slides were evaluated by a pathologist to confirm staining specificity. The optimal working concentration for this antibody was determined to be 5 µg/mL.
Comment:	Target Species of Antibody: Human
Restrictions:	For Research Use only

## Handling

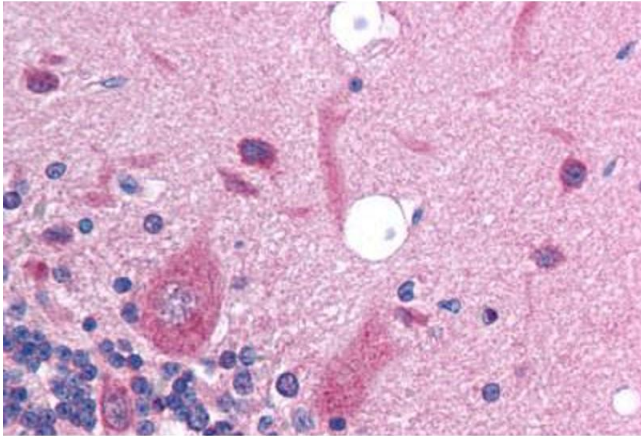
---

Format:	Lyophilized
Reconstitution:	After adding water, will consist of PBS buffer with 2 % sucrose
Concentration:	Lot specific
Buffer:	Lyophilized from PBS with 2 % sucrose
Handling Advice:	avoid freeze thaw cycles.
Storage:	4 °C, -20 °C

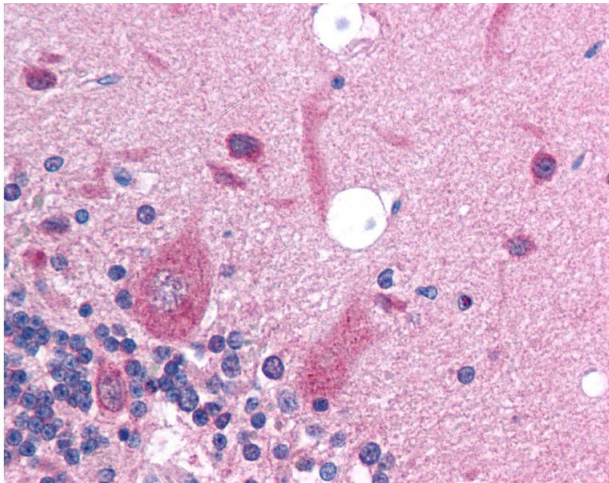
## Handling

Storage Comment: Long term: -20°C, the use of 50% glycerol is recommended if storing aliquots in -20°C for long term use (up to 1 year)  
Short term (less than 1 week): 4°C. Avoid freeze-thaw cycles.

## Images



**Image 1.** Brain, cerebellum



### Immunohistochemistry

**Image 2.** Anti-SLC17A2 antibody IHC of human brain-cerebellum. Immunohistochemistry of formalin-fixed, paraffin-embedded tissue after heat-induced antigen retrieval. Antibody concentration 5 ug/ml. This image was taken for the unconjugated form of this produc ...