

Datasheet for ABIN6736431
anti-SREBF2 antibody (AA 434-483)

2 Images

[Go to Product page](#)

Overview

Quantity:	100 µL
Target:	SREBF2
Binding Specificity:	AA 434-483
Reactivity:	Human, Rat, Mouse, Dog, Cow, Guinea Pig, Horse, Chicken, Pig, Bat, Hamster, Monkey, Rabbit
Host:	Rabbit
Clonality:	Polyclonal
Conjugate:	This SREBF2 antibody is un-conjugated
Application:	Western Blotting (WB), Immunohistochemistry (IHC), Immunohistochemistry (Paraffin-embedded Sections) (IHC (p))

Product Details

Brand:	IHC-plus™
Immunogen:	<p>Synthetic peptide located between aa434-483 of human SREBF2 (Q12772, NP_004590).</p> <p>Percent identity by BLAST analysis: Human, Chimpanzee, Gorilla, Gibbon, Monkey, Galago, Mouse, Rat, Hamster, Elephant, Dog, Bovine, Bat, Rabbit, Horse, Pig, Guinea pig, Turkey, Chicken, Platypus (100%), Zebra finch, Lizard (93%), Xenopus (80%).</p> <p>Type of Immunogen: Synthetic peptide</p>
Specificity:	Human SREBF2 / SREBP-2
Predicted Reactivity:	Percent identity by BLAST analysis: Human, Rat, Dog, Bovine, Horse, Guinea pig, Chicken (100%).

Product Details

Purification: Immunoaffinity purified

Target Details

Target: SREBF2

Alternative Name: SREBF2 / SREBP2 ([SREBF2 Products](#))

Background: Name/Gene ID: SREBF2

Synonyms: SREBF2, SREBP2, SREBP-2, BHLHd2

Gene ID: 6721

NCBI Accession: [NP_004590](#)

UniProt: [Q12772](#)

Pathways: [Regulation of Lipid Metabolism by PPARalpha](#)

Application Details

Application Notes: Approved: IHC, IHC-P (2.5 µg/mL), WB (0.2 - 1 µg/mL)

Usage: Immunohistochemistry: This antibody was validated for use in immunohistochemistry on a panel of 21 formalin-fixed, paraffin-embedded (FFPE) human tissues after heat induced antigen retrieval in pH 6.0 citrate buffer. After incubation with the primary antibody, slides were incubated with biotinylated secondary antibody, followed by alkaline phosphatase-streptavidin and chromogen. The stained slides were evaluated by a pathologist to confirm staining specificity. The optimal working concentration for this antibody was determined to be 2.5 µg/ul. Antibody has been tested in peptide-based ELISA.

Comment: Target Species of Antibody: Human

Restrictions: For Research Use only

Handling

Format: Lyophilized

Reconstitution: After adding water, will consist of PBS buffer with 2 % sucrose

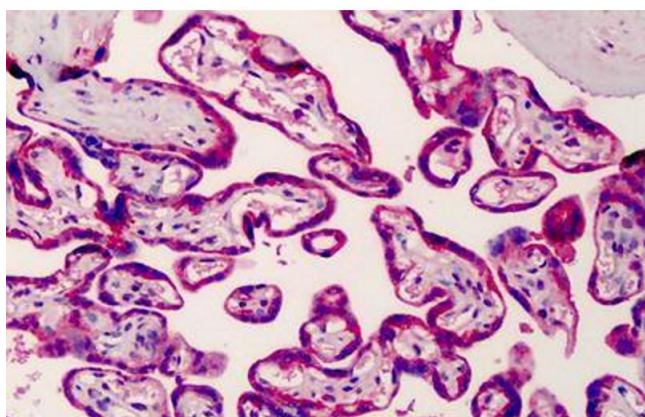
Concentration: Lot specific

Buffer: Lyophilized.

Handling

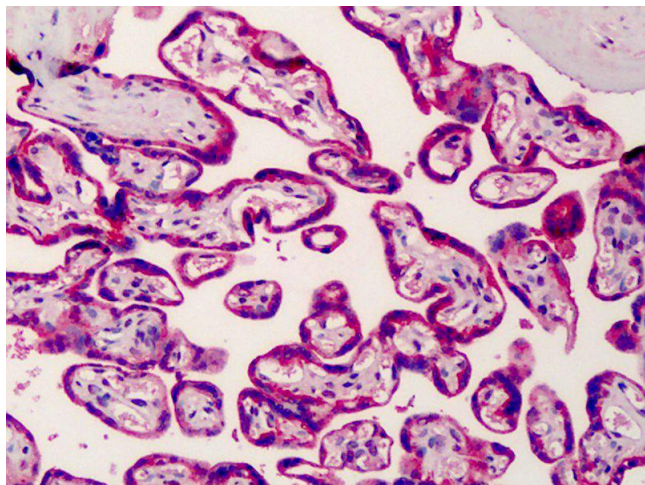
Handling Advice:	Avoid repeated freezing and thawing.
Storage:	4 °C,-20 °C
Storage Comment:	Long term: -20°C, the use of 50% glycerol is recommended if storing aliquots in -20°C for long term use (up to 1 year) Short term (less than 1 week): 4°C. Avoid freeze-thaw cycles.

Images



Immunohistochemistry (Formalin-fixed Paraffin-embedded Sections)

Image 1. Human Placenta: Formalin-Fixed, Paraffin-Embedded (FFPE)



Immunohistochemistry

Image 2. Anti-SREBP-2 antibody IHC of human placenta. Immunohistochemistry of formalin-fixed, paraffin-embedded tissue after heat-induced antigen retrieval. Antibody concentration 2.5 ug/ml. This image was taken for the unconjugated form of this product. Oth ...