

Datasheet for ABIN6736432
anti-TCF7 antibody (AA 228-277)

2 Images

[Go to Product page](#)

Overview

Quantity:	100 µL
Target:	TCF7
Binding Specificity:	AA 228-277
Reactivity:	Human, Cow, Guinea Pig, Horse, Rabbit, Monkey, Bat
Host:	Rabbit
Clonality:	Polyclonal
Conjugate:	This TCF7 antibody is un-conjugated
Application:	Western Blotting (WB), Immunohistochemistry (IHC), Immunohistochemistry (Paraffin-embedded Sections) (IHC (p))

Product Details

Brand:	IHC-plus™
Immunogen:	Synthetic peptide located between aa228-277 of human TCF7 (Q86WR9, NP_003193). Percent identity by BLAST analysis: Human, Chimpanzee, Gorilla, Gibbon, Monkey, Marmoset, Bat, Horse, Guinea pig (100%), Galago, Mouse, Rat, Panda, Dog, Pig (92%), Elephant, Bovine, Rabbit (85%). Type of Immunogen: Synthetic peptide
Specificity:	Human TCF7
Predicted Reactivity:	Percent identity by BLAST analysis: Human, Horse, Guinea pig (100%) Mouse, Rat, Dog, Pig (92%) Bovine, Rabbit (85%).

Product Details

Purification: Immunoaffinity purified

Target Details

Target: TCF7

Alternative Name: TCF-1 / TCF7 ([TCF7 Products](#))

Background: Name/Gene ID: TCF7
Family: Transcription factor

Synonyms: TCF7, TCF-7, TCF1, Transcription factor 7, T-cell factor 1, TCF-1

Gene ID: 6932

NCBI Accession: [NP_003193](#)

UniProt: [P36402](#)

Pathways: [WNT Signaling](#)

Application Details

Application Notes: Approved: IHC, IHC-P (5 µg/mL), WB (0.12 µg/mL)

Usage: Immunohistochemistry: This antibody was validated for use in immunohistochemistry on a panel of 21 formalin-fixed, paraffin-embedded (FFPE) human tissues after heat induced antigen retrieval in pH 6.0 citrate buffer. After incubation with the primary antibody, slides were incubated with biotinylated secondary antibody, followed by alkaline phosphatase-streptavidin and chromogen. The stained slides were evaluated by a pathologist to confirm staining specificity. The optimal working concentration for this antibody was determined to be 5 µg/ul. Antibody has been tested in peptide-based ELISA.

Comment: Target Species of Antibody: Human

Restrictions: For Research Use only

Handling

Format: Lyophilized

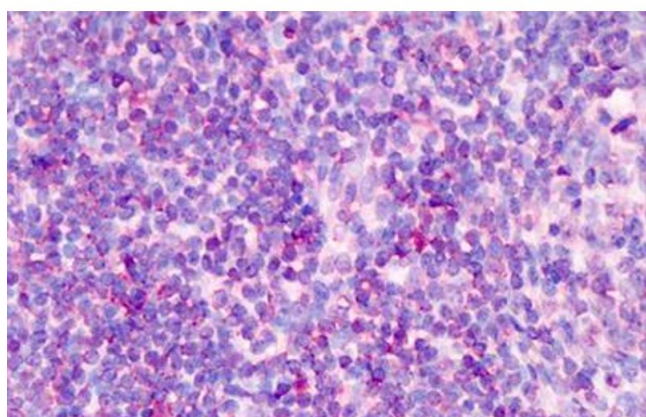
Reconstitution: After adding water, will consist of PBS buffer with 2 % sucrose

Concentration: Lot specific

Handling

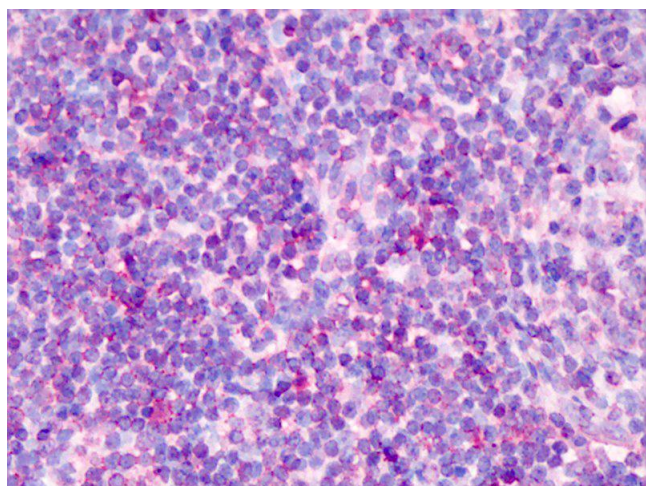
Buffer:	Lyophilized from PBS with 2 % sucrose
Handling Advice:	Avoid repeat freeze-thaw cycles.
Storage:	4 °C, -20 °C
Storage Comment:	Long term: -20°C, the use of 50% glycerol is recommended if storing aliquots in -20°C for long term use (up to 1 year) Short term (less than 1 week): 4°C. Avoid freeze-thaw cycles.

Images



Immunohistochemistry

Image 1. Human Tonsil: Formalin-Fixed, Paraffin-Embedded (FFPE)



Immunohistochemistry

Image 2. Anti-TCF7 antibody IHC of human tonsil. Immunohistochemistry of formalin-fixed, paraffin-embedded tissue after heat-induced antigen retrieval. Antibody concentration 5 ug/ml. This image was taken for the unconjugated form of this product. Other form ...