

Datasheet for ABIN6736433

anti-TGFB11 antibody (AA 179-228)



[Go to Product page](#)

2 Images

Overview

Quantity:	100 µL
Target:	TGFB11
Binding Specificity:	AA 179-228
Reactivity:	Human, Mouse, Rat, Cow, Rabbit, Horse, Goat, Guinea Pig, Monkey
Host:	Rabbit
Clonality:	Polyclonal
Conjugate:	This TGFB11 antibody is un-conjugated
Application:	Western Blotting (WB), Immunohistochemistry (IHC), Immunohistochemistry (Paraffin-embedded Sections) (IHC (p))

Product Details

Brand:	IHC-plus™
Immunogen:	<p>Synthetic peptide located between aa179-228 of human TGFB11 (B2R8D5, NP_057011).</p> <p>Percent identity by BLAST analysis: Human, Chimpanzee, Gorilla, Gibbon, Monkey, Galago, Marmoset, Mouse, Rat, Elephant, Bovine, Rabbit, Horse, Guinea pig (100%), Panda, Dog, Bat, Opossum (92%), Goat (85%).</p> <p>Type of Immunogen: Synthetic peptide</p>
Specificity:	Human TGFB11 / HIC-5
Predicted Reactivity:	Percent identity by BLAST analysis: Mouse, Rat, Rabbit, Horse, Guinea pig (100%) Dog (92%) Goat (85%).

Product Details

Purification: Protein A purified

Target Details

Target: TGFB111

Alternative Name: ARA55 / HIC-5 ([TGFB111 Products](#))

Background: Name/Gene ID: TGFB111
Family: TGF beta

Synonyms: TGFB111, ARA55, HIC5, HIC-5, TSC-5

Gene ID: 7041

NCBI Accession: [NP_057011](#)

UniProt: [O43294](#)

Pathways: [Intracellular Steroid Hormone Receptor Signaling Pathway](#), [VEGF Signaling](#)

Application Details

Application Notes: Approved: IHC, IHC-P (5 µg/mL), WB (0.2 - 1 µg/mL)

Usage: Immunohistochemistry: This antibody was validated for use in immunohistochemistry on a panel of 21 formalin-fixed, paraffin-embedded (FFPE) human tissues after heat induced antigen retrieval in pH 6.0 citrate buffer. After incubation with the primary antibody, slides were incubated with biotinylated secondary antibody, followed by alkaline phosphatase-streptavidin and chromogen. The stained slides were evaluated by a pathologist to confirm staining specificity. The optimal working concentration for this antibody was determined to be 5 µg/mL. Antibody tested in peptide-based ELISA.

Comment: Target Species of Antibody: Human

Restrictions: For Research Use only

Handling

Format: Lyophilized

Reconstitution: After adding water, will consist of PBS buffer with 2 % sucrose

Concentration: Lot specific

Handling

Buffer:	Lyophilized from PBS with 2 % sucrose
Handling Advice:	Avoid repeat freeze-thaw cycles.
Storage:	4 °C, -20 °C
Storage Comment:	Long term: -20°C, the use of 50% glycerol is recommended if storing aliquots in -20°C for long term use (up to 1 year) Short term (less than 1 week): 4°C. Avoid freeze-thaw cycles.

Images

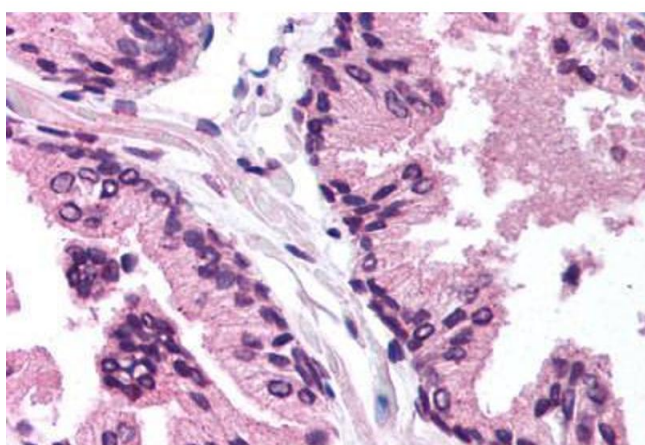
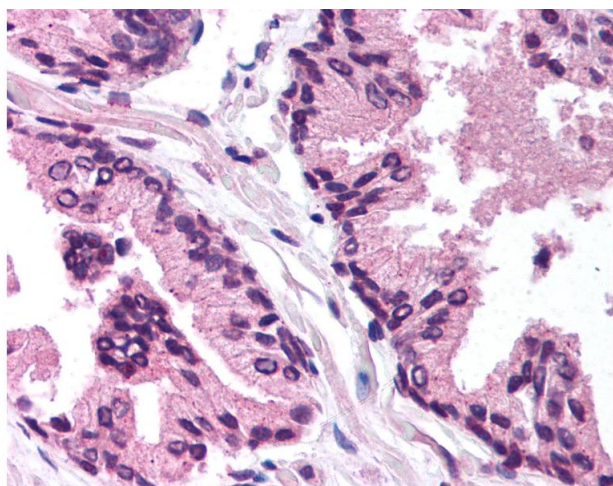


Image 1. Prostate



Immunohistochemistry

Image 2. Anti-TGFB1I1 / HIC-5 antibody IHC of human prostate. Immunohistochemistry of formalin-fixed, paraffin-embedded tissue after heat-induced antigen retrieval. Antibody concentration 5 ug/ml. This image was taken for the unconjugated form of this produc ...