

Datasheet for ABIN6736436 anti-TRIM14 antibody (AA 116-165)



[Go to Product page](#)

2 Images

Overview

Quantity:	100 µL
Target:	TRIM14
Binding Specificity:	AA 116-165
Reactivity:	Human, Rabbit, Dog, Bat
Host:	Rabbit
Clonality:	Polyclonal
Conjugate:	This TRIM14 antibody is un-conjugated
Application:	Western Blotting (WB), Immunohistochemistry (IHC), Immunohistochemistry (Paraffin-embedded Sections) (IHC (p))

Product Details

Brand:	IHC-plus™
Immunogen:	Synthetic peptide located between aa116-165 of human TRIM14 (Q5TBQ8). Percent identity by BLAST analysis: Human, Gorilla, Gibbon, Bat (100%), Monkey, Marmoset, Mouse, Rat, Bovine, Horse, Pig (92%), Galago, Dog, Rabbit, Guinea pig (85%). Type of Immunogen: Synthetic peptide
Specificity:	Human TRIM14
Predicted Reactivity:	Percent identity by BLAST analysis: Human (100%) Mouse, Rat, Bovine, Horse, Pig (92%) Dog, Rabbit (85%).
Purification:	Immunoaffinity purified

Target Details

Target:	TRIM14
Alternative Name:	TRIM14 (TRIM14 Products)
Background:	Name/Gene ID: TRIM14 Family: Tripartite Motif Synonyms: TRIM14, KIAA0129, Tripartite motif containing 14, Tripartite motif-containing 14
Gene ID:	9830
UniProt:	Q14142

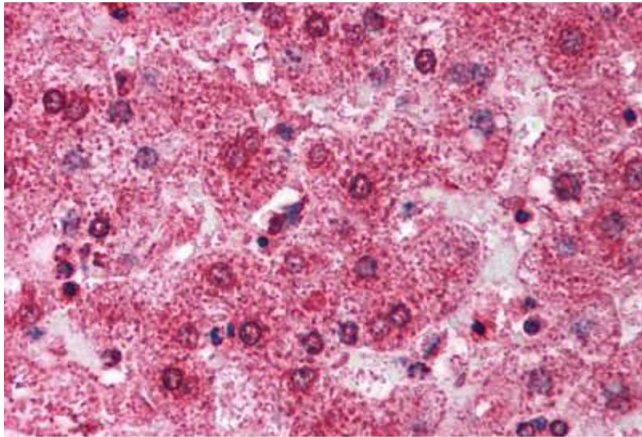
Application Details

Application Notes:	Approved: IHC, IHC-P (2.5 µg/mL), WB (0.2 - 1 µg/mL) Usage: Immunohistochemistry: This antibody was validated for use in immunohistochemistry on a panel of 21 formalin-fixed, paraffin-embedded (FFPE) human tissues after heat induced antigen retrieval in pH 6.0 citrate buffer. After incubation with the primary antibody, slides were incubated with biotinylated secondary antibody, followed by alkaline phosphatase-streptavidin and chromogen. The stained slides were evaluated by a pathologist to confirm staining specificity. The optimal working concentration for this antibody was determined to be 2.5 µg/mL.
Comment:	Target Species of Antibody: Human
Restrictions:	For Research Use only

Handling

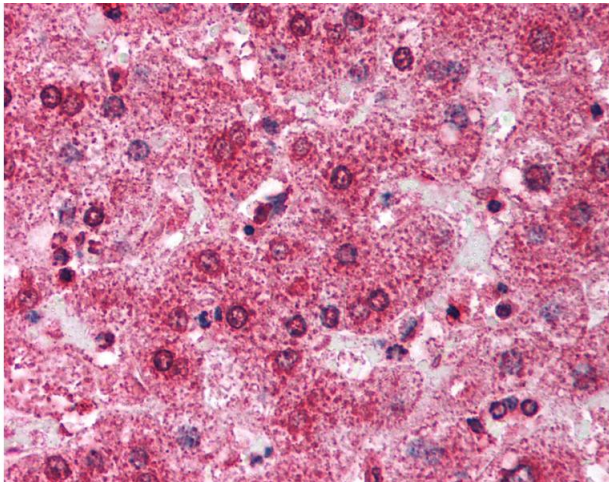
Format:	Lyophilized
Reconstitution:	After adding water, will consist of PBS buffer with 2 % sucrose
Concentration:	Lot specific
Buffer:	Lyophilized from PBS with 2 % sucrose
Handling Advice:	Avoid repeat freeze-thaw cycles.
Storage:	4 °C,-20 °C
Storage Comment:	Long term: -20°C, the use of 50% glycerol is recommended if storing aliquots in -20°C for long term use (up to 1 year)

Short term (less than 1 week): 4°C. Avoid freeze-thaw cycles.



Immunohistochemistry (Paraffin-embedded Sections)

Image 1. Human Liver (formalin-fixed, paraffin-embedded) stained with TRIM14 antibody ABIN213718 at 2.5 ug/ml followed by biotinylated goat anti-rabbit IgG secondary antibody ABIN481713, alkaline phosphatase-streptavidin and chromogen.



Immunohistochemistry

Image 2. Anti-TRIM14 antibody IHC of human liver. Immunohistochemistry of formalin-fixed, paraffin-embedded tissue after heat-induced antigen retrieval. Antibody concentration 5 ug/ml. This image was taken for the unconjugated form of this product. Other for ...