

Datasheet for ABIN6736438
anti-TRIM31 antibody (AA 117-166)

2 Images

[Go to Product page](#)

Overview

| | |
|----------------------|--|
| Quantity: | 100 µL |
| Target: | TRIM31 |
| Binding Specificity: | AA 117-166 |
| Reactivity: | Human, Cow, Monkey |
| Host: | Rabbit |
| Clonality: | Polyclonal |
| Conjugate: | This TRIM31 antibody is un-conjugated |
| Application: | Western Blotting (WB), Immunohistochemistry (IHC), Immunohistochemistry (Paraffin-embedded Sections) (IHC (p)) |

Product Details

| | |
|-----------------------|--|
| Brand: | IHC-plus™ |
| Immunogen: | Synthetic peptide located between aa117-166 of human TRIM31 (Q9BZY9, NP_008959). Percent identity by BLAST analysis: Human, Chimpanzee, Gorilla, Gibbon, Monkey (100%), Rabbit (92%), Mouse (85%). Type of Immunogen: Synthetic peptide |
| Specificity: | Human TRIM31 |
| Predicted Reactivity: | Percent identity by BLAST analysis: Human (100%) Rabbit (92%). |
| Purification: | Immunoaffinity purified |

Target Details

| | |
|-------------------|---|
| Target: | TRIM31 |
| Alternative Name: | TRIM31 / RNF (TRIM31 Products) |
| Background: | Name/Gene ID: TRIM31 Family: Tripartite Motif Synonyms: TRIM31, C6orf13, HCGI, RNF, Tripartite motif-containing 31, HCG1, Ring finger protein, Tripartite motif containing 31 |
| Gene ID: | 11074 |
| NCBI Accession: | NP_008959 |
| UniProt: | Q9BZY9 |

Application Details

| | |
|--------------------|--|
| Application Notes: | Approved: IHC, IHC-P (2.5 µg/mL), WB (0.2 - 1 µg/mL) Usage: Immunohistochemistry: This antibody was validated for use in immunohistochemistry on a panel of 21 formalin-fixed, paraffin-embedded (FFPE) human tissues after heat induced antigen retrieval in pH 6.0 citrate buffer. After incubation with the primary antibody, slides were incubated with biotinylated secondary antibody, followed by alkaline phosphatase-streptavidin and chromogen. The stained slides were evaluated by a pathologist to confirm staining specificity. The optimal working concentration for this antibody was determined to be 2.5 µg/mL. |
| Comment: | Target Species of Antibody: Human |
| Restrictions: | For Research Use only |

Handling

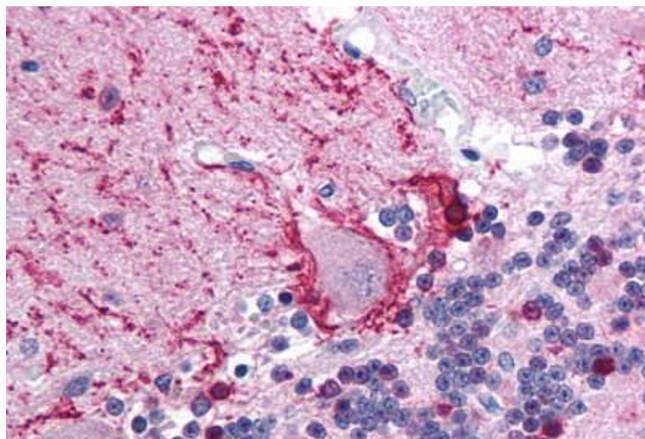
| | |
|------------------|---|
| Format: | Lyophilized |
| Reconstitution: | After adding water, will consist of PBS buffer with 2 % sucrose |
| Concentration: | Lot specific |
| Buffer: | Lyophilized from PBS with 2 % sucrose |
| Handling Advice: | Avoid repeat freeze-thaw cycles. |
| Storage: | 4 °C, -20 °C |

Handling

Storage Comment: Long term: -20°C, the use of 50% glycerol is recommended if storing aliquots in -20°C for long term use (up to 1 year)

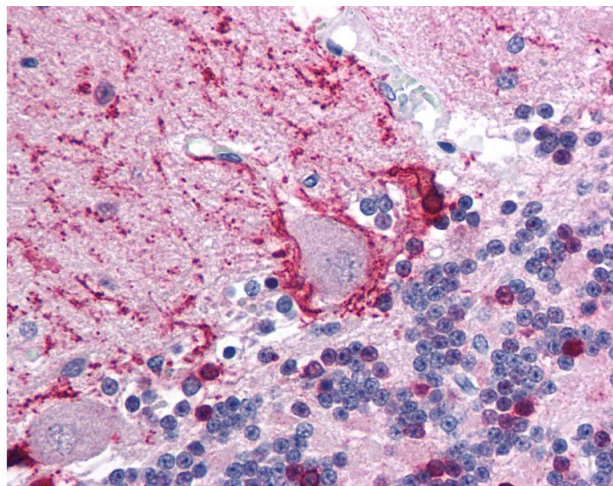
Short term (less than 1 week): 4°C. Avoid freeze-thaw cycles.

Images



Immunohistochemistry (Paraffin-embedded Sections)

Image 1. Human Brain, Cerebellum (formalin-fixed, paraffin-embedded) stained with TRIM31 antibody ABIN213720 at 2.5 ug/ml followed by biotinylated goat anti-rabbit IgG secondary antibody ABIN481713, alkaline phosphatase-streptavidin and chromogen.



Immunohistochemistry

Image 2. Anti-TRIM31 antibody IHC of human brain, cerebellum. Immunohistochemistry of formalin-fixed, paraffin-embedded tissue after heat-induced antigen retrieval. Antibody concentration 5 ug/ml. This image was taken for the unconjugated form of this product ...