



Datasheet for ABIN6736440
anti-TRIM34 antibody (AA 49-98)



[Go to Product page](#)

2 Images

Overview

Quantity:	100 µL
Target:	TRIM34
Binding Specificity:	AA 49-98
Reactivity:	Human
Host:	Rabbit
Clonality:	Polyclonal
Conjugate:	This TRIM34 antibody is un-conjugated
Application:	Western Blotting (WB), Immunohistochemistry (IHC), Immunohistochemistry (Paraffin-embedded Sections) (IHC (p))

Product Details

Brand:	IHC-plus™
Immunogen:	Synthetic peptide located between aa49-98 of human TRIM34 (Q9BYJ4-2, NP_569074). Percent identity by BLAST analysis: Human (100%), Baboon, Monkey (92%), Gibbon (91%), Marmoset (84%). Type of Immunogen: Synthetic peptide
Specificity:	Human TRIM34 / RNF21
Predicted Reactivity:	Percent identity by BLAST analysis: Human (100%).
Purification:	Immunoaffinity purified

Target Details

Target:	TRIM34
Alternative Name:	TRIM34 / RNF21 (TRIM34 Products)
Background:	Name/Gene ID: TRIM34 Family: Tripartite Motif Synonyms: TRIM34, IFP1, RING finger protein 21, RNF21, Tripartite motif containing 34, Tripartite motif-containing 34
Gene ID:	53840
NCBI Accession:	NP_569074
UniProt:	Q9BYJ4

Application Details

Application Notes:	Approved: IHC, IHC-P (2.5 µg/mL), WB (0.2 - 1 µg/mL) Usage: Immunohistochemistry: This antibody was validated for use in immunohistochemistry on a panel of 21 formalin-fixed, paraffin-embedded (FFPE) human tissues after heat induced antigen retrieval in pH 6.0 citrate buffer. After incubation with the primary antibody, slides were incubated with biotinylated secondary antibody, followed by alkaline phosphatase-streptavidin and chromogen. The stained slides were evaluated by a pathologist to confirm staining specificity. The optimal working concentration for this antibody was determined to be 2.5 µg/mL.
Comment:	Target Species of Antibody: Human
Restrictions:	For Research Use only

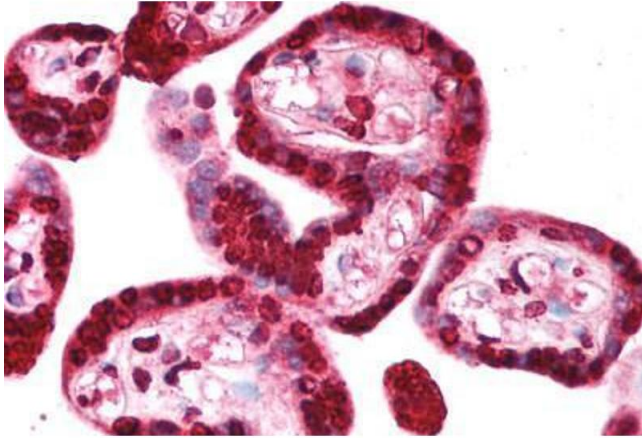
Handling

Format:	Lyophilized
Reconstitution:	After adding water, will consist of PBS buffer with 2 % sucrose
Concentration:	Lot specific
Buffer:	Lyophilized from PBS with 2 % sucrose
Handling Advice:	Avoid repeat freeze-thaw cycles.
Storage:	4 °C, -20 °C

Handling

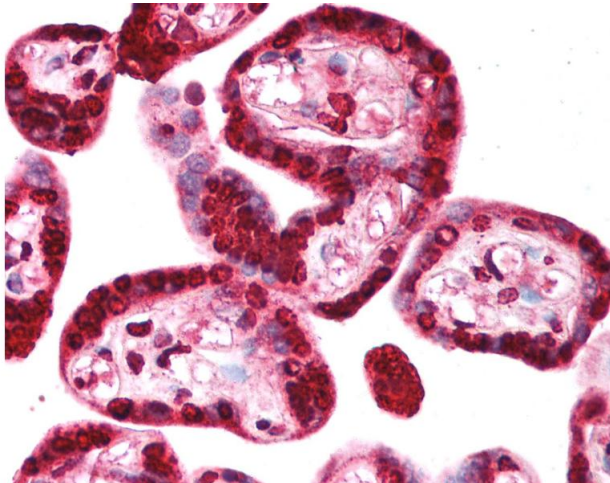
Storage Comment: Long term: -20°C, the use of 50% glycerol is recommended if storing aliquots in -20°C for long term use (up to 1 year)
Short term (less than 1 week): 4°C. Avoid freeze-thaw cycles.

Images



Immunohistochemistry (Paraffin-embedded Sections)

Image 1. Human Placenta (formalin-fixed, paraffin-embedded) stained with TRIM34 antibody ABIN213722 at 2.5 ug/ml followed by biotinylated goat anti-rabbit IgG secondary antibody ABIN481713, alkaline phosphatase-streptavidin and chromogen.



Immunohistochemistry

Image 2. Anti-TRIM34 / RNF21 antibody IHC of human placenta. Immunohistochemistry of formalin-fixed, paraffin-embedded tissue after heat-induced antigen retrieval. Antibody concentration 5 ug/ml. This image was taken for the unconjugated form of this product ...