

Datasheet for ABIN6736442
anti-TRIM38 antibody (C-Term)

3 Images

[Go to Product page](#)

Overview

Quantity:	100 µL
Target:	TRIM38
Binding Specificity:	C-Term
Reactivity:	Human, Monkey, Cow
Host:	Rabbit
Clonality:	Polyclonal
Conjugate:	This TRIM38 antibody is un-conjugated
Application:	Western Blotting (WB), Immunohistochemistry (IHC), Immunohistochemistry (Paraffin-embedded Sections) (IHC (p))

Product Details

Brand:	IHC-plus™
Immunogen:	Synthetic peptide from C-Terminus of human TRIM38 (O00635, NP_006346). Percent identity by BLAST analysis: Human, Chimpanzee, Gorilla, Monkey, Bovine (100%), Gibbon (92%). Type of Immunogen: Synthetic peptide
Specificity:	Human TRIM38
Predicted Reactivity:	Percent identity by BLAST analysis: Human (100%).
Purification:	Immunoaffinity purified

Target Details

Target:	TRIM38
Alternative Name:	TRIM38 (TRIM38 Products)
Background:	Name/Gene ID: TRIM38 Family: Tripartite Motif Synonyms: TRIM38, Tripartite motif containing 38, RING finger protein 15, RNF15, RORET, Tripartite motif-containing 38, Zinc finger protein RoRet
Gene ID:	10475
NCBI Accession:	NP_006346
UniProt:	O00635

Application Details

Application Notes:	Approved: IHC, IHC-P (2.5 µg/mL), WB (0.2 - 1 µg/mL) Usage: Immunohistochemistry: This antibody was validated for use in immunohistochemistry on a panel of 21 formalin-fixed, paraffin-embedded (FFPE) human tissues after heat induced antigen retrieval in pH 6.0 citrate buffer. After incubation with the primary antibody, slides were incubated with biotinylated secondary antibody, followed by alkaline phosphatase-streptavidin and chromogen. The stained slides were evaluated by a pathologist to confirm staining specificity. The optimal working concentration for this antibody was determined to be 2.5 µg/mL.
Comment:	Target Species of Antibody: Human
Restrictions:	For Research Use only

Handling

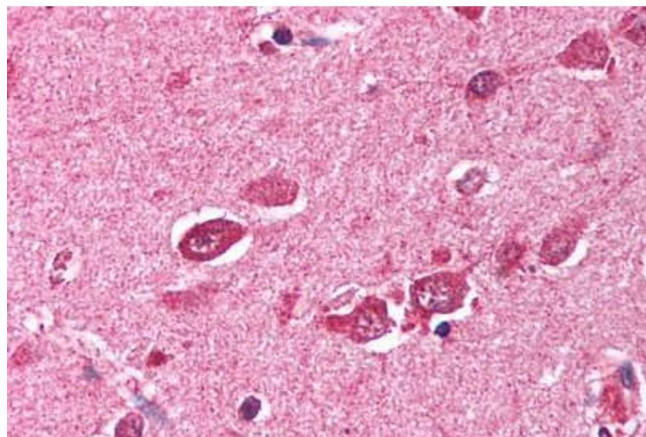
Format:	Lyophilized
Reconstitution:	After adding water, will consist of PBS buffer with 2 % sucrose
Concentration:	Lot specific
Buffer:	Lyophilized from PBS with 2 % sucrose
Handling Advice:	Avoid repeat freeze-thaw cycles.
Storage:	4 °C, -20 °C

Handling

Storage Comment: Long term: -20°C, the use of 50% glycerol is recommended if storing aliquots in -20°C for long term use (up to 1 year)

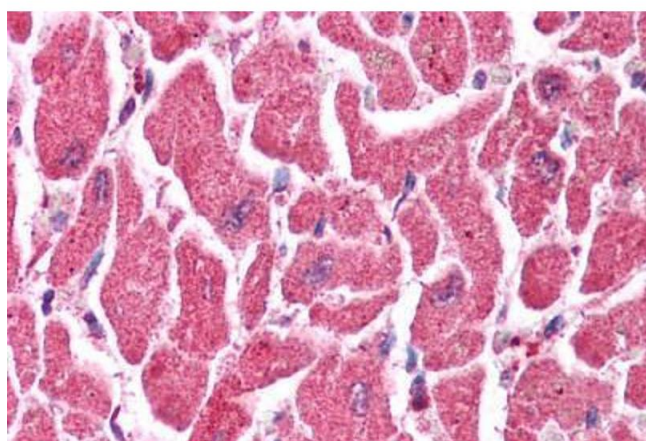
Short term (less than 1 week): 4°C. Avoid freeze-thaw cycles.

Images



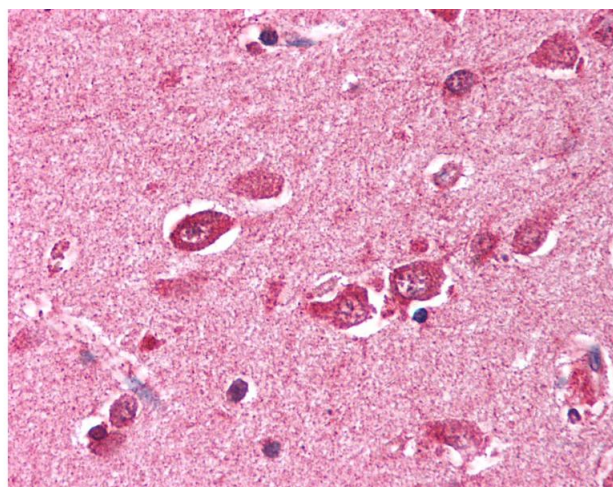
Immunohistochemistry

Image 1. Human Brain, Cortex (formalin-fixed, paraffin-embedded) stained with TRIM38 antibody ABIN213724 at 2.5 ug/ml followed by biotinylated goat anti-rabbit IgG secondary antibody ABIN481713, alkaline phosphatase-streptavidin and chromogen.



Immunohistochemistry (Paraffin-embedded Sections)

Image 2. Human Heart (formalin-fixed, paraffin-embedded) stained with TRIM38 antibody ABIN213724 at 2.5 ug/ml followed by biotinylated goat anti-rabbit IgG secondary antibody ABIN481713, alkaline phosphatase-streptavidin and chromogen.



Immunohistochemistry

Image 3. Anti-TRIM38 antibody IHC of human brain, cortex. Immunohistochemistry of formalin-fixed, paraffin-embedded tissue after heat-induced antigen retrieval. Antibody concentration 5 ug/ml. This image was taken for the unconjugated form of this product. O ...