



[Go to Product page](#)

Datasheet for ABIN6736443
anti-TRIM9 antibody (C-Term)

2 Images

Overview

Quantity:	100 µL
Target:	TRIM9
Binding Specificity:	C-Term
Reactivity:	Human
Host:	Rabbit
Clonality:	Polyclonal
Conjugate:	This TRIM9 antibody is un-conjugated
Application:	Western Blotting (WB), Immunohistochemistry (IHC), Immunohistochemistry (Paraffin-embedded Sections) (IHC (p))

Product Details

Brand:	IHC-plus™
Immunogen:	Synthetic peptide from C-Terminus of human TRIM9 (Q9C026-5, NP_443210). Percent identity by BLAST analysis: Human, Chimpanzee (100%), Rabbit (92%). Type of Immunogen: Synthetic peptide
Specificity:	Human TRIM9
Predicted Reactivity:	Percent identity by BLAST analysis: Human (100%) Rabbit (92%).
Purification:	Immunoaffinity purified

Target Details

Target:	TRIM9
Alternative Name:	SPRING / TRIM9 (TRIM9 Products)
Background:	Name/Gene ID: TRIM9 Family: Tripartite Motif Synonyms: TRIM9, KIAA0282, RING finger protein 91, SPRING, Tripartite motif containing 9, RNF91, Tripartite motif-containing 9
Gene ID:	114088
NCBI Accession:	NP_443210
UniProt:	Q9C026
Pathways:	Synaptic Vesicle Exocytosis

Application Details

Application Notes:	Approved: IHC, IHC-P (2.5 µg/mL), WB (0.2 - 1 µg/mL) Usage: Immunohistochemistry: This antibody was validated for use in immunohistochemistry on a panel of 21 formalin-fixed, paraffin-embedded (FFPE) human tissues after heat induced antigen retrieval in pH 6.0 citrate buffer. After incubation with the primary antibody, slides were incubated with biotinylated secondary antibody, followed by alkaline phosphatase-streptavidin and chromogen. The stained slides were evaluated by a pathologist to confirm staining specificity. The optimal working concentration for this antibody was determined to be 2.5 µg/mL.
Comment:	Target Species of Antibody: Human
Restrictions:	For Research Use only

Handling

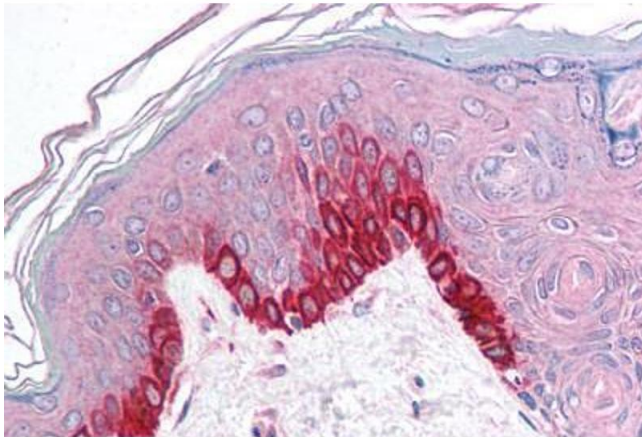
Format:	Lyophilized
Reconstitution:	After adding water, will consist of PBS buffer with 2 % sucrose
Concentration:	Lot specific
Buffer:	Lyophilized from PBS with 2 % sucrose
Handling Advice:	Avoid repeat freeze-thaw cycles.

Handling

Storage: 4 °C, -20 °C

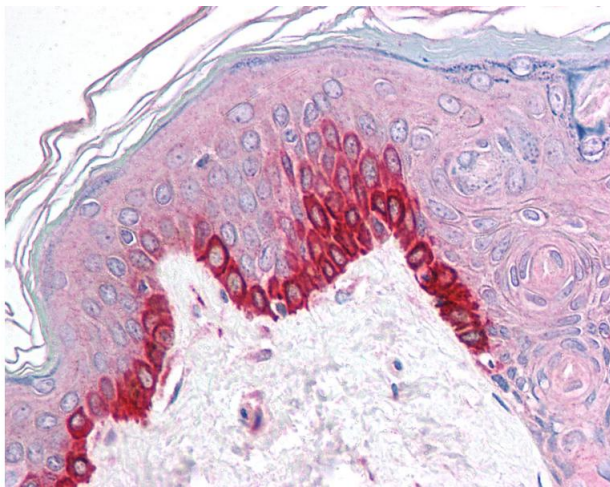
Storage Comment: Long term: -20°C, the use of 50% glycerol is recommended if storing aliquots in -20°C for long term use (up to 1 year)
Short term (less than 1 week): 4°C. Avoid freeze-thaw cycles.

Images



Immunohistochemistry

Image 1. Human Skin (formalin-fixed, paraffin-embedded) stained with TRIM9 antibody ABIN213728 at 2.5 ug/ml followed by biotinylated goat anti-rabbit IgG secondary antibody ABIN481713, alkaline phosphatase-streptavidin and chromogen.



Immunohistochemistry

Image 2. Anti-TRIM9 antibody IHC of human skin. Immunohistochemistry of formalin-fixed, paraffin-embedded tissue after heat-induced antigen retrieval. Antibody concentration 5 ug/ml. This image was taken for the unconjugated form of this product. Other forms ...