

Datasheet for ABIN6736603
anti-RECQL5 antibody (AA 431-480)



[Go to Product page](#)

1 Image

Overview

Quantity:	100 µL
Target:	RECQL5
Binding Specificity:	AA 431-480
Reactivity:	Human, Mouse, Rat, Cow, Horse, Rabbit, Xenopus laevis
Host:	Rabbit
Clonality:	Polyclonal
Conjugate:	This RECQL5 antibody is un-conjugated
Application:	Western Blotting (WB)

Product Details

Immunogen:	Synthetic peptide located between aa431-480 of human RECQL5 (Q6P4G0, NP_004250). Percent identity by BLAST analysis: Human, Xenopus (100%), Gorilla, Orangutan, Gibbon, Monkey, Marmoset (92%), Mouse, Rat, Elephant, Panda, Bovine, Bat, Rabbit, Horse (85%). Type of Immunogen: Synthetic peptide
Isotype:	IgG
Specificity:	Human RECQL5
Predicted Reactivity:	Percent identity by BLAST analysis: Human (100%) Mouse, Rat, Bovine, Rabbit, Horse (85%).
Purification:	Immunoaffinity purified

Target Details

Target:	RECQL5
Alternative Name:	RECQ5 / RECQL5 (RECQL5 Products)
Background:	Name/Gene ID: RECQL5 Synonyms: RECQL5, ATP-dependent DNA helicase Q5, DNA helicase, RecQ-like type 5, RecQ protein-like 5, RECQ5
Gene ID:	9400
NCBI Accession:	NP_004250
UniProt:	O94762

Application Details

Application Notes:	Approved: WB (0.2 - 1 µg/mL)
Comment:	Target Species of Antibody: Human
Restrictions:	For Research Use only

Handling

Format:	Lyophilized
Reconstitution:	After adding water, will consist of PBS buffer with 2 % sucrose
Concentration:	Lot specific
Buffer:	Lyophilized from PBS with 2 % sucrose
Storage:	4 °C, -20 °C
Storage Comment:	Long term: -20°C, the use of 50% glycerol is recommended if storing aliquots in -20°C for long term use (up to 1 year) Short term (less than 1 week): 4°C. Avoid freeze-thaw cycles.

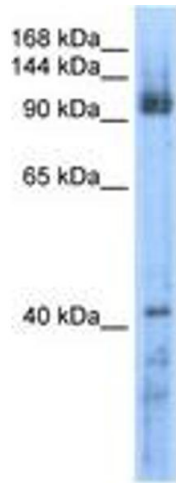


Image 1.