



[Go to Product page](#)

Datasheet for ABIN6736609  
**anti-ELF3 antibody (AA 201-250)**

1 Image

Overview

Quantity:	100 µL
Target:	ELF3
Binding Specificity:	AA 201-250
Reactivity:	Mouse, Dog
Host:	Rabbit
Clonality:	Polyclonal
Conjugate:	This ELF3 antibody is un-conjugated
Application:	Western Blotting (WB)

Product Details

Immunogen:	Synthetic peptide located between aa201-250 of mouse Elf3 (Q3UPW2-2, NP_031947). Percent identity by BLAST analysis: Mouse (100%), Galago, Rat (92%), Monkey, Marmoset, Dog, Horse (85%), Elephant (84%).  Type of Immunogen: Synthetic peptide
Isotype:	IgG
Specificity:	Mouse ELF3
Predicted Reactivity:	Percent identity by BLAST analysis: Mouse (100%) Rat (92%) Dog (85%).
Purification:	Immunoaffinity purified

## Target Details

---

Target: ELF3

Alternative Name: ELF3 / ESE1 ([ELF3 Products](#))

Background: Name/Gene ID: ELF3

Synonyms: ELF3, ERT, ESE-1, ESE1, JEN, ESX, E74-like factor 3, EPR-1

Gene ID: 1999

NCBI Accession: [NP\\_031947](#)

UniProt: [P78545](#)

## Application Details

---

Application Notes: Approved: WB (0.2 - 1 µg/mL)

Comment: Target Species of Antibody: Mouse

Restrictions: For Research Use only

## Handling

---

Format: Lyophilized

Reconstitution: After adding water, will consist of PBS buffer with 2 % sucrose

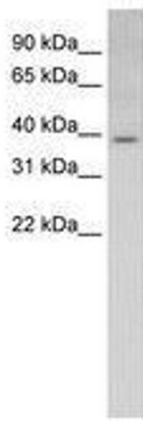
Concentration: Lot specific

Buffer: Lyophilized from PBS with 2 % sucrose

Storage: 4 °C, -20 °C

Storage Comment: Long term: -20°C, the use of 50% glycerol is recommended if storing aliquots in -20°C for long term use (up to 1 year)

Short term (less than 1 week): 4°C. Avoid freeze-thaw cycles.



**Image 1.**