



Datasheet for ABIN6736611  
**anti-SLC12A1 antibody (AA 351-400)**



[Go to Product page](#)

2 Images

Overview

Quantity:	100 µL
Target:	SLC12A1
Binding Specificity:	AA 351-400
Reactivity:	Rat, Human, Mouse, Monkey, Rabbit, Dog, Pig, Cow, Horse, Bat
Host:	Rabbit
Clonality:	Polyclonal
Conjugate:	This SLC12A1 antibody is un-conjugated
Application:	Western Blotting (WB), Immunohistochemistry (IHC)

Product Details

Immunogen:	Synthetic peptide located between aa351-400 of human SLC12A1 (Q8IUN5). Percent identity by BLAST analysis: Human, Chimpanzee, Orangutan, Gibbon, Monkey, Galago, Marmoset, Mouse, Rat, Ferret, Panda, Dog, Bovine, Bat, Rabbit, Horse, Pig, Opossum, Platypus (100%), Gorilla, Elephant, Guinea pig, Zebra finch, Chicken (92%), Turkey (85%).  Type of Immunogen: Synthetic peptide
Isotype:	IgG
Specificity:	Human SLC12A1
Predicted Reactivity:	Percent identity by BLAST analysis: Human, Mouse, Rat, Dog, Bovine, Horse, Pig (100%) Guinea pig, Chicken (92%).
Purification:	Immunoaffinity purified

## Target Details

---

Target:	SLC12A1
Alternative Name:	SLC12A1 / NKCC2 ( <a href="#">SLC12A1 Products</a> )
Background:	Name/Gene ID: SLC12A1 Subfamily: Cation:chloride symporter Family: Transporter  Synonyms: SLC12A1, BSC1, MBSC1, Na-K-2Cl cotransporter, NKCC2A variant A, RBSC, NKCC2
Gene ID:	6557
UniProt:	<a href="#">Q13621</a>

## Application Details

---

Application Notes:	Approved: IHC, WB (0.2 - 1 µg/mL)  Not recommended for: IHC-P
Comment:	Target Species of Antibody: Human
Restrictions:	For Research Use only

## Handling

---

Format:	Lyophilized
Reconstitution:	Distilled water
Concentration:	Lot specific
Buffer:	Lyophilized from PBS with 2 % sucrose
Handling Advice:	Avoid repeated freezing and thawing.
Storage:	4 °C,-20 °C
Storage Comment:	Long term: -20°C, the use of 50% glycerol is recommended if storing aliquots in -20°C for long term use (up to 1 year) Short term (less than 1 week): 4°C. Avoid freeze-thaw cycles.

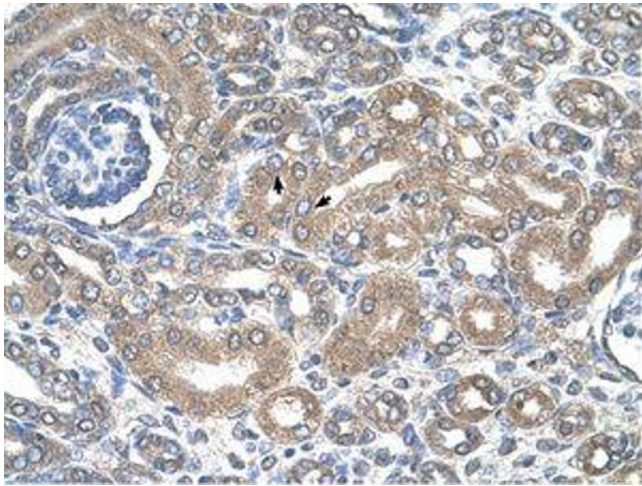


Image 1.

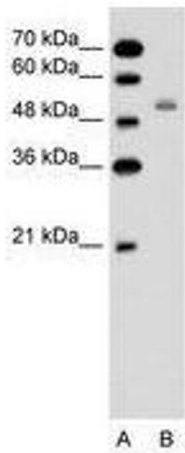


Image 2.