



[Go to Product page](#)

Datasheet for ABIN6736617
anti-RAGE antibody (AA 251-300)

2 Images

Overview

Quantity:	100 µL
Target:	RAGE (AGER)
Binding Specificity:	AA 251-300
Reactivity:	Human
Host:	Rabbit
Clonality:	Polyclonal
Conjugate:	This RAGE antibody is un-conjugated
Application:	Western Blotting (WB)

Product Details

Immunogen:	Synthetic peptide located between aa251-300 of human AGER (A2BF17, NP_751947). Percent identity by BLAST analysis: Human, Marmoset (100%), Monkey (92%). Type of Immunogen: Synthetic peptide
Isotype:	IgG
Specificity:	Human AGER
Predicted Reactivity:	Percent identity by BLAST analysis: Human (100%).
Purification:	Immunoaffinity purified

Target Details

Target:	RAGE (AGER)
---------	-------------

Target Details

Alternative Name:	AGER / RAGE (AGER Products)
Background:	Name/Gene ID: AGER Synonyms: AGER, RAGE, RAGE isoform NtRAGE-delta, RAGE isoform sRAGE-delta
Gene ID:	177
NCBI Accession:	NP_751947
UniProt:	Q15109
Pathways:	Carbohydrate Homeostasis , Toll-Like Receptors Cascades , Smooth Muscle Cell Migration , S100 Proteins

Application Details

Application Notes:	Approved: WB (0.2 - 1 µg/mL) Not recommended for: IHC-P
Comment:	Target Species of Antibody: Human
Restrictions:	For Research Use only

Handling

Format:	Lyophilized
Reconstitution:	After adding water, will consist of PBS buffer with 2 % sucrose
Concentration:	Lot specific
Buffer:	Lyophilized from PBS with 2 % sucrose
Storage:	4 °C,-20 °C
Storage Comment:	Long term: -20°C, the use of 50% glycerol is recommended if storing aliquots in -20°C for long term use (up to 1 year) Short term (less than 1 week): 4°C. Avoid freeze-thaw cycles.

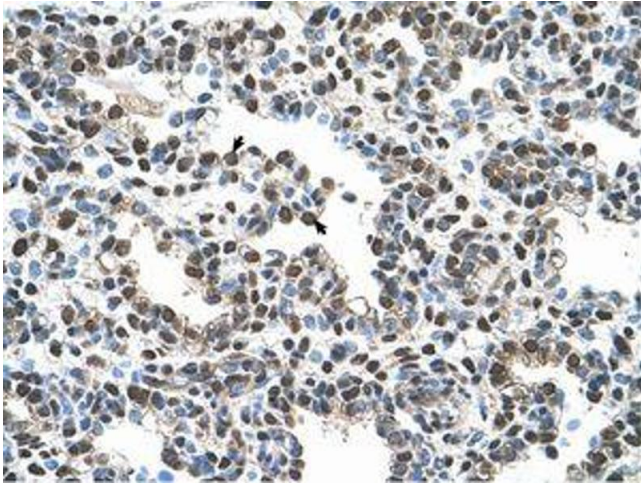


Image 1.

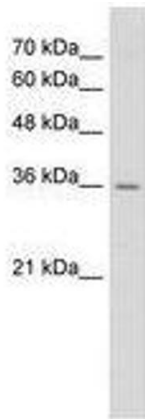


Image 2.