

Datasheet for ABIN6736620  
**anti-HMGCL antibody (C-Term)**[Go to Product page](#)

## 1 Image

## Overview

|                      |   |
|----------------------|---|
| Quantity:            | 100 µL  |
| Target:              | HMGCL   |
| Binding Specificity: | C-Term  |
| Reactivity:          | Human, Mouse, Rat, Dog, Horse, Cow, Zebrafish (Danio rerio), Bat, Hamster |
| Host:                | Rabbit  |
| Clonality:           | Polyclonal  |
| Conjugate:           | This HMGCL antibody is un-conjugated                                      |
| Application:         | Western Blotting (WB)   |

## Product Details

|                       |   |
|-----------------------|---|
| Immunogen:            | Synthetic peptide from C-Terminus of human HMGCL (P35914, NP_000182). Percent identity by BLAST analysis: Human, Chimpanzee, Gorilla, Orangutan, Gibbon, Monkey, Mouse, Rat, Hamster, Elephant, Panda, Dog, Bat, Horse (100%), Galago, Marmoset, Rabbit, Guinea pig (92%), Salmon, Stickleback (91%), Bovine (85%), Turkey, Zebra finch, Sparrow, Chicken, Zebrafish (84%), Pufferfish (83%).<br><br>Type of Immunogen: Synthetic peptide |
| Isotype:              | IgG   |
| Specificity:          | Human HMGCL   |
| Predicted Reactivity: | Percent identity by BLAST analysis: Human, Mouse, Rat (100%) Bovine (85%) Chicken, Zebrafish (84%).   |

## Product Details

Purification: Immunoaffinity purified

## Target Details

Target: HMGCL

Alternative Name: HMGCL ([HMGCL Products](#))

Background: Name/Gene ID: HMGCL

Synonyms: HMGCL, HL, HMG-CoA lyase, Hydroxymethylglutaricaciduria

Gene ID: 3155

NCBI Accession: [NP\\_000182](#)

UniProt: [P35914](#)

## Application Details

Application Notes: Approved: WB (0.2 - 1 µg/mL)

Comment: Target Species of Antibody: Human

Restrictions: For Research Use only

## Handling

Format: Lyophilized

Reconstitution: After adding water, will consist of PBS buffer with 2 % sucrose

Concentration: Lot specific

Buffer: Lyophilized from PBS with 2 % sucrose

Storage: 4 °C, -20 °C

Storage Comment: Long term: -20°C, the use of 50% glycerol is recommended if storing aliquots in -20°C for long term use (up to 1 year)

Short term (less than 1 week): 4°C. Avoid freeze-thaw cycles.

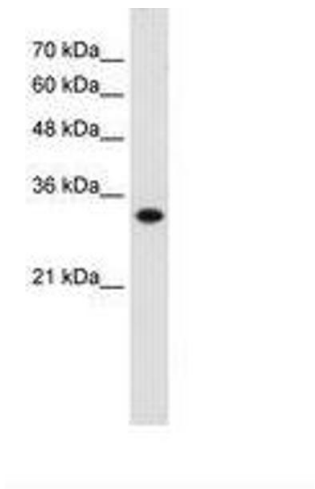


Image 1.