

Datasheet for ABIN6736631  
**anti-MAGEA8 antibody (AA 51-100)**



[Go to Product page](#)

2 Images

## Overview

Quantity:	100 µL
Target:	MAGEA8
Binding Specificity:	AA 51-100
Reactivity:	Human
Host:	Rabbit
Clonality:	Polyclonal
Conjugate:	This MAGEA8 antibody is un-conjugated
Application:	Western Blotting (WB), Immunohistochemistry (IHC), Immunohistochemistry (Paraffin-embedded Sections) (IHC (p))

## Product Details

Immunogen:	Synthetic peptide located between aa51-100 of human MAGEA8 (Q9BUN9, NP_005355). Percent identity by BLAST analysis: Human, Gorilla (100%), Gibbon (92%).  Type of Immunogen: Synthetic peptide
Isotype:	IgG
Specificity:	Human MAGEA8
Predicted Reactivity:	Percent identity by BLAST analysis: Human (100%).
Purification:	Immunoaffinity purified

## Target Details

---

Target:	MAGEA8
Alternative Name:	MAGEA8 ( <a href="#">MAGEA8 Products</a> )
Background:	Name/Gene ID: MAGEA8  Synonyms: MAGEA8, Cancer/testis antigen 1.8, CT1.8, MAGE-8 antigen, Melanoma antigen family A, 8, Melanoma-associated antigen 8, MAGE8
Gene ID:	4107
NCBI Accession:	<a href="#">NP_005355</a>
UniProt:	<a href="#">P43361</a>

## Application Details

---

Application Notes:	Approved: IHC, IHC-P, WB (0.2 - 1 µg/mL)
Comment:	Target Species of Antibody: Human
Restrictions:	For Research Use only

## Handling

---

Format:	Lyophilized
Reconstitution:	After adding water, will consist of PBS buffer with 2 % sucrose
Concentration:	Lot specific
Buffer:	Lyophilized from PBS with 2 % sucrose
Storage:	4 °C, -20 °C
Storage Comment:	Long term: -20°C, the use of 50% glycerol is recommended if storing aliquots in -20°C for long term use (up to 1 year) Short term (less than 1 week): 4°C. Avoid freeze-thaw cycles.

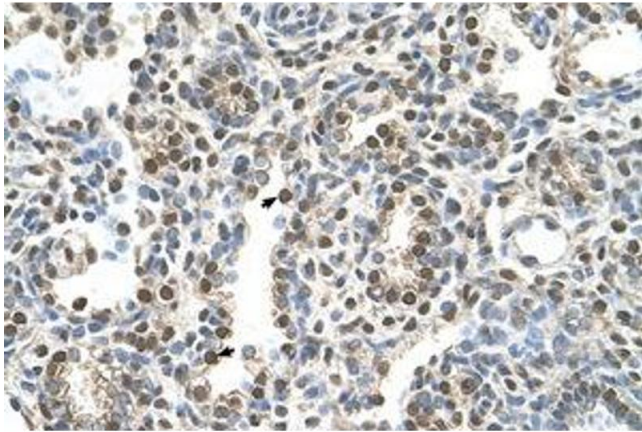


Image 1.



Image 2.