



[Go to Product page](#)

Datasheet for ABIN6736635  
**anti-GPR161 antibody (AA 201-250)**

2 Images

Overview

Quantity:	100 µL
Target:	GPR161
Binding Specificity:	AA 201-250
Reactivity:	Human, Mouse, Cow, Pig, Monkey
Host:	Rabbit
Clonality:	Polyclonal
Conjugate:	This GPR161 antibody is un-conjugated
Application:	Western Blotting (WB), Immunohistochemistry (IHC), Immunohistochemistry (Paraffin-embedded Sections) (IHC (p))

Product Details

Immunogen:	Synthetic peptide located between aa201-250 of human GPR161. Percent identity by BLAST analysis: Human, Chimpanzee, Gorilla, Gibbon, Monkey, Marmoset, Bovine (100%), Galago, Elephant, Dog, Rabbit, Horse, Guinea pig (92%), Mouse, Bat, Pig, Opossum, Turkey, Chicken (85%).  Type of Immunogen: Synthetic peptide
Isotype:	IgG
Specificity:	Human GPR161
Predicted Reactivity:	Percent identity by BLAST analysis: Human, Bovine (100%) Dog, Rabbit, Horse, Guinea pig (92%) Mouse, Pig, Chicken (85%).

## Product Details

---

Purification: Immunoaffinity purified

## Target Details

---

Target: GPR161

Alternative Name: GPR161 ([GPR161 Products](#))

Background: Name/Gene ID: GPR161  
Subfamily: Orphan-U  
Family: GPCR

Synonyms: GPR161, G-protein coupled receptor 161, G protein-coupled receptor 161, G-protein coupled receptor RE2, RE2

Gene ID: 23432

UniProt: [Q8N6U8](#)

Pathways: [cAMP Metabolic Process](#)

## Application Details

---

Application Notes: Approved: IHC, IHC-P, WB (0.2 - 1 µg/mL)

Comment: Target Species of Antibody: Human

Restrictions: For Research Use only

## Handling

---

Format: Lyophilized

Reconstitution: After adding water, will consist of PBS buffer with 2 % sucrose

Concentration: Lot specific

Buffer: Lyophilized from PBS with 2 % sucrose

Storage: 4 °C, -20 °C

Storage Comment: Long term: -20°C, the use of 50% glycerol is recommended if storing aliquots in -20°C for long term use (up to 1 year)  
Short term (less than 1 week): 4°C. Avoid freeze-thaw cycles.

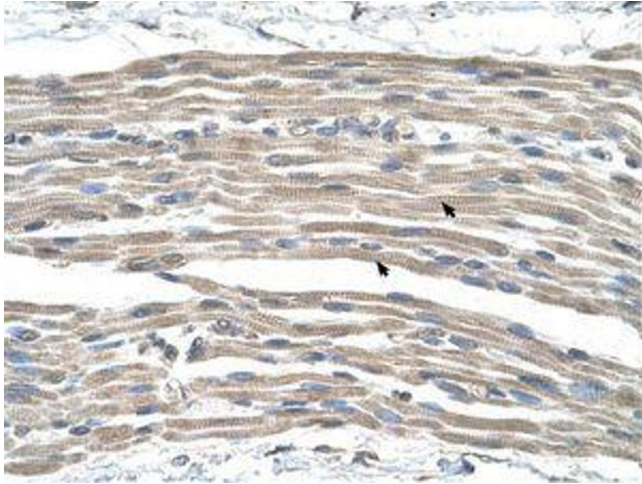


Image 1.



Image 2.