

Datasheet for ABIN6736644
anti-C5ORF4 antibody (N-Term)



[Go to Product page](#)

2 Images

Overview

Quantity:	100 µL
Target:	C5ORF4 (FAXDC2)
Binding Specificity:	N-Term
Reactivity:	Human, Dog, Horse, Pig, Bat
Host:	Rabbit
Clonality:	Polyclonal
Conjugate:	This C5ORF4 antibody is un-conjugated
Application:	Western Blotting (WB), Immunohistochemistry (IHC), Immunohistochemistry (Paraffin-embedded Sections) (IHC (p))

Product Details

Immunogen:	Synthetic peptide from N-Terminus of human FAXDC2 (Q96IV6, NP_115761). Percent identity by BLAST analysis: Human, Chimpanzee, Gorilla, Gibbon, Monkey, Elephant, Panda, Dog, Bat, Horse, Pig (100%), Marmoset, Rabbit, Opossum (92%), Guinea pig (91%), Platypus (85%). Type of Immunogen: Synthetic peptide
Isotype:	IgG
Specificity:	Human C5orf4
Predicted Reactivity:	Percent identity by BLAST analysis: Human, Horse (100%) Rabbit (92%).
Purification:	Immunoaffinity purified

Target Details

Target:	C5ORF4 (FAXDC2)
Alternative Name:	FAXDC2 / C5orf4 (FAXDC2 Products)
Background:	Name/Gene ID: FAXDC2 Synonyms: FAXDC2, C5orf4
Gene ID:	10826
NCBI Accession:	NP_115761
UniProt:	Q96IV6

Application Details

Application Notes:	Approved: IHC, IHC-P, WB (0.2 - 1 µg/mL)
Comment:	Target Species of Antibody: Human
Restrictions:	For Research Use only

Handling

Format:	Lyophilized
Reconstitution:	After adding water, will consist of PBS buffer with 2 % sucrose
Concentration:	Lot specific
Buffer:	Lyophilized from PBS with 2 % sucrose
Storage:	4 °C,-20 °C
Storage Comment:	Long term: -20°C, the use of 50% glycerol is recommended if storing aliquots in -20°C for long term use (up to 1 year) Short term (less than 1 week): 4°C. Avoid freeze-thaw cycles.

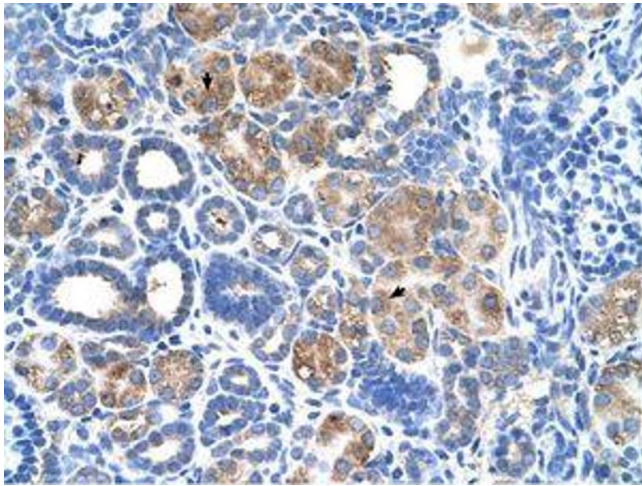


Image 1.

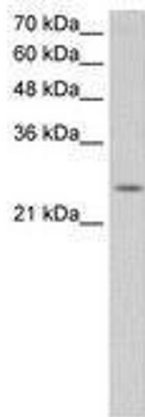


Image 2.