



Datasheet for ABIN6736649  
**anti-RAPSN antibody (N-Term)**



[Go to Product page](#)

1 Image

Overview

Quantity:	100 µL
Target:	RAPSN
Binding Specificity:	N-Term
Reactivity:	Human, Mouse, Rat, Dog, Rabbit, Cow, Guinea Pig, Zebrafish (Danio rerio), Horse, Monkey
Host:	Rabbit
Clonality:	Polyclonal
Conjugate:	This RAPSN antibody is un-conjugated
Application:	Western Blotting (WB)

Product Details

Immunogen:	Synthetic peptide from N-Terminus of human RAPSN (Q13702-2, NP_116034). Percent identity by BLAST analysis: Human, Chimpanzee, Gorilla, Gibbon, Monkey, Galago, Marmoset, Mouse, Rat, Elephant, Panda, Dog, Bovine, Rabbit, Horse, Guinea pig, Platypus, Lizard, Stickleback, Zebrafish (100%), Opossum, Turkey, Zebra finch, Chicken, Xenopus (92%).  Type of Immunogen: Synthetic peptide
Isotype:	IgG
Specificity:	Human RAPSN / RAPSYN
Predicted Reactivity:	Percent identity by BLAST analysis: Human, Mouse, Rat, Dog, Bovine, Rabbit, Horse, Zebrafish (100%) Chicken, Xenopus (92%).
Purification:	Immunoaffinity purified

## Target Details

---

Target:	RAPSN
Alternative Name:	RAPSYN ( <a href="#">RAPSN Products</a> )
Background:	Name/Gene ID: RAPSN  Synonyms: RAPSN, 43 kDa postsynaptic protein, CMS1D, CMS1E, RING finger protein 205, RAPSYN, RNF205, 43 kDa receptor-associated protein of the synapse, acetylcholine receptor-associated 43 kda protein
Gene ID:	5913
NCBI Accession:	<a href="#">NP_116034</a>

## Application Details

---

Application Notes:	Approved: WB (0.2 - 1 µg/mL)
Comment:	Target Species of Antibody: Human
Restrictions:	For Research Use only

## Handling

---

Format:	Lyophilized
Reconstitution:	After adding water, will consist of PBS buffer with 2 % sucrose
Concentration:	Lot specific
Buffer:	Lyophilized from PBS with 2 % sucrose
Handling Advice:	Avoid repeated freezing and thawing.
Storage:	4 °C, -20 °C
Storage Comment:	Long term: -20°C, the use of 50% glycerol is recommended if storing aliquots in -20°C for long term use (up to 1 year) Short term (less than 1 week): 4°C. Avoid freeze-thaw cycles.

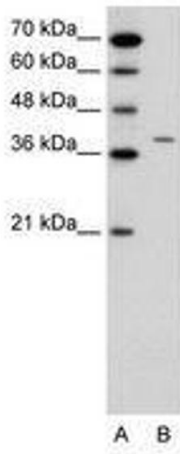


Image 1.