



[Go to Product page](#)

Datasheet for ABIN6736653

anti-TRIM42 antibody (AA 601-650)

1 Image

Overview

Quantity:	100 µL
Target:	TRIM42
Binding Specificity:	AA 601-650
Reactivity:	Human, Dog, Mouse, Rat, Cow, Guinea Pig, Horse, Rabbit, Bat, Monkey, Pig
Host:	Rabbit
Clonality:	Polyclonal
Conjugate:	This TRIM42 antibody is un-conjugated
Application:	Western Blotting (WB)

Product Details

Immunogen:	Synthetic peptide located between aa601-650 of human TRIM42 (Q8IWZ5, NP_689829). Percent identity by BLAST analysis: Human, Chimpanzee, Gorilla, Gibbon, Monkey, Galago, Marmoset, Mouse, Rat, Elephant, Panda, Dog, Bovine, Bat, Rabbit, Horse, Pig, Guinea pig (100%), Opossum, Platypus (92%). Type of Immunogen: Synthetic peptide
Isotype:	IgG
Specificity:	Human TRIM42
Predicted Reactivity:	Percent identity by BLAST analysis: Human, Rat, Dog, Bovine, Pig, Guinea pig (100%).
Purification:	Immunoaffinity purified

Target Details

Target:	TRIM42
Alternative Name:	TRIM42 (TRIM42 Products)
Background:	Name/Gene ID: TRIM42 Synonyms: TRIM42, PPP1R40, Tripartite motif containing 42, Tripartite motif-containing 42
Gene ID:	287015
NCBI Accession:	NP_689829
UniProt:	Q8IWZ5

Application Details

Application Notes:	Approved: WB (0.2 - 1 µg/mL)
Comment:	Target Species of Antibody: Human
Restrictions:	For Research Use only

Handling

Format:	Lyophilized
Reconstitution:	After adding water, will consist of PBS buffer with 2 % sucrose
Concentration:	Lot specific
Buffer:	Lyophilized from PBS with 2 % sucrose
Storage:	4 °C,-20 °C
Storage Comment:	Long term: -20°C, the use of 50% glycerol is recommended if storing aliquots in -20°C for long term use (up to 1 year) Short term (less than 1 week): 4°C. Avoid freeze-thaw cycles.

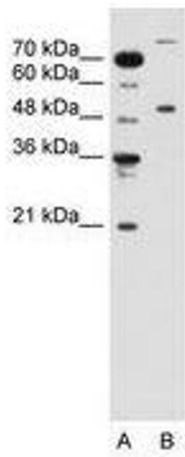


Image 1.