



Datasheet for ABIN6736656
anti-SLC7A4 antibody (AA 281-330)



[Go to Product page](#)

1 Image

Overview

Quantity:	100 µL
Target:	SLC7A4
Binding Specificity:	AA 281-330
Reactivity:	Human, Rat, Cow, Dog, Guinea Pig, Horse, Mouse, Rabbit, Monkey, Pig
Host:	Rabbit
Clonality:	Polyclonal
Conjugate:	This SLC7A4 antibody is un-conjugated
Application:	Western Blotting (WB)

Product Details

Immunogen:	Synthetic peptide located between aa281-330 of human SLC7A4 (O43246, NP_004164). Percent identity by BLAST analysis: Human, Chimpanzee, Gorilla, Monkey, Marmoset, Mouse, Rat, Elephant, Rabbit, Horse, Guinea pig, Turkey, Zebra finch (100%), Panda, Opossum (92%), Bovine (85%), Dog, Pig (84%), Stickleback (83%). Type of Immunogen: Synthetic peptide
Isotype:	IgG
Specificity:	Human SLC7A4
Predicted Reactivity:	Percent identity by BLAST analysis: Mouse, Rat, Guinea pig (100%) Bovine (85%) Dog, Pig (84%).
Purification:	Immunoaffinity purified

Target Details

Target:	SLC7A4
Alternative Name:	SLC7A4 (SLC7A4 Products)
Background:	Name/Gene ID: SLC7A4 Subfamily: Cationic amino acid transporter Family: Transporter Synonyms: SLC7A4, CAT4, CAT-4, HCAT3, VH 3 family, VH, Ig heavy chain variable region
Gene ID:	6545
NCBI Accession:	NP_004164
UniProt:	O43246

Application Details

Application Notes:	Approved: WB (0.12 µg/mL)
Comment:	Target Species of Antibody: Human
Restrictions:	For Research Use only

Handling

Format:	Lyophilized
Reconstitution:	After adding water, will consist of PBS buffer with 2 % sucrose
Concentration:	Lot specific
Buffer:	Lyophilized from PBS with 2 % sucrose
Storage:	4 °C, -20 °C
Storage Comment:	Long term: -20°C, the use of 50% glycerol is recommended if storing aliquots in -20°C for long term use (up to 1 year) Short term (less than 1 week): 4°C. Avoid freeze-thaw cycles.

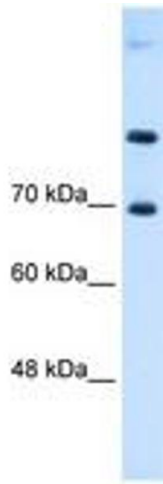


Image 1.