



Datasheet for ABIN6736660
anti-SLC25A38 antibody (AA 101-150)



[Go to Product page](#)

2 Images

Overview

Quantity:	100 µL
Target:	SLC25A38
Binding Specificity:	AA 101-150
Reactivity:	Human, Mouse, Rat, Dog, Cow, Sheep, Horse, Rabbit, Hamster, Monkey
Host:	Rabbit
Clonality:	Polyclonal
Conjugate:	This SLC25A38 antibody is un-conjugated
Application:	Western Blotting (WB), Immunohistochemistry (IHC), Immunohistochemistry (Paraffin-embedded Sections) (IHC (p))

Product Details

Immunogen:	Synthetic peptide located between aa101-150 of human SLC25A38 (Q96DW6, NP_060345). Percent identity by BLAST analysis: Human, Chimpanzee, Gorilla, Gibbon, Galago, Marmoset, Mouse, Rat, Sheep, Hamster, Elephant, Dog, Bovine, Rabbit, Horse (100%), Bat, Guinea pig (92%). Type of Immunogen: Synthetic peptide
Isotype:	IgG
Specificity:	Human SLC25A38
Predicted Reactivity:	Percent identity by BLAST analysis: Human, Mouse, Rat, Dog, Bovine, Rabbit (100%) Guinea pig (92%).

Product Details

Purification: Immunoaffinity purified

Target Details

Target: SLC25A38

Alternative Name: SLC25A38 ([SLC25A38 Products](#))

Background: Name/Gene ID: SLC25A38

Synonyms: SLC25A38

Gene ID: 54977

NCBI Accession: [NP_060345](#)

UniProt: [Q96DW6](#)

Application Details

Application Notes: Approved: IHC, IHC-P, WB (0.2 - 1 µg/mL)

Comment: Target Species of Antibody: Human

Restrictions: For Research Use only

Handling

Format: Lyophilized

Reconstitution: After adding water, will consist of PBS buffer with 2 % sucrose

Concentration: Lot specific

Buffer: Lyophilized from PBS with 2 % sucrose

Storage: 4 °C, -20 °C

Storage Comment: Long term: -20°C, the use of 50% glycerol is recommended if storing aliquots in -20°C for long term use (up to 1 year)

Short term (less than 1 week): 4°C. Avoid freeze-thaw cycles.

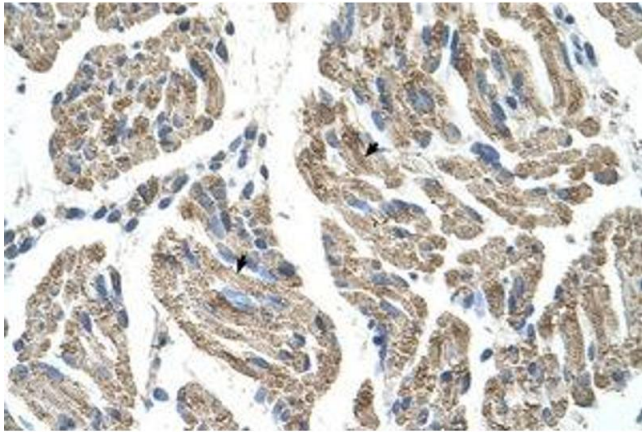


Image 1.

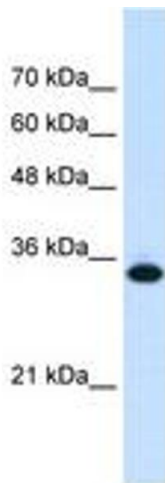


Image 2.