



Datasheet for ABIN6736664
anti-SLC37A3 antibody (AA 224-273)



[Go to Product page](#)

2 Images

Overview

| | |
|----------------------|--|
| Quantity: | 100 µL |
| Target: | SLC37A3 |
| Binding Specificity: | AA 224-273 |
| Reactivity: | Human, Dog, Guinea Pig, Rat |
| Host: | Rabbit |
| Clonality: | Polyclonal |
| Conjugate: | This SLC37A3 antibody is un-conjugated |
| Application: | Western Blotting (WB), Immunohistochemistry (IHC), Immunohistochemistry (Paraffin-embedded Sections) (IHC (p)) |

Product Details

| | |
|-----------------------|---|
| Immunogen: | Synthetic peptide located between aa224-273 of human SLC37A3 (Q8NCC5, NP_996996). Percent identity by BLAST analysis: Human, Chimpanzee, Gorilla (100%), Gibbon, Monkey, Galago, Marmoset, Bovine, Rabbit, Horse (92%), Dog, Bat (85%), Elephant (84%), Rat (78%). Type of Immunogen: Synthetic peptide |
| Isotype: | IgG |
| Specificity: | Human SLC37A3 |
| Predicted Reactivity: | Percent identity by BLAST analysis: Rabbit (92%) Dog (85%). |
| Purification: | Immunoaffinity purified |

Target Details

Target: SLC37A3

Alternative Name: SLC37A3 ([SLC37A3 Products](#))

Background: Name/Gene ID: SLC37A3

Synonyms: SLC37A3, Sugar phosphate exchanger 3, SPX3

Gene ID: 84255

NCBI Accession: [NP_996996](#)

UniProt: [Q8NCC5](#)

Application Details

Application Notes: Approved: IHC, IHC-P, WB (0.2 - 1 µg/mL)

Comment: Target Species of Antibody: Human

Restrictions: For Research Use only

Handling

Format: Lyophilized

Reconstitution: After adding water, will consist of PBS buffer with 2 % sucrose

Concentration: Lot specific

Buffer: Lyophilized from PBS with 2 % sucrose

Storage: 4 °C, -20 °C

Storage Comment: Long term: -20°C, the use of 50% glycerol is recommended if storing aliquots in -20°C for long term use (up to 1 year)
Short term (less than 1 week): 4°C. Avoid freeze-thaw cycles.

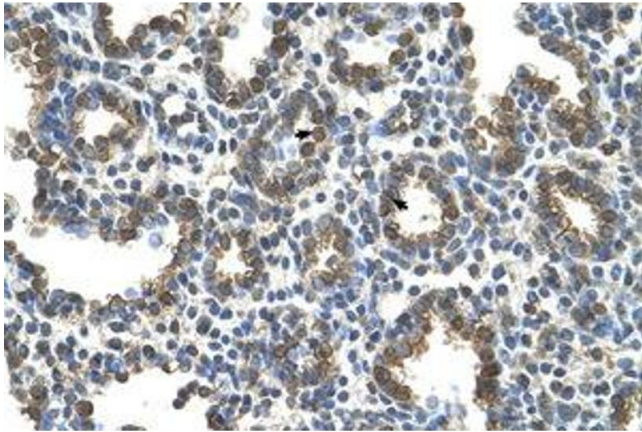


Image 1.



Image 2.