



Datasheet for ABIN6736669
anti-HFE antibody (AA 149-198)



[Go to Product page](#)

2 Images

Overview

Quantity:	100 µL
Target:	HFE
Binding Specificity:	AA 149-198
Reactivity:	Human, Rat, Dog, Monkey
Host:	Rabbit
Clonality:	Polyclonal
Conjugate:	This HFE antibody is un-conjugated
Application:	Western Blotting (WB), Immunohistochemistry (IHC), Immunohistochemistry (Paraffin-embedded Sections) (IHC (p))

Product Details

Immunogen:	Synthetic peptide located between aa149-198 of human HFE (Q30201-4, NP_620577). Percent identity by BLAST analysis: Human, Chimpanzee, Gorilla, Gibbon, Monkey, Marmoset, Dog (100%), Galago, Bovine, Pig (92%), Guinea pig (91%), Elephant, Bat, Horse (85%), Rat (84%), Orangutan, Opossum (81%). Type of Immunogen: Synthetic peptide
Isotype:	IgG
Specificity:	Human HFE
Predicted Reactivity:	Percent identity by BLAST analysis: Human, Dog (100%) Bovine, Pig (92%) Guinea pig (91%) Rat (84%).

Product Details

Purification: Immunoaffinity purified

Target Details

Target: HFE

Alternative Name: HFE ([HFE Products](#))

Background: Name/Gene ID: HFE

Synonyms: HFE, HFE1, HH, MHC class I-like protein HFE, Hemochromatosis, High Fe, MVCD7, HLA-H, HLAH, TFQTL2

Gene ID: 3077

NCBI Accession: [NP_620577](#)

UniProt: [Q30201](#)

Pathways: [Transition Metal Ion Homeostasis](#), [Regulation of Leukocyte Mediated Immunity](#), [Positive Regulation of Immune Effector Process](#)

Application Details

Application Notes: Approved: IHC, IHC-P, WB (0.2 - 1 µg/mL)

Comment: Target Species of Antibody: Human

Restrictions: For Research Use only

Handling

Format: Lyophilized

Reconstitution: After adding water, will consist of PBS buffer with 2 % sucrose

Concentration: Lot specific

Buffer: Lyophilized from PBS with 2 % sucrose

Storage: 4 °C, -20 °C

Storage Comment: Long term: -20°C, the use of 50% glycerol is recommended if storing aliquots in -20°C for long term use (up to 1 year)
Short term (less than 1 week): 4°C. Avoid freeze-thaw cycles.

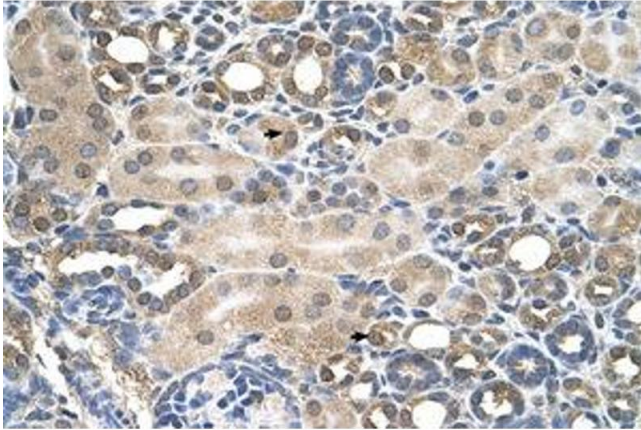


Image 1.

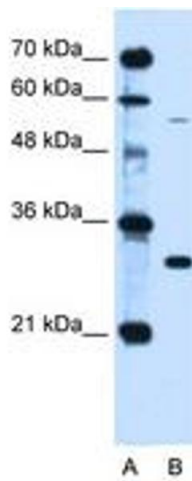


Image 2.