



[Go to Product page](#)

Datasheet for ABIN6736673
anti-ALG11 antibody (AA 392-441)

2 Images

Overview

| | |
|----------------------|--|
| Quantity: | 100 µL |
| Target: | ALG11 |
| Binding Specificity: | AA 392-441 |
| Reactivity: | Human, Mouse, Rat, Horse, Rabbit, Dog, Hamster |
| Host: | Rabbit |
| Clonality: | Polyclonal |
| Conjugate: | This ALG11 antibody is un-conjugated |
| Application: | Western Blotting (WB), Immunohistochemistry (IHC), Immunohistochemistry (Paraffin-embedded Sections) (IHC (p)) |

Product Details

| | |
|-----------------------|--|
| Immunogen: | Synthetic peptide located between aa392-441 of human ALG11 (Q2TAA5, NP_001004127). Percent identity by BLAST analysis: Mouse, Rat, Hamster, Horse (100%), Human, Gorilla, Orangutan, Gibbon, Galago, Marmoset, Bovine, Bat, Pig, Opossum, Guinea pig, Xenopus (92%), Zebrafish (90%), Dog, Rabbit, Turkey, Chicken, Platypus, Lizard (85%), Elephant (84%). Type of Immunogen: Synthetic peptide |
| Isotype: | IgG |
| Specificity: | Human ALG11 |
| Predicted Reactivity: | Percent identity by BLAST analysis: Mouse, Rat, Horse (100%) Human, Bovine, Pig, Xenopus (92%) Zebrafish (90%) Dog, Rabbit, Chicken (85%). |

Product Details

Purification: Immunoaffinity purified

Target Details

Target: ALG11

Alternative Name: ALG11 ([ALG11 Products](#))

Background: Name/Gene ID: ALG11

Synonyms: ALG11, CDG1P, KIAA0266, KIAA1266, GT8

Gene ID: 440138

NCBI Accession: [NP_001004127](#)

UniProt: [Q2TAA5](#)

Pathways: [SARS-CoV-2 Protein Interactome](#)

Application Details

Application Notes: Approved: IHC, IHC-P, WB (0.2 - 1 µg/mL)

Comment: Target Species of Antibody: Human

Restrictions: For Research Use only

Handling

Format: Lyophilized

Reconstitution: Distilled water

Concentration: Lot specific

Buffer: Lyophilized from PBS with 2 % sucrose

Storage: 4 °C, -20 °C

Storage Comment: Long term: -20°C, the use of 50% glycerol is recommended if storing aliquots in -20°C for long term use (up to 1 year)

Short term (less than 1 week): 4°C. Avoid freeze-thaw cycles.

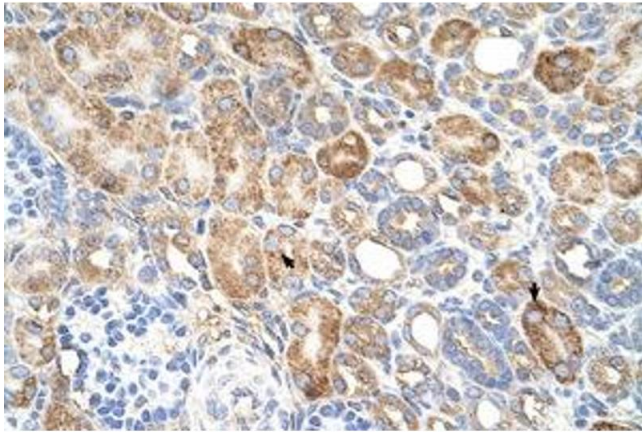


Image 1.

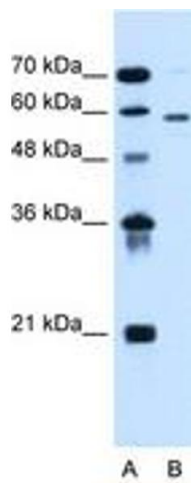


Image 2.