



Datasheet for ABIN6736676
anti-LRRC26 antibody (AA 209-258)



[Go to Product page](#)

1 Image

Overview

Quantity:	100 µL
Target:	LRRC26
Binding Specificity:	AA 209-258
Reactivity:	Human, Dog
Host:	Rabbit
Clonality:	Polyclonal
Conjugate:	This LRRC26 antibody is un-conjugated
Application:	Western Blotting (WB)

Product Details

Immunogen:	Synthetic peptide located between aa209-258 of human LRRC26 (Q2I0M4, NP_001013675). Percent identity by BLAST analysis: Human, Chimpanzee, Gorilla, Monkey, Dog (100%), Gibbon, Marmoset, Bovine (92%). Type of Immunogen: Synthetic peptide
Isotype:	IgG
Specificity:	Human LRRC26
Predicted Reactivity:	Percent identity by BLAST analysis: Dog (100%) Bovine (92%).
Purification:	Immunoaffinity purified

Target Details

Target:	LRRC26
Alternative Name:	LRRC26 (LRRC26 Products)
Background:	Name/Gene ID: LRRC26 Synonyms: LRRC26, BA350014.10, Cytokeratin associated protein, OTTHUMG00000020980, CAPC
Gene ID:	389816
NCBI Accession:	NP_001013675
UniProt:	Q2I0M4

Application Details

Application Notes:	Approved: WB (0.2 - 1 µg/mL)
Comment:	Target Species of Antibody: Human
Restrictions:	For Research Use only

Handling

Format:	Lyophilized
Reconstitution:	After adding water, will consist of PBS buffer with 2 % sucrose
Concentration:	Lot specific
Buffer:	Lyophilized from PBS with 2 % sucrose
Storage:	4 °C, -20 °C
Storage Comment:	Long term: -20°C, the use of 50% glycerol is recommended if storing aliquots in -20°C for long term use (up to 1 year) Short term (less than 1 week): 4°C. Avoid freeze-thaw cycles.

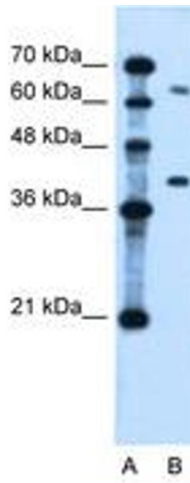


Image 1.