



[Go to Product page](#)

Datasheet for ABIN6736678
anti-ATP6AP1L antibody (C-Term)

1 Image

Overview

Quantity:	100 µL
Target:	ATP6AP1L
Binding Specificity:	C-Term
Reactivity:	Human, Pig
Host:	Rabbit
Clonality:	Polyclonal
Conjugate:	This ATP6AP1L antibody is un-conjugated
Application:	Western Blotting (WB)

Product Details

Immunogen:	Synthetic peptide from C-Terminus of human ATP6AP1L (Q52LC2, NP_001017971). Percent identity by BLAST analysis: Human, Gorilla (100%), Gibbon, Monkey, Dog, Horse (92%), Marmoset, Bat (85%). Type of Immunogen: Synthetic peptide
Isotype:	IgG
Specificity:	Human ATP6AP1L
Predicted Reactivity:	Percent identity by BLAST analysis: Dog, Horse (92%).
Purification:	Immunoaffinity purified

Target Details

Target:	ATP6AP1L
Alternative Name:	ATP6AP1L (ATP6AP1L Products)
Background:	Name/Gene ID: ATP6AP1L Synonyms: ATP6AP1L
Gene ID:	92270
NCBI Accession:	NP_001017971
UniProt:	Q52LC2

Application Details

Application Notes:	Approved: WB (0.2 - 1 µg/mL)
Comment:	Target Species of Antibody: Human
Restrictions:	For Research Use only

Handling

Format:	Lyophilized
Reconstitution:	After adding water, will consist of PBS buffer with 2 % sucrose
Concentration:	Lot specific
Buffer:	Lyophilized from PBS with 2 % sucrose
Storage:	4 °C,-20 °C
Storage Comment:	Long term: -20°C, the use of 50% glycerol is recommended if storing aliquots in -20°C for long term use (up to 1 year) Short term (less than 1 week): 4°C. Avoid freeze-thaw cycles.

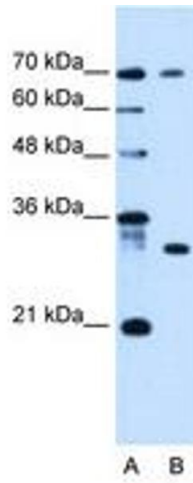


Image 1.