

Datasheet for ABIN6736679
anti-ACVR2B antibody (C-Term)



[Go to Product page](#)

1 Image

Overview

Quantity:	100 µL
Target:	ACVR2B
Binding Specificity:	C-Term
Reactivity:	Human, Dog, Cow, Guinea Pig, Horse, Sheep, Pig, Bat, Hamster, Monkey, Xenopus laevis, Chicken
Host:	Rabbit
Clonality:	Polyclonal
Conjugate:	This ACVR2B antibody is un-conjugated
Application:	Western Blotting (WB)

Product Details

Immunogen:	Synthetic peptide from C-Terminus of human ACVR2B (Q4VAU9). Percent identity by BLAST analysis: Human, Chimpanzee, Gorilla, Gibbon, Monkey, Galago, Sheep, Hamster, Elephant, Panda, Dog, Bovine, Bat, Horse, Pig, Opossum, Guinea pig, Turkey, Chicken, Xenopus, Trout (100%), Mouse, Rat, Platypus, Medaka, Zebrafish (92%), Marmoset, Stickleback (85%). Type of Immunogen: Synthetic peptide
Isotype:	IgG
Specificity:	Human ACVR2B
Predicted Reactivity:	Percent identity by BLAST analysis: Human, Sheep, Dog, Bovine, Horse, Pig, Chicken, Xenopus (100%) Rat, Zebrafish (92%).

Product Details

Purification: Immunoaffinity purified

Target Details

Target: ACVR2B

Alternative Name: ACTRIIB / ACVR2B ([ACVR2B Products](#))

Background: Name/Gene ID: ACVR2B
Subfamily: Activin/TGFb
Family: Protein Kinase

Synonyms: ACVR2B, Activin A receptor type IIB, Activin receptor type-2B, ActR-IIB, ACTRIIB, Activin receptor type IIB, Activin A receptor, type IIB, HTX4

Gene ID: 93

UniProt: [Q13705](#)

Pathways: [Hormone Transport, Cancer Immune Checkpoints](#)

Application Details

Application Notes: Approved: WB (0.2 - 1 µg/mL)

Comment: Target Species of Antibody: Human

Restrictions: For Research Use only

Handling

Format: Lyophilized

Reconstitution: After adding water, will consist of PBS buffer with 2 % sucrose

Concentration: Lot specific

Buffer: Lyophilized from PBS with 2 % sucrose

Handling Advice: Avoid repeated freezing and thawing.

Storage: 4 °C, -20 °C

Storage Comment: Long term: -20°C, the use of 50% glycerol is recommended if storing aliquots in -20°C for long term use (up to 1 year)
Short term (less than 1 week): 4°C. Avoid freeze-thaw cycles.

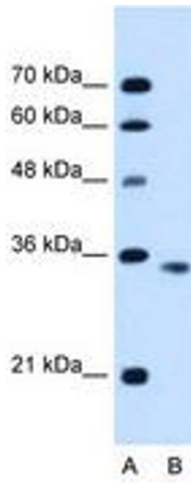


Image 1.