



Datasheet for ABIN6736683
anti-OSBPL9 antibody (AA 73-122)



[Go to Product page](#)

2 Images

Overview

Quantity:	100 µL
Target:	OSBPL9
Binding Specificity:	AA 73-122
Reactivity:	Human, Dog, Cow, Horse, Rabbit, Guinea Pig, Pig, Bat, Monkey
Host:	Rabbit
Clonality:	Polyclonal
Conjugate:	This OSBPL9 antibody is un-conjugated
Application:	Immunohistochemistry (IHC), Western Blotting (WB), Immunohistochemistry (Paraffin-embedded Sections) (IHC (p))

Product Details

Immunogen:	Synthetic peptide located between aa73-122 of human OSBPL9 (Q8TAS8, NP_683702). Percent identity by BLAST analysis: Human, Chimpanzee, Gorilla, Orangutan, Gibbon, Monkey, Galago, Marmoset, Elephant, Dog, Bovine, Bat, Rabbit, Horse, Pig, Opossum, Guinea pig (100%), Mouse, Rat, Hamster, Turkey, Zebra finch, Chicken, Lizard, Stickleback, Zebrafish (92%). Type of Immunogen: Synthetic peptide
Isotype:	IgG
Specificity:	Human OSBPL9
Predicted Reactivity:	Percent identity by BLAST analysis: Human, Dog, Bovine, Rabbit, Horse (100%) Mouse, Rat, Chicken, Zebrafish (92%).

Product Details

Purification: Immunoaffinity purified

Target Details

Target: OSBPL9

Alternative Name: OSBPL9 ([OSBPL9 Products](#))

Background: Name/Gene ID: OSBPL9

Synonyms: OSBPL9, ORP-9, ORP9, OSBP-related protein 9, OSBP4

Gene ID: 114883

NCBI Accession: [NP_683702](#)

UniProt: [Q96SU4](#)

Application Details

Application Notes: Approved: IHC, IHC-P, WB (0.2 - 1 µg/mL)

Comment: Target Species of Antibody: Human

Restrictions: For Research Use only

Handling

Format: Lyophilized

Reconstitution: After adding water, will consist of PBS buffer with 2 % sucrose

Concentration: Lot specific

Buffer: Lyophilized from PBS with 2 % sucrose

Storage: 4 °C, -20 °C

Storage Comment: Long term: -20°C, the use of 50% glycerol is recommended if storing aliquots in -20°C for long term use (up to 1 year)

Short term (less than 1 week): 4°C. Avoid freeze-thaw cycles.

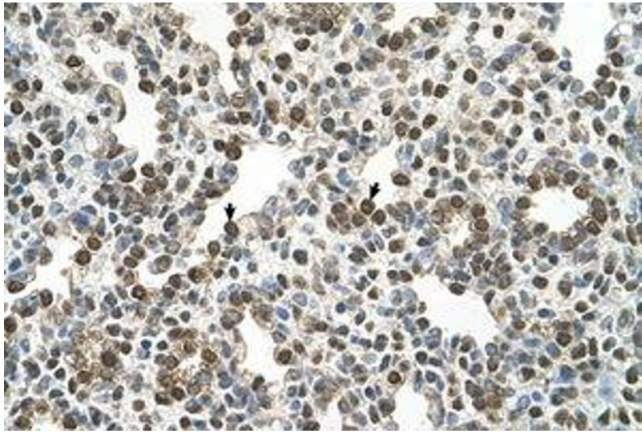


Image 1.

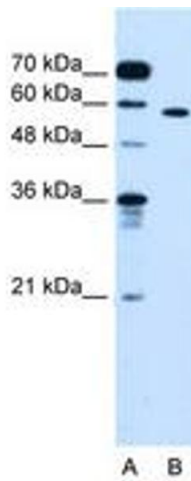


Image 2.