

Datasheet for ABIN6736698
anti-A1BG antibody (AA 123-172)

2 Images

[Go to Product page](#)

Overview

Quantity:	100 µL
Target:	A1BG
Binding Specificity:	AA 123-172
Reactivity:	Human
Host:	Rabbit
Clonality:	Polyclonal
Conjugate:	This A1BG antibody is un-conjugated
Application:	Western Blotting (WB), Immunohistochemistry (IHC), Immunohistochemistry (Paraffin-embedded Sections) (IHC (p))

Product Details

Brand:	IHC-plus™
Immunogen:	Synthetic peptide located between aa123-172 of human ACAT2 (P04217, NP_570602). Percent identity by BLAST analysis: Human, Gibbon (100%), Monkey, Marmoset (85%). Type of Immunogen: Synthetic peptide
Isotype:	IgG
Specificity:	Human A1BG
Predicted Reactivity:	Percent identity by BLAST analysis: Human (100%).
Purification:	Immunoaffinity purified

Target Details

Target:	A1BG
Alternative Name:	A1BG / GAB (A1BG Products)
Background:	Name/Gene ID: A1BG Synonyms: A1BG, A1B, ABG, GAB, HYST2477, Alpha-1-B glycoprotein, Alpha-1B-glycoprotein
Gene ID:	1
NCBI Accession:	NP_570602
UniProt:	P04217

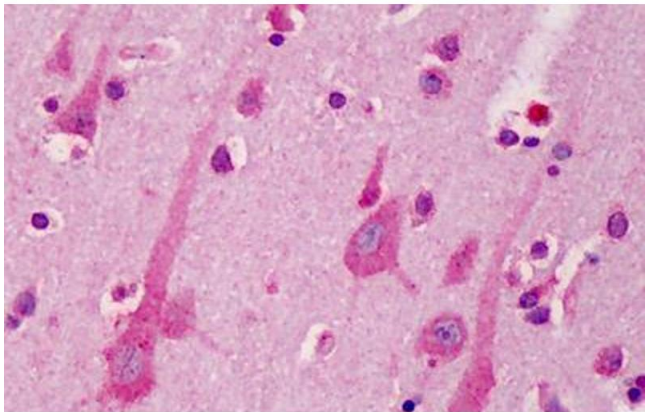
Application Details

Application Notes:	Approved: IHC, IHC-P (5 µg/mL), WB (0.1 µg/mL) Usage: Immunohistochemistry: This antibody was validated for use in immunohistochemistry on a panel of 21 formalin-fixed, paraffin-embedded (FFPE) human tissues after heat induced antigen retrieval in pH 6.0 citrate buffer. After incubation with the primary antibody, slides were incubated with biotinylated secondary antibody, followed by alkaline phosphatase-streptavidin and chromogen. The stained slides were evaluated by a pathologist to confirm staining specificity. The optimal working concentration for this antibody was determined to be 5 µg/mL.
Comment:	Target Species of Antibody: Human
Restrictions:	For Research Use only

Handling

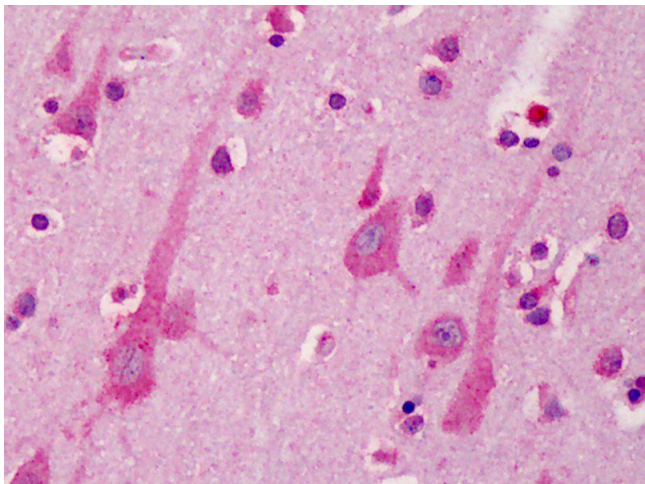
Format:	Lyophilized
Reconstitution:	After adding water, will consist of PBS buffer with 2 % sucrose
Concentration:	Lot specific
Buffer:	Lyophilized from PBS with 2 % sucrose
Handling Advice:	Avoid repeat freeze-thaw cycles.
Storage:	4 °C, -20 °C
Storage Comment:	Long term: -20°C, the use of 50% glycerol is recommended if storing aliquots in -20°C for long term use (up to 1 year)

Short term (less than 1 week): 4°C. Avoid freeze-thaw cycles.



Immunohistochemistry (Formalin-fixed Paraffin-embedded Sections)

Image 1. Human Brain, Cortex: Formalin-Fixed, Paraffin-Embedded (FFPE)



Immunohistochemistry

Image 2. Anti-A1BG antibody IHC of human brain, cortex. Immunohistochemistry of formalin-fixed, paraffin-embedded tissue after heat-induced antigen retrieval. Antibody concentration 5 ug/ml. This image was taken for the unconjugated form of this product. Oth ...