

Datasheet for ABIN6736703
anti-DDX39B antibody (C-Term)[Go to Product page](#)

2 Images

Overview

Quantity:	100 µL
Target:	DDX39B
Binding Specificity:	C-Term
Reactivity:	Human, Mouse, Rat, Cow, Dog, Goat, Guinea Pig, Horse, Monkey, Pig, Rabbit, Bat, Chicken
Host:	Rabbit
Clonality:	Polyclonal
Conjugate:	This DDX39B antibody is un-conjugated
Application:	Immunohistochemistry (IHC), Western Blotting (WB), Immunohistochemistry (Paraffin-embedded Sections) (IHC (p))

Product Details

Brand:	IHC-plus™
Immunogen:	Synthetic peptide from C-Terminus of human DDX39B (Q13838, NP_542165). Percent identity by BLAST analysis: Human, Chimpanzee, Gorilla, Orangutan, Gibbon, Monkey, Marmoset, Mouse, Rat, Goat, Elephant, Dog, Bovine, Bat, Rabbit, Horse, Pig, Guinea pig, Turkey, Chicken, Platypus (100%), Opossum, Lizard, Xenopus, Zebrafish, Drosophila (92%), Salmon, Smelt, Nematode (85%). Type of Immunogen: Synthetic peptide
Isotype:	IgG
Specificity:	Human DDX39B / UAP56

Product Details

Predicted Reactivity: Percent identity by BLAST analysis: Human, Goat (100%) Zebrafish (85%).

Purification: Immunoaffinity purified

Target Details

Target: DDX39B

Alternative Name: DDX39B / UAP56 / BAT1 ([DDX39B Products](#))

Background: Name/Gene ID: DDX39B

Synonyms: DDX39B, BAT1, DEAD box protein UAP56, HLA-B associated transcript 1, UAP56, ATP-dependent RNA helicase p47, D6S81E, Spliceosome RNA helicase BAT1

Gene ID: 7919

NCBI Accession: [NP_542165](#)

UniProt: [Q13838](#)

Pathways: [Ribonucleoprotein Complex Subunit Organization](#)

Application Details

Application Notes: Approved: IHC, IHC-P (5 µg/mL), WB (0.2 - 1 µg/mL)

Usage: Immunohistochemistry: This antibody was validated for use in immunohistochemistry on a panel of 21 formalin-fixed, paraffin-embedded (FFPE) human tissues after heat induced antigen retrieval in pH 6.0 citrate buffer. After incubation with the primary antibody, slides were incubated with biotinylated secondary antibody, followed by alkaline phosphatase-streptavidin and chromogen. The stained slides were evaluated by a pathologist to confirm staining specificity. The optimal working concentration for this antibody was determined to be 5 µg/mL.

Comment: Target Species of Antibody: Human

Restrictions: For Research Use only

Handling

Format: Lyophilized

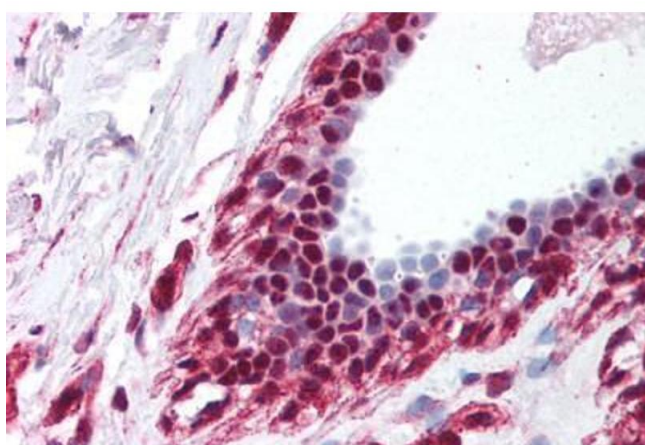
Reconstitution: After adding water, will consist of PBS buffer with 2 % sucrose

Concentration: Lot specific

Handling

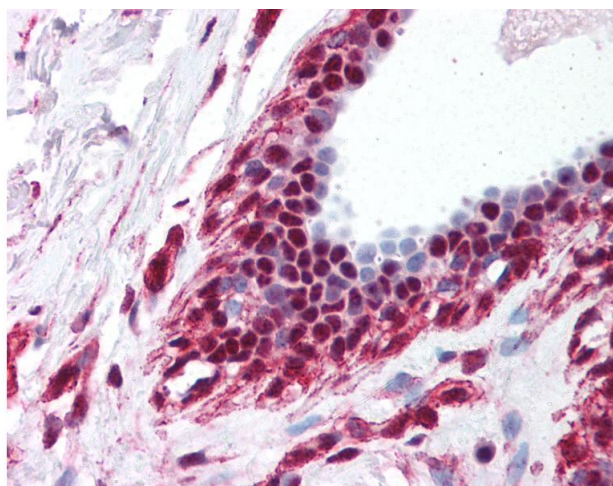
Buffer:	Lyophilized from PBS with 2 % sucrose
Handling Advice:	Avoid repeat freeze-thaw cycles.
Storage:	4 °C, -20 °C
Storage Comment:	Long term: -20°C, the use of 50% glycerol is recommended if storing aliquots in -20°C for long term use (up to 1 year) Short term (less than 1 week): 4°C. Avoid freeze-thaw cycles.

Images



Immunohistochemistry (Paraffin-embedded Sections)

Image 1. Human Breast (formalin-fixed, paraffin-embedded) stained with BAT1 antibody ABIN214087 at 5 ug/ml followed by biotinylated goat anti-rabbit IgG secondary antibody ABIN481713, alkaline phosphatase-streptavidin and chromogen.



Immunohistochemistry

Image 2. Anti-DDX39B / UAP56 antibody IHC of human breast. Immunohistochemistry of formalin-fixed, paraffin-embedded tissue after heat-induced antigen retrieval. Antibody concentration 5 ug/ml. This image was taken for the unconjugated form of this product. ...