

Datasheet for ABIN6736707  
**anti-CPA1 antibody (AA 24-73)**[Go to Product page](#)

## 2 Images

## Overview

Quantity:	100 µL
Target:	CPA1
Binding Specificity:	AA 24-73
Reactivity:	Human, Cow, Dog, Horse
Host:	Rabbit
Clonality:	Polyclonal
Conjugate:	This CPA1 antibody is un-conjugated
Application:	Western Blotting (WB), Immunohistochemistry (IHC), Immunohistochemistry (Paraffin-embedded Sections) (IHC (p))

## Product Details

Brand:	IHC-plus™
Immunogen:	Synthetic peptide located between aa24-73 of human CPA1 (P15085, NP_001859). Percent identity by BLAST analysis: Human, Chimpanzee, Gorilla, Gibbon, Horse (100%), Monkey, Rat, Bat, Pig (92%), Marmoset, Dog (85%), Bovine (83%), Mouse (78%).  Type of Immunogen: Synthetic peptide
Isotype:	IgG
Specificity:	Human CPA1
Predicted Reactivity:	Percent identity by BLAST analysis: Pig (92%) Dog (85%) Bovine (83%).
Purification:	Immunoaffinity purified

## Target Details

Target:	CPA1
Alternative Name:	CPA1 / Carboxypeptidase A ( <a href="#">CPA1 Products</a> )
Background:	Name/Gene ID: CPA1 Subfamily: Metallopeptidase M14 Family: Exopeptidase  Synonyms: CPA1, CPA, Carboxypeptidase A1, Pancreatic carboxypeptidase A, Carboxypeptidase A
Gene ID:	1357
NCBI Accession:	<a href="#">NP_001859</a>
UniProt:	<a href="#">P15085</a>

## Application Details

Application Notes:	Approved: IHC, IHC-P (5 µg/mL), WB (0.2 - 1 µg/mL)  Usage: Immunohistochemistry: This antibody was validated for use in immunohistochemistry on a panel of 21 formalin-fixed, paraffin-embedded (FFPE) human tissues after heat induced antigen retrieval in pH 6.0 citrate buffer. After incubation with the primary antibody, slides were incubated with biotinylated secondary antibody, followed by alkaline phosphatase-streptavidin and chromogen. The stained slides were evaluated by a pathologist to confirm staining specificity. The optimal working concentration for this antibody was determined to be 5 µg/mL.
Comment:	Target Species of Antibody: Human
Restrictions:	For Research Use only

## Handling

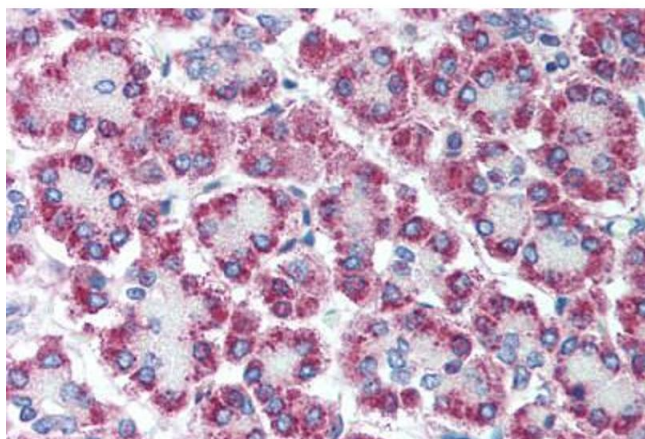
Format:	Lyophilized
Reconstitution:	After adding water, will consist of PBS buffer with 2 % sucrose
Concentration:	Lot specific
Buffer:	Lyophilized from PBS with 2 % sucrose
Handling Advice:	Avoid repeat freeze-thaw cycles.
Storage:	4 °C, -20 °C

## Handling

Storage Comment: Long term: -20°C, the use of 50% glycerol is recommended if storing aliquots in -20°C for long term use (up to 1 year)

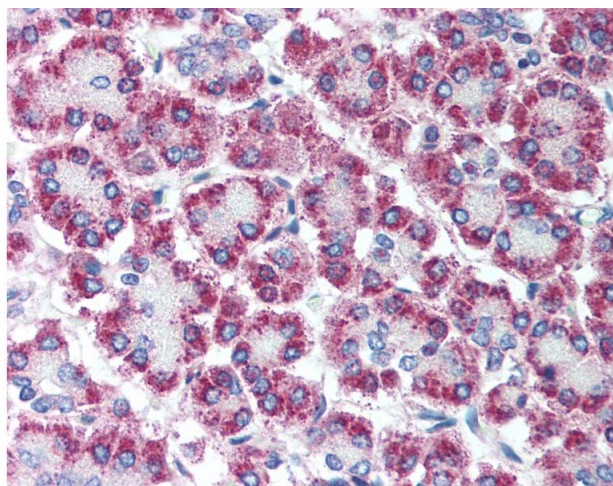
Short term (less than 1 week): 4°C. Avoid freeze-thaw cycles.

## Images



### Immunohistochemistry (Paraffin-embedded Sections)

**Image 1.** Human Pancreas (formalin-fixed, paraffin-embedded) stained with CPA1 antibody ABIN214091 at 5 ug/ml followed by biotinylated goat anti-rabbit IgG secondary antibody ABIN481713, alkaline phosphatase-streptavidin and chromogen.



### Immunohistochemistry

**Image 2.** Anti-CPA1 antibody IHC of human pancreas. Immunohistochemistry of formalin-fixed, paraffin-embedded tissue after heat-induced antigen retrieval. Antibody concentration 5 ug/ml. This image was taken for the unconjugated form of this product. Other fo ...