

Datasheet for ABIN6736708
anti-CRIP2 antibody (AA 78-127)[Go to Product page](#)

2 Images

Overview

Quantity:	100 µL
Target:	CRIP2
Binding Specificity:	AA 78-127
Reactivity:	Human, Guinea Pig, Monkey
Host:	Rabbit
Clonality:	Polyclonal
Conjugate:	This CRIP2 antibody is un-conjugated
Application:	Western Blotting (WB), Immunohistochemistry (IHC), Immunohistochemistry (Paraffin-embedded Sections) (IHC (p))

Product Details

Brand:	IHC-plus™
Immunogen:	Synthetic peptide located between aa78-127 of human CRIP2 (P52943, NP_001303). Percent identity by BLAST analysis: Human, Chimpanzee, Orangutan, Monkey, Marmoset, Guinea pig (100%), Mouse, Rat, Dog, Bovine, Chicken (92%), Galago, Opossum (85%). Type of Immunogen: Synthetic peptide
Isotype:	IgG
Specificity:	Human CRIP2
Predicted Reactivity:	Percent identity by BLAST analysis: Human (100%) Mouse, Rat, Dog, Bovine, Chicken (92%).
Purification:	Immunoaffinity purified

Target Details

Target:	CRIP2
Alternative Name:	CRIP2 (CRIP2 Products)
Background:	Name/Gene ID: CRIP2 Synonyms: CRIP2, CRIP, CRP-2, CRP2, ESP1, Protein ESP1, LIM domain protein ESP1/CRP2, Cysteine-rich protein 2
Gene ID:	1397
NCBI Accession:	NP_001303
UniProt:	P52943

Application Details

Application Notes:	Approved: IHC, IHC-P (5 µg/mL), WB (0.2 - 1 µg/mL) Usage: Immunohistochemistry: This antibody was validated for use in immunohistochemistry on a panel of 21 formalin-fixed, paraffin-embedded (FFPE) human tissues after heat induced antigen retrieval in pH 6.0 citrate buffer. After incubation with the primary antibody, slides were incubated with biotinylated secondary antibody, followed by alkaline phosphatase-streptavidin and chromogen. The stained slides were evaluated by a pathologist to confirm staining specificity. The optimal working concentration for this antibody was determined to be 5 µg/mL.
Comment:	Target Species of Antibody: Human
Restrictions:	For Research Use only

Handling

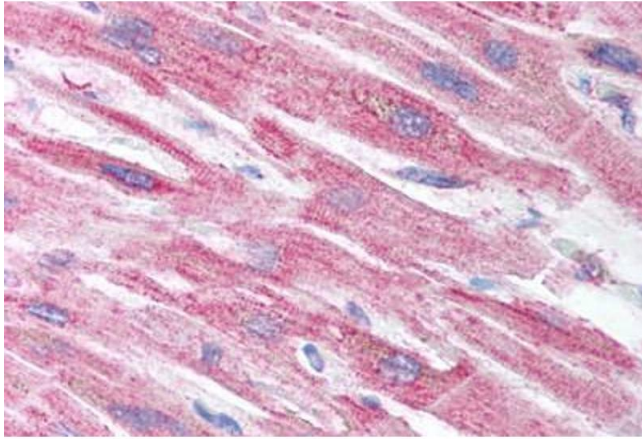
Format:	Lyophilized
Reconstitution:	After adding water, will consist of PBS buffer with 2 % sucrose
Concentration:	Lot specific
Buffer:	Lyophilized from PBS with 2 % sucrose
Handling Advice:	Avoid repeat freeze-thaw cycles.
Storage:	4 °C,-20 °C
Storage Comment:	Long term: -20°C, the use of 50% glycerol is recommended if storing aliquots in -20°C for long

Handling

term use (up to 1 year)

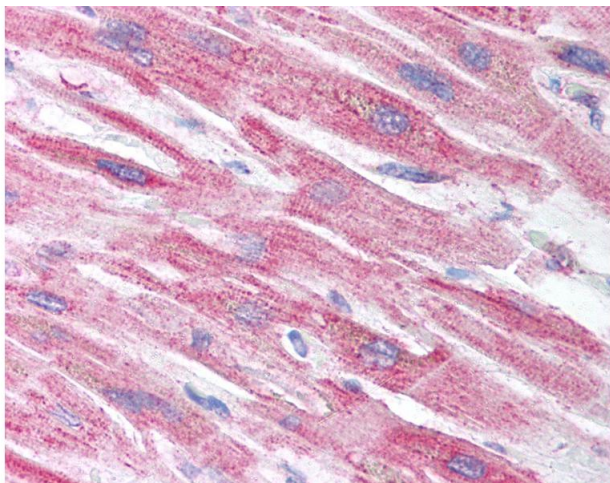
Short term (less than 1 week): 4°C. Avoid freeze-thaw cycles.

Images



Immunohistochemistry

Image 1. Human Heart (formalin-fixed, paraffin-embedded) stained with CRIP2 antibody ABIN214092 at 5 ug/ml followed by biotinylated goat anti-rabbit IgG secondary antibody ABIN481713, alkaline phosphatase-streptavidin and chromogen.



Immunohistochemistry

Image 2. Anti-CRIP2 antibody IHC of human heart. Immunohistochemistry of formalin-fixed, paraffin-embedded tissue after heat-induced antigen retrieval. Antibody concentration 5 ug/ml. This image was taken for the unconjugated form of this product. Other form ...