

Datasheet for ABIN6736710  
**anti-DIDO1 antibody (AA 72-121)**

## 2 Images

[Go to Product page](#)

## Overview

Quantity:	100 µL
Target:	DIDO1
Binding Specificity:	AA 72-121
Reactivity:	Human, Rabbit, Guinea Pig, Monkey
Host:	Rabbit
Clonality:	Polyclonal
Conjugate:	This DIDO1 antibody is un-conjugated
Application:	Western Blotting (WB), Immunohistochemistry (IHC), Immunohistochemistry (Paraffin-embedded Sections) (IHC (p))

## Product Details

Brand:	IHC-plus™
Immunogen:	Synthetic peptide located between aa72-121 of human DIDO1 (Q9BTC0-2, NP_542987). Percent identity by BLAST analysis: Human, Chimpanzee, Gorilla, Orangutan, Gibbon, Monkey, Rabbit (100%), Mouse, Rat, Bovine, Horse, Chicken (92%), Opossum, Guinea pig (85%), Galago, Elephant, Bat, Turkey, Lizard (84%).  Type of Immunogen: Synthetic peptide
Isotype:	IgG
Specificity:	Human DIDO1 / DATF1
Predicted Reactivity:	Percent identity by BLAST analysis: Human, Rabbit (100%) Mouse, Rat, Bovine, Horse, Chicken

## Product Details

(92%) Guinea pig (85%).

Purification: Immunoaffinity purified

## Target Details

Target: DIDO1

Alternative Name: DATF1 / DIDO1 ([DIDO1 Products](#))

Background: Name/Gene ID: DIDO1  
Family: Transcription factor

Synonyms: DIDO1, C20orf158, Death-inducer obliterator 1, DIDO3, DIDO2, DJ885L7.8, DIO-1, HDido1, KIAA0333, BYE1, DATF-1, DATF1, Death inducer-obliterator 1

Gene ID: 11083

NCBI Accession: [NP\\_542987](#)

UniProt: [Q9BTC0](#)

Pathways: [Hormone Activity](#)

## Application Details

Application Notes: Approved: IHC, IHC-P (5 µg/mL), WB (0.2 - 1 µg/mL)

Usage: Immunohistochemistry: This antibody was validated for use in immunohistochemistry on a panel of 21 formalin-fixed, paraffin-embedded (FFPE) human tissues after heat induced antigen retrieval in pH 6.0 citrate buffer. After incubation with the primary antibody, slides were incubated with biotinylated secondary antibody, followed by alkaline phosphatase-streptavidin and chromogen. The stained slides were evaluated by a pathologist to confirm staining specificity. The optimal working concentration for this antibody was determined to be 5 µg/mL.

Comment: Target Species of Antibody: Human

Restrictions: For Research Use only

## Handling

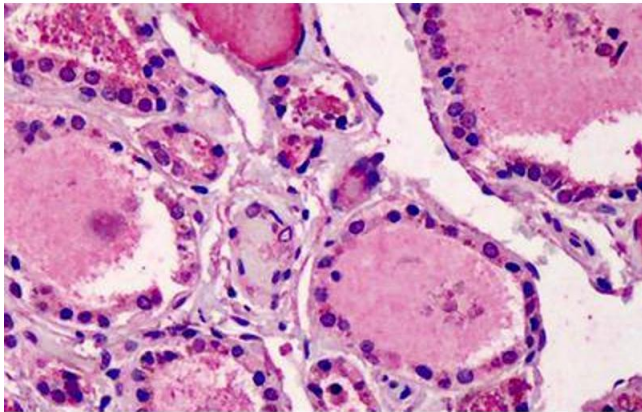
Format: Lyophilized

Reconstitution: After adding water, will consist of PBS buffer with 2 % sucrose

## Handling

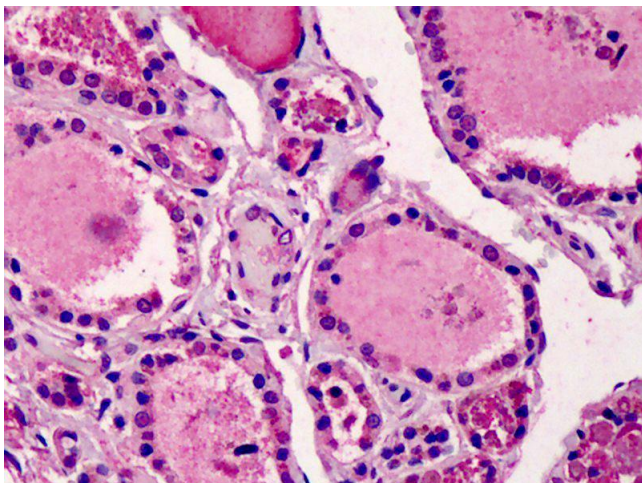
Concentration:	Lot specific
Buffer:	Lyophilized from PBS with 2 % sucrose
Handling Advice:	Avoid repeat freeze-thaw cycles.
Storage:	4 °C,-20 °C
Storage Comment:	Long term: -20°C, the use of 50% glycerol is recommended if storing aliquots in -20°C for long term use (up to 1 year) Short term (less than 1 week): 4°C. Avoid freeze-thaw cycles.

## Images



### Immunohistochemistry (Formalin-fixed Paraffin-embedded Sections)

**Image 1.** Human Thyroid: Formalin-Fixed, Paraffin-Embedded (FFPE)



### Immunohistochemistry

**Image 2.** Anti-DIDO1 / DATF1 antibody IHC of human thyroid. Immunohistochemistry of formalin-fixed, paraffin-embedded tissue after heat-induced antigen retrieval. Antibody concentration 5 ug/ml. This image was taken for the unconjugated form of this product. ...