



Datasheet for ABIN6736711  
**anti-DOK2 antibody (C-Term)**



[Go to Product page](#)

2 Images

Overview

Quantity:	100 µL
Target:	DOK2
Binding Specificity:	C-Term
Reactivity:	Human, Cow, Pig, Guinea Pig
Host:	Rabbit
Clonality:	Polyclonal
Conjugate:	This DOK2 antibody is un-conjugated
Application:	Western Blotting (WB), Immunohistochemistry (IHC), Immunohistochemistry (Paraffin-embedded Sections) (IHC (p))

Product Details

Brand:	IHC-plus™
Immunogen:	Synthetic peptide from C-Terminus of human DOK2 (O60496, NP_003965). Percent identity by BLAST analysis: Human, Gorilla, Monkey, Galago, Bovine, Pig, Guinea pig (100%), Marmoset, Mouse, Rat, Elephant, Dog, Bat, Horse (90%).  Type of Immunogen: Synthetic peptide
Isotype:	IgG
Specificity:	Human DOK2
Predicted Reactivity:	Percent identity by BLAST analysis: Human, Bovine, Pig (100%) Mouse, Rat, Dog, Horse (90%).
Purification:	Immunoaffinity purified

## Target Details

---

Target:	DOK2
Alternative Name:	DOK2 ( <a href="#">DOK2 Products</a> )
Background:	Name/Gene ID: DOK2  Synonyms: DOK2, Docking protein 2, 56kD, Dok-2, Docking protein 2, Docking protein 2, 56 kDa, p56(dok-2), p56dok-2, p56DOK
Gene ID:	9046
NCBI Accession:	<a href="#">NP_003965</a>
UniProt:	<a href="#">O60496</a>

## Application Details

---

Application Notes:	Approved: IHC, IHC-P (5 µg/mL), WB (0.2 - 1 µg/mL)  Usage: Immunohistochemistry: This antibody was validated for use in immunohistochemistry on a panel of 21 formalin-fixed, paraffin-embedded (FFPE) human tissues after heat induced antigen retrieval in pH 6.0 citrate buffer. After incubation with the primary antibody, slides were incubated with biotinylated secondary antibody, followed by alkaline phosphatase-streptavidin and chromogen. The stained slides were evaluated by a pathologist to confirm staining specificity. The optimal working concentration for this antibody was determined to be 5 µg/mL.
Comment:	Target Species of Antibody: Human
Restrictions:	For Research Use only

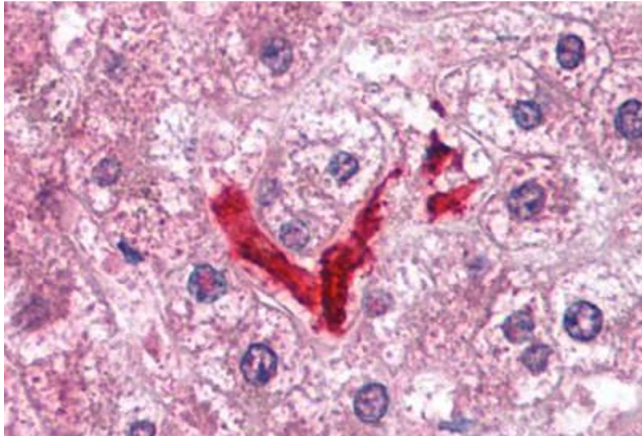
## Handling

---

Format:	Lyophilized
Reconstitution:	After adding water, will consist of PBS buffer with 2 % sucrose
Concentration:	Lot specific
Buffer:	Lyophilized.
Handling Advice:	Avoid repeat freeze-thaw cycles.
Storage:	4 °C,-20 °C
Storage Comment:	Long term: -20°C, the use of 50% glycerol is recommended if storing aliquots in -20°C for long

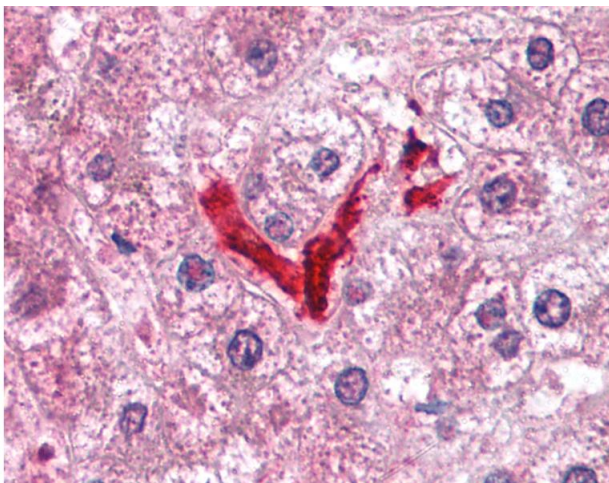
term use (up to 1 year)

Short term (less than 1 week): 4°C. Avoid freeze-thaw cycles.



### Immunohistochemistry (Paraffin-embedded Sections)

**Image 1.** Human Liver, Kupffer Cells (formalin-fixed, paraffin-embedded) stained with DOK2 antibody ABIN214096 at 5 ug/ml followed by biotinylated goat anti-rabbit IgG secondary antibody ABIN481713, alkaline phosphatase-streptavidin and chromogen.



### Immunohistochemistry

**Image 2.** Anti-DOK2 antibody IHC of human liver, Kupffer cells. Immunohistochemistry of formalin-fixed, paraffin-embedded tissue after heat-induced antigen retrieval. Antibody concentration 5 ug/ml. This image was taken for the unconjugated form of this produ ...