

Datasheet for ABIN6736712 anti-E2F2 antibody (AA 191-240)



[Go to Product page](#)

2 Images

Overview

Quantity:	100 µL
Target:	E2F2
Binding Specificity:	AA 191-240
Reactivity:	Human, Mouse, Rabbit, Dog, Cow, Horse, Monkey, Bat
Host:	Rabbit
Clonality:	Polyclonal
Conjugate:	This E2F2 antibody is un-conjugated
Application:	Western Blotting (WB), Immunohistochemistry (IHC), Immunohistochemistry (Paraffin-embedded Sections) (IHC (p))

Product Details

Brand:	IHC-plus™
Immunogen:	Synthetic peptide located between aa191-240 of human E2F2 (Q14209, NP_004082). Percent identity by BLAST analysis: Human, Gibbon, Monkey, Marmoset, Panda, Dog, Bovine, Bat, Horse (100%), Gorilla, Galago, Elephant, Guinea pig (92%), Mouse, Rabbit (85%). Type of Immunogen: Synthetic peptide
Isotype:	IgG
Specificity:	Human E2F2
Predicted Reactivity:	Percent identity by BLAST analysis: Human, Dog, Bovine, Horse (100%) Guinea pig (92%) Mouse, Rabbit (85%).

Product Details

Purification: Immunoaffinity purified

Target Details

Target: E2F2

Alternative Name: E2F2 ([E2F2 Products](#))

Background: Name/Gene ID: E2F2

Synonyms: E2F2, E2F-2, E2F transcription factor 2, Transcription factor E2F2

Gene ID: 1870

NCBI Accession: [NP_004082](#)

UniProt: [Q14209](#)

Pathways: [Cell Division Cycle](#), [Mitotic G1-G1/S Phases](#), [DNA Replication](#)

Application Details

Application Notes: Approved: IHC, IHC-P (5 µg/mL), WB (0.2 - 1 µg/mL)

Usage: Immunohistochemistry: This antibody was validated for use in immunohistochemistry on a panel of 21 formalin-fixed, paraffin-embedded (FFPE) human tissues after heat induced antigen retrieval in pH 6.0 citrate buffer. After incubation with the primary antibody, slides were incubated with biotinylated secondary antibody, followed by alkaline phosphatase-streptavidin and chromogen. The stained slides were evaluated by a pathologist to confirm staining specificity. The optimal working concentration for this antibody was determined to be 5 µg/mL.

Comment: Target Species of Antibody: Human

Restrictions: For Research Use only

Handling

Format: Lyophilized

Reconstitution: After adding water, will consist of PBS buffer with 2 % sucrose

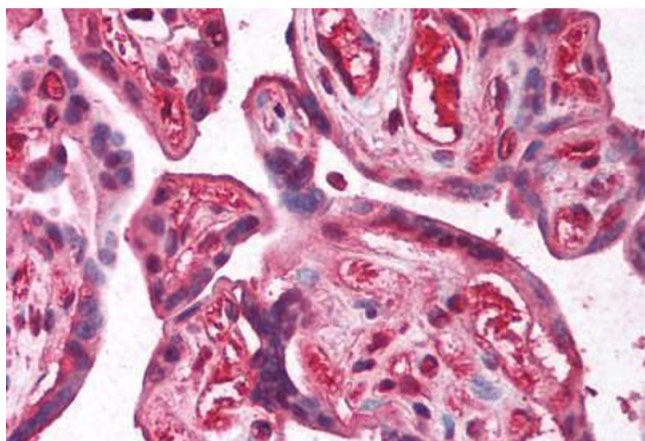
Concentration: Lot specific

Buffer: Lyophilized from PBS with 2 % sucrose

Handling

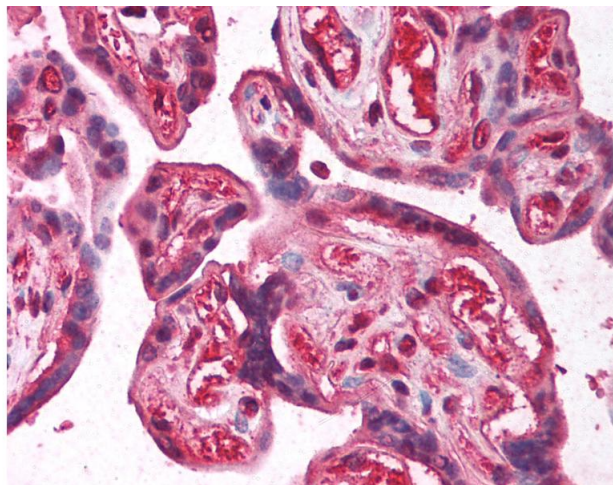
Handling Advice:	Avoid repeat freeze-thaw cycles.
Storage:	4 °C,-20 °C
Storage Comment:	Long term: -20°C, the use of 50% glycerol is recommended if storing aliquots in -20°C for long term use (up to 1 year) Short term (less than 1 week): 4°C. Avoid freeze-thaw cycles.

Images



Immunohistochemistry (Paraffin-embedded Sections)

Image 1. Human Placenta (formalin-fixed, paraffin-embedded) stained with E2F2 antibody ABIN214097 at 5 ug/ml followed by biotinylated goat anti-rabbit IgG secondary antibody ABIN481713, alkaline phosphatase-streptavidin and chromogen.



Immunohistochemistry

Image 2. Anti-E2F2 antibody IHC of human placenta. Immunohistochemistry of formalin-fixed, paraffin-embedded tissue after heat-induced antigen retrieval. Antibody concentration 5 ug/ml. This image was taken for the unconjugated form of this product. Other fo ...