

Datasheet for ABIN6736714
anti-EEA1 antibody (AA 307-356)[Go to Product page](#)

2 Images

Overview

Quantity:	100 µL
Target:	EEA1
Binding Specificity:	AA 307-356
Reactivity:	Human, Dog, Rabbit, Monkey, Pig
Host:	Rabbit
Clonality:	Polyclonal
Conjugate:	This EEA1 antibody is un-conjugated
Application:	Western Blotting (WB), Immunohistochemistry (IHC), Immunohistochemistry (Paraffin-embedded Sections) (IHC (p))

Product Details

Brand:	IHC-plus™
Immunogen:	Synthetic peptide located between aa307-356 of human EEA1 (Q15075, NP_003557). Percent identity by BLAST analysis: Human, Chimpanzee, Gorilla, Gibbon, Monkey, Marmoset (100%), Galago, Mouse, Guinea pig, Platypus (92%), Rat, Bovine, Horse (91%), Elephant, Rabbit, Xenopus (84%), Bat, Pig (83%). Type of Immunogen: Synthetic peptide
Isotype:	IgG
Specificity:	Human EEA1
Predicted Reactivity:	Percent identity by BLAST analysis: Human (100%) Mouse, Guinea pig (92%) Rat, Bovine, Horse

Product Details

(91%) Rabbit (84%) Pig (83%).

Purification: Immunoaffinity purified

Target Details

Target: EEA1

Alternative Name: EEA1 ([EEA1 Products](#))

Background: Name/Gene ID: EEA1

Synonyms: EEA1, MST105, MSTP105, ZFYVE2, Early endosome antigen 1

Gene ID: 8411

NCBI Accession: [NP_003557](#)

UniProt: [Q15075](#)

Pathways: [Toll-Like Receptors Cascades](#)

Application Details

Application Notes: Approved: IHC, IHC-P (5 µg/mL), WB (0.06 µg/mL)

Usage: Immunohistochemistry: This antibody was validated for use in immunohistochemistry on a panel of 21 formalin-fixed, paraffin-embedded (FFPE) human tissues after heat induced antigen retrieval in pH 6.0 citrate buffer. After incubation with the primary antibody, slides were incubated with biotinylated secondary antibody, followed by alkaline phosphatase-streptavidin and chromogen. The stained slides were evaluated by a pathologist to confirm staining specificity. The optimal working concentration for this antibody was determined to be 5 µg/mL.

Comment: Target Species of Antibody: Human

Restrictions: For Research Use only

Handling

Format: Lyophilized

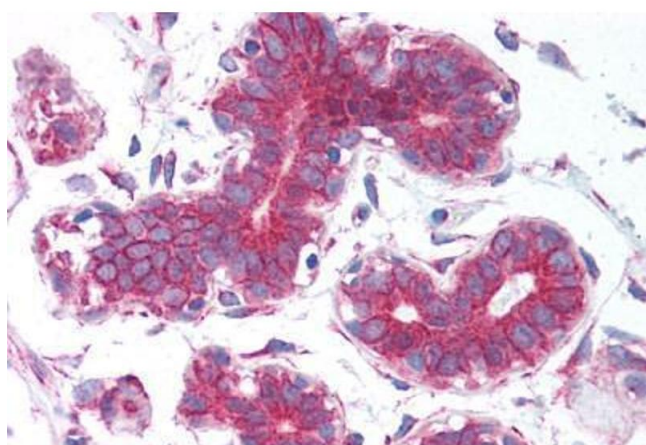
Reconstitution: Sterile ddH2O

Concentration: Lot specific

Handling

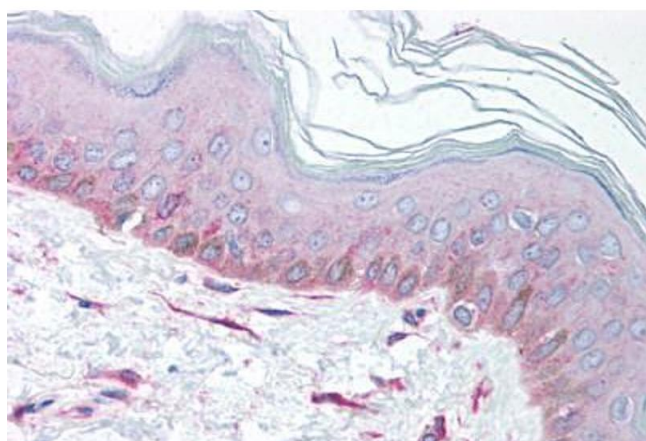
Buffer:	Lyophilized from PBS with 2 % sucrose
Handling Advice:	Avoid repeat freeze-thaw cycles.
Storage:	4 °C, -20 °C
Storage Comment:	Long term: -20°C, the use of 50% glycerol is recommended if storing aliquots in -20°C for long term use (up to 1 year) Short term (less than 1 week): 4°C. Avoid freeze-thaw cycles.

Images



Immunohistochemistry

Image 1. Human Breast (formalin-fixed, paraffin-embedded) stained with EEA1 antibody ABIN214099 at 5 ug/ml followed by biotinylated goat anti-rabbit IgG secondary antibody ABIN481713, alkaline phosphatase-streptavidin and chromogen.



Immunohistochemistry (Paraffin-embedded Sections)

Image 2. Human Skin (formalin-fixed, paraffin-embedded) stained with EEA1 antibody ABIN214099 at 5 ug/ml followed by biotinylated goat anti-rabbit IgG secondary antibody ABIN481713, alkaline phosphatase-streptavidin and chromogen.