

Datasheet for ABIN6736715
anti-PHD1 antibody (AA 58-107)

3 Images

[Go to Product page](#)

Overview

Quantity:	100 µL
Target:	PHD1 (EGLN2)
Binding Specificity:	AA 58-107
Reactivity:	Human, Cow, Guinea Pig
Host:	Rabbit
Clonality:	Polyclonal
Conjugate:	This PHD1 antibody is un-conjugated
Application:	Western Blotting (WB), Immunohistochemistry (IHC), Immunohistochemistry (Paraffin-embedded Sections) (IHC (p))

Product Details

Brand:	IHC-plus™
Immunogen:	Synthetic peptide located between aa58-107 of human EGLN2 (Q96KS0, NP_444274). Percent identity by BLAST analysis: Human, Chimpanzee, Gorilla, Orangutan, Gibbon, Monkey (100%), Galago, Marmoset, Mouse, Rat, Dog, Pig (92%), Elephant, Guinea pig (85%). Type of Immunogen: Synthetic peptide
Isotype:	IgG
Specificity:	Human EGLN2 / PHD1
Predicted Reactivity:	Percent identity by BLAST analysis: Human (100%) Mouse, Rat, Dog, Pig (92%) Guinea pig (85%).

Product Details

Purification: Protein A purified

Target Details

Target: PHD1 (EGLN2)

Alternative Name: EGLN2 / PHD1 ([EGLN2 Products](#))

Background: Name/Gene ID: EGLN2

Synonyms: EGLN2, EIT6, EGL nine (C.elegans) homolog 2, Egl nine homolog 2, HPH-1, HPH-3, Estrogen-induced tag 6, PHD1, HIF-PH1, HIF-prolyl hydroxylase 1, HIFPH1

Gene ID: 112398

NCBI Accession: [NP_444274](#)

UniProt: [Q96KS0](#)

Pathways: [Intracellular Steroid Hormone Receptor Signaling Pathway](#), [Cell RedoxHomeostasis](#)

Application Details

Application Notes: Approved: IHC, IHC-P (5 µg/mL), WB (0.2 - 1 µg/mL)

Usage: Immunohistochemistry: This antibody was validated for use in immunohistochemistry on a panel of 21 formalin-fixed, paraffin-embedded (FFPE) human tissues after heat induced antigen retrieval in pH 6.0 citrate buffer. After incubation with the primary antibody, slides were incubated with biotinylated secondary antibody, followed by alkaline phosphatase-streptavidin and chromogen. The stained slides were evaluated by a pathologist to confirm staining specificity. The optimal working concentration for this antibody was determined to be 5 µg/mL.

Comment: Target Species of Antibody: Human

Restrictions: For Research Use only

Handling

Format: Lyophilized

Reconstitution: After adding water, will consist of PBS buffer with 2 % sucrose

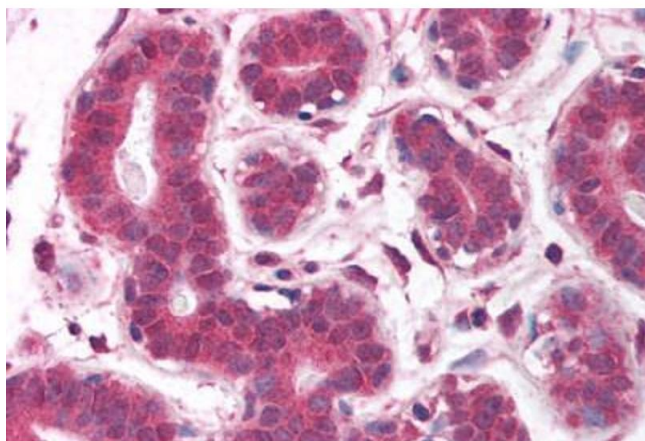
Concentration: Lot specific

Buffer: Lyophilized from PBS with 2 % sucrose

Handling

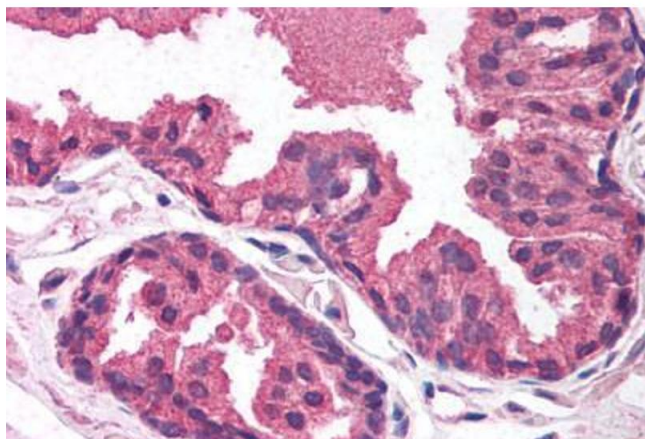
Handling Advice:	Avoid repeat freeze-thaw cycles.
Storage:	4 °C,-20 °C
Storage Comment:	Long term: -20°C, the use of 50% glycerol is recommended if storing aliquots in -20°C for long term use (up to 1 year) Short term (less than 1 week): 4°C. Avoid freeze-thaw cycles.

Images



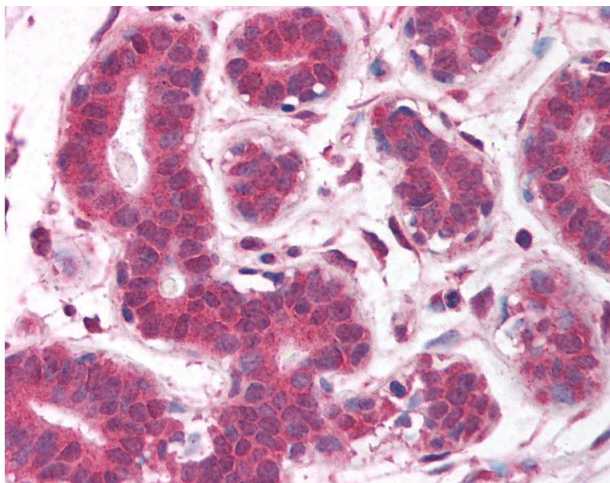
Immunohistochemistry

Image 1. Human Breast (formalin-fixed, paraffin-embedded) stained with EGLN2 antibody ABIN214100 at 5 ug/ml followed by biotinylated goat anti-rabbit IgG secondary antibody ABIN481713, alkaline phosphatase-streptavidin and chromogen.



Immunohistochemistry (Paraffin-embedded Sections)

Image 2. Human Prostate (formalin-fixed, paraffin-embedded) stained with EGLN2 antibody ABIN214100 at 5 ug/ml followed by biotinylated goat anti-rabbit IgG secondary antibody ABIN481713, alkaline phosphatase-streptavidin and chromogen.



Immunohistochemistry

Image 3. Anti-EGLN2 / PHD1 antibody IHC of human breast. Immunohistochemistry of formalin-fixed, paraffin-embedded tissue after heat-induced antigen retrieval. Antibody concentration 5 ug/ml. This image was taken for the unconjugated form of this product. Ot ...